



2024

Grow a **greener** life.



Welcome to our Capi Magazine!

Here we will share our latest collections, our story, and exciting news about our brand. Our team at Capi is proud to introduce our newest collection for this season, which features a touch of gold, but also new models and colours for both indoor and outdoor use. We believe that these pieces will add a touch of elegance to any living space or garden, while also showcasing our commitment to high-quality design.

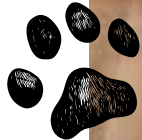
But it's not just about our products, responsibility is at the heart of everything we do at Capi. From using recycled materials in our products to reducing our carbon footprint. We're dedicated to minimizing our impact on the environment. We believe that it's important to create products that not only look great but also have a positive impact on the world around us.

In addition to our story and new collection, we'll also be sharing more about our brand's history and mission. From our beginnings as a small business to our expansion into international markets. We're proud to share our story with you. To grow a greener life. Together!

Thank you for joining us on this journey.

Enjoy reading!

Grow a greener life. Together.



Pictured: Vase Elegant Low Gold KGVGB783

This is Mosey, our happiness manager at the office.

What's inside?



4 The story behind our pots

Collection

- 18 Made in Holland
- 38 Waste Collection NL
- 44 Arc Granite
- 52 Rain barrels
- 56 Biodiversity
- 60 Xala watering cans
- 66 Accessories
- 68 Indoor
- 72 Made With
- 92 Outdoor
- 98 Shelf plans
- 100 Displays & Indoor boxes
- 102 Warranty & service
- 104 Scanbook

Capi Europe BV
Asteriastraat 17-19
5047 RM Tilburg
The Netherlands

T. +31 (0)13 511 5050
E. info@capi-europe.com

capi-europe.com
#capieurope
@ f @ in



SHOW HOW IT'S DONE.

Big stories? We hear those often enough. So let's keep it short.

We are Capi, and we are working for a greener life for everyone;
with everyone.

Sit back and wait for a better world? We don't do that.
We put things in motion.

Whether our products are beautiful?
You decide that for yourself. We'll take care of the rest.
And with the rest we mean products of high and lasting quality:
weatherproof, inspiring and with designs and colours for everyone.

With each of our pots fits a plant, garden, interior, terrace or balcony.

New life grows and blossoms from those pots.
Let's make sure products no longer stand in the way of new life.

Capi pots are for a new generation; new life grows and blooms here.

Grow a **greener life.**
Together.



Scan this QR Code to
check our brand movie.

'Grow a greener life' is more than words in a corporate mission statement. Taking care of the planet and each other is in our roots.



Certified Corporation

Since 2023 Capi Europe is a proud B Corporation, which shows that one of the Company's goals is, to have a significantly positive impact on society and the environment at large.

For more information: www.bcorporation.net



CO2 Neutral Product

The Made in Holland collection is awarded the CO2 Neutral Product label. This can only be obtained as a result of serious environmental efforts.



CO2 Neutral Company

We also received a CO2-neutral certificate for the entire company. We reduce our own CO2 emissions and offset the remaining CO2 emissions.



CU-PEFC-COC-884193

PEFC

The planters in the Made in Holland collection contain wood fibres to give it a stone-look structure. This wood is PEFC certified.



Recyclass

The Waste collection is Recyclass certified, which proves that the material in the pots is actually made from recycled material. In our case 98,6%.

Responsibility.

Where it all started.

Behind the planters, there is a story that begins in 1997. Over 25 years ago, Toine van de Ven started a one-man business in Udenhout, the Netherlands.

Over the years, the product range changed from heavy concrete sculptures and ornaments to heavy Terrazzo planters. The planters were then replaced by lightweight Terrazzo-look planters to make them more user-friendly.

In 2014, this collection was enriched by the sustainable Made in Holland collection, along with the biggest change in Capi's history: the introduction of reshoring.

Toine would have never imagined that delivering heavy sculptures would become the preliminary stage for the Made in Holland products available today. Throughout more than 25 years, Toine has made several big changes, with reshoring being the largest one.

2020 was the year Capi Europe took a next step in the process of sustainability. We received the CO2 Neutral® Product and Company label (by Vinçotte), and we are very proud of it. Every pot from our Made in Holland collection is provided with this quality mark. We are able to do more than just recycling, because this is just a small part of being CO2-neutral.

In 2021 we were able to add a collection made from recycled materials. This collection is made from waste and includes; old fishing nets, used corks and recycled Capi planters.

These days honesty and certifications are very imported to us. We do not only want to show, but also prove, how it's done! Since 2023 we also became a proud B Corporation and we are now part of the Business for good community.

It is not without a reason our mission is: **'Grow a greener life. Together.'**

And this is just the beginning!



Made in Holland Production.

Capi Europe has developed its own CO2 neutral rotation moulding method for the production of Made in Holland pots. We are unique throughout the world in using this particular rotation moulding technique. With this process we save up to 80% of the energy compared to traditional rotation moulding.

01 Raw material

Mixture of polyethylene made with recycled material and PEFC certified wood fibres.



02 Big bags

The raw material hangs in big bags. Each big bag contains its own colour.



03 Filling system

The raw materials are automatically poured into the mould, using a filling system.



04 Own rotation moulding process

The mould is heated in order to melt and liquefy the powder. The machines spin around so the mixture is distributed throughout the mould. The substance is then cooled to produce the flower pot.



05 Orange inside

The two layers of the pot (outer layer and insulating layer) are made in a single cycle.



06 Moulds

Each pot model, texture, and size has its own mould.



07 Day & night

Our Capi robots work 24/7.



08 Mould to belt

As soon as the robot is finished, the pot will automatically be taken to the conveyor belt.



09 Conveyor belt

The conveyor belt takes the pot to the finishing robot.



10 QR code

Our first finishing robot takes the planter off the belt and makes sure the QR code on the bottom is visible to scan. After scanning, the pot will be placed in front of the second finishing robot.



11 Finishing robot

The sharp edges will be removed by our second finishing robot in order to finish the pot.



No waste! 12

The edges coming off the pot will be thrown into our own shredder. This means there is no waste during our whole production process.



13 Back to the roots

The material coming from our shredder goes back to our supplier. There they will be used for new materials.



Capi HQ in Tilburg.

At the end of 2017, Capi moved to a brand new building in Tilburg. The company is now twice as large and occupies an area of over 38.000 m². We have 6.716 solar panels on our roof providing electricity for our headquarters. The energy generated by this amount of solar panels equals electricity for around 1.400 households.

We also have our own 2.000 M² Experience Centre, our own warehouse with more than 20.000 pallet locations and even a 'green' parking lot...

Would you like to visit us? You are always welcome!



Scan this QR Code to check our **production infographic**.



The style of Nicole @nieks_servies.

'About four years ago, I met Capi Europe through their light-weight outdoor flower pots. I love gardening and I also enjoy potted plants, mostly tropical plants. As these need to be moved to a suitable place for them to survive the winter, we often had to carry plants in heavy pots. Since we were introduced to the Capi pots, that's a thing of the past.

Besides being conveniently lightweight, the pots also have beautiful shapes, colours and structures. What makes Capi special to me is that they are very much into sustainability, as we did when renovating our own house. Add to that their innovative products like the pots made of wine corks and fishing nets. Someone else's waste now shines in our homes and gardens through a beautiful pot. By now, we have a sizeable collection of Capi products in our home and garden from outdoor pots, indoor pots, watering cans and an insect hotel.'

Follow Nicole on Instagram: [@nieks_servies](#)

Follow us @capiEurope.

Are you already following us on our socials? We're constantly sharing product news, behind-the-scenes and some interior and garden inspiration.

Follow us on Instagram, Facebook, LinkedIn & Pinterest.



Rib Vase Elegant Deluxe Ivory.

This Ivory Rib pot is my favourite pot because its height and shape make it an instant eye-catcher in your home or garden. The advantage is that the pots can be used both indoor and outdoor and have a unique isolation layer.



Indoor pots Groove.

A beautiful range of indoor pots. I chose the colour gold with the black grooves, which gives the pots a fancy look. A nice set of different sizes and shapes of the groove pots together gives a cosy playful effect.



Insect hotel/bird house.

Beautiful design and it's fun to take good care of our nature and the animals. We had a little bird visiting us in our garden for the first time last year!



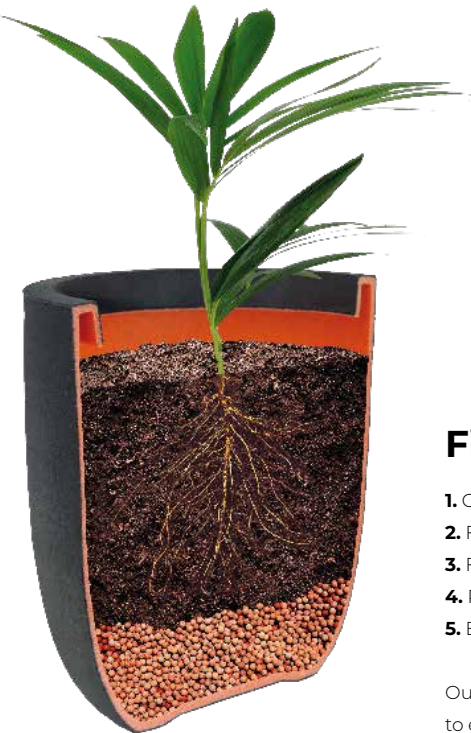
[capi-europe.com](#)
#capiEurope
@ f @ in

The orange interior.

Our well-known Made in Holland pots all feature an orange interior. This is for several reasons. Read why here!

Insulating layer for plants.

The orange inside is actually a second layer that acts as an insulation layer. It protects the plant's roots against frost in winter and heat in summer.



Filling tip.

- 1. Choose an impressive plant.
- 2. Fill the planter for 1/3 with hydro grains.
- 3. Fill the planter for 2/3 with soil.
- 4. Put your impressive plant in the soil.
- 5. Enjoy the growth.

Outdoor use? Please drill a 25mm hole to ensure water drainage and place our drainage cap on top (see page 67).



Made in Holland.

The pots with the orange interior are all made in Tilburg (NL). Orange is of course a symbol of the Netherlands, look for instance at the shirts of the Dutch national team. Worldwide, the colour orange represents the Netherlands.



The symbol for reshoring.

For various reasons, we brought production back to the Netherlands 10 years ago. A difficult word for this is reshoring. To recognize the Dutch pots, they were therefore given an orange interior.

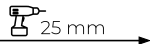


Extra strength.

The orange layer also makes the pot extra strong. And that, in turn, makes it fracture-resistant.



Outdoor



For outdoor use, please drill a 25mm hole to ensure water drainage.



Indoor

100% watertight

The planters are perfect for indoor use, because they are 100% watertight.





Made in Holland
COLLECTION.



Made in Holland collection.

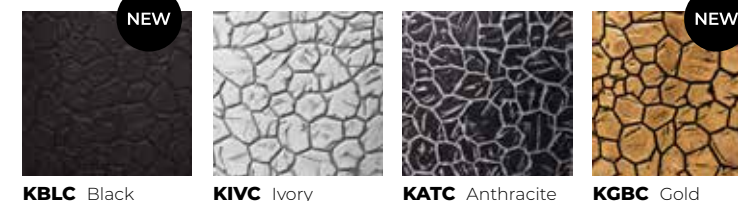
Nature **Groove** NL



Nature **Rib** NL



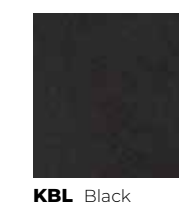
Nature **Clay** NL



Nature **Row** NL



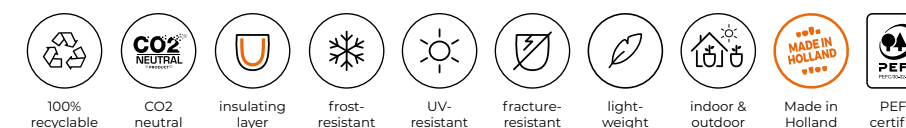
Urban **Smooth** NL



Nature **Waste** NL



LIFETIME WARRANTY



Pictured: Planter Ball Clay Gold **KCBC933**

NEW

The golden touch.

Introducing our new collection of golden pots, expanding our popular Groove **NL**, Rib **NL** and Clay **NL** designs. These pots have been designed to add a touch of glamour and elegance to your interior, making them true eye-catchers that are sure to impress.

The addition of the golden colour to our Clay, Rib, and Groove pots brings a sense of luxury to any room. The shimmering golden finish adds a warm and radiant glow. Whether you have a modern or traditional interior, these golden pots effortlessly blend in.

But these pots aren't just limited to indoor use. By drilling a hole in the bottom, they can also become a perfect addition to your outdoor area. The high quality of the pots makes them perfect for various weather conditions, so you can enjoy their beauty both indoor and outdoor.

The pots can be used for a wide variety of plants, from vibrant flowers

to lush greenery. The contrast between the golden surface and the natural colours of the plants creates a striking combination, making your plants truly stand out.

Just like the rest of our Made in Holland collection these golden pots are CO2 neutral produced and come with a lifetime warranty. We believe in creating products that not only enhance your living spaces but also contribute to a greener future.

You can find all models in gold on the next page.

Grow a greener life. Together.

Available in:



KBGR Rib Gold

KGVGB Groove Gold

KBCB Clay Gold

LIFETIME WARRANTY

NEW



Get inspired by these stunning **golden pots**. Their elegant design makes them perfect for adding a touch of glamour to any space.

Made in Holland
Gold NL

NEW



Vase Cylinder
Groove NL

882	35 x 38	ø 29
883	44 x 46	ø 35



Vase Ball
Rib NL

270	40 x 32	ø 24
271	62 x 48	ø 40



Planter Ball
Groove NL

932	35 x 34	ø 29
933	43 x 41	ø 35



Planter Ball
Rib NL

932	35 x 34	ø 29
933	43 x 41	ø 35
935	55 x 53	ø 46



Vase Elegant Low
Groove NL

782	34 x 46	ø 27
783	46 x 58	ø 38



Vase Elegant Low
Rib NL

782	34 x 46	ø 27
783	46 x 58	ø 38



Planter Ball
Clay NL

932	35 x 34	ø 29
933	43 x 41	ø 35



Vase Tapered Round
Rib NL

362	42 x 38	ø 31
------------	---------	------



Vase Elegant Deluxe
Clay NL

1138	50 x 72	ø 31
1132	56 x 85	ø 38



Vase Elegant Deluxe
Rib NL

1131	38 x 58	ø 27
1138	51 x 72	ø 31
1132	55 x 85	ø 38

 **LIFETIME WARRANTY**



CO2 neutral Made in Holland.

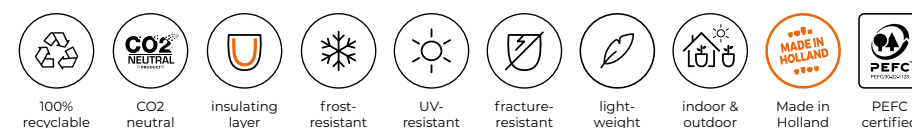
Nature as a source of inspiration. With its green leaves and shades, many textures and energy. Our Made in Holland collection is based on these elements. Each texture forms a unique, coherent flow within our collection.

The Capi Made in Holland collection is produced completely CO2 neutral in our factory in Tilburg. Because of our own production process, we are able to manufacture high quality flower pots, which are 100% recyclable and come with a lifetime warranty.

The orange interior of these pots is intended to represent their place of origin and has become a recognisable feature of our brand.

The orange layer also provides the planters with insulation, offering the roots of your plants extra protection against both heat and cold. This extra layer provides extra firmness to the planter, which makes it fracture-resistant.

Check out page 16-17 to read more about the orange interior. You can also find some useful filling tips for our planters on these pages!



**LIFETIME
WARRANTY**



The pots have a robust look, but they are extremely **lightweight** which makes them easy in use.



Nature Groove NL

Our Groove is, just like the rest of these collections, CO2 neutrally produced in the Netherlands. And of course they have our signature orange inside which is also an insulating layer, offering your plants extra protection against both heat and cold. Available in 4 colours.



Vase Cylinder Groove NL		
882	35 x 38	ø 29
883	44 x 46	ø 35



Planter Ball Groove NL		
932	35 x 34	ø 29
933	43 x 41	ø 35



Vase Elegant Low Groove NL		
782	34 x 46	ø 27
783	46 x 58	ø 38

Available in:





Indoor & outdoor: The planters are 100% watertight and therefore perfect for indoor use. For outdoor use, you only have to drill a drainage hole of 25mm.

Pictured: Vase Ball Rib Ivory KOFI270

Nature Rib NL

Our bestselling Rib is one of our first textures. The natural look of the texture combined with the 4 colours make these planters timeless in every home or garden. This fits the lifetime warranty they have which is intended to show their quality, and their long lifespan. With its 7 models there is a planter for everyone.



Also available in gold.

Planter Ball Rib NL

932	35 x 34	ø 29
933	43 x 41	ø 35
935	55 x 53	ø 46



Also available in gold.

Vase Elegant Deluxe Rib NL

1131	38 x 58	ø 27
1138	51 x 72	ø 31
1132	55 x 85	ø 38



Also available in gold.

Vase Tapered Round Rib NL

362	42 x 38	ø 31
------------	---------	------



Planter Square Rib NL

902	30 x 30 x 30	ø 24
903	40 x 40 x 40	ø 32
904	50 x 50 x 50	ø 42



Also available in gold.

Vase Ball Rib NL

270	40 x 32	ø 24
271	62 x 48	ø 40



Planter Rectangle Rib NL

963	73 x 39 x 32	ø 65 x 31
------------	--------------	-----------

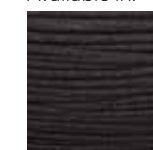


Also available in gold.

Vase Elegant Low Rib NL

782	34 x 46	ø 27
783	46 x 58	ø 38

Available in:



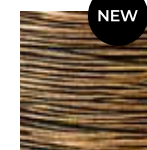
KBLR Black



KOFI Ivory



KOFZ Anthracite



KBGR Gold

NEW

LIFETIME WARRANTY



Our Made in Holland pots contain wood fibres to give the planters a natural stone look. These wood fibres are **PEFC-certified**.

Nature Clay NL

Discover the trendy Clay collection, now featuring the new option in gold and a cool black colour. Already available in ivory and anthracite. These pots have a chic and contemporary design. With these 4 colours, you can easily upgrade your interior or garden.



Planter Ball
Clay NL

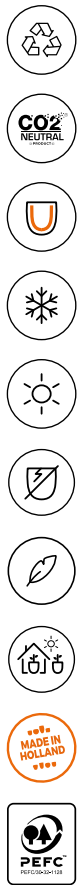
932	35 x 34	ø 29
933	43 x 41	ø 35



Vase Elegant Deluxe
Clay NL

1138	50 x 72	ø 31
1132	56 x 85	ø 38





The planters of our Made in Holland collection come with a **lifetime warranty**, because of its high quality and long lifespan.



Nature Row NL

Experience the elegance of the Capi Row collection, featuring a lightweight yet natural stone look. Recognizable by its distinctive horizontal lines, these pots have the perfect balance between functionality and design. Enhance your space with the timeless appeal of the Row collection.



Vase Elegant Low
Row NL

782	34 x 47	ø 27
783	46 x 58	ø 38



Planter Ball
Row NL

932	35 x 34	ø 29
933	43 x 41	ø 35
935	54 x 52	ø 46



Planter Square
Row NL

902	30 x 30 x 30	ø 24
903	40 x 40 x 40	ø 32

Available in:



KBLRO Black



KRWI Ivory



KRWZ Anthracite



Scan this QR Code to check our **brand movie**.



Pictured: Planter Ball Smooth KBL932 & KBL933

Urban Smooth NL

Our Smooth collection is the design our Made in Holland collection began with. Their recognisable orange interior shows their origin, but is also an insulating layer that protects the plants they hold from heat in summer and cold in winter. Due to this extra layer the pots are extra sturdy as well, which makes them fracture-resistant.



Vase Elegant Low
Smooth NL

781	26 x 36	ø 20
782	36 x 48	ø 27



Planter Square
Smooth NL

902	30 x 30 x 30	ø 24
903	40 x 40 x 40	ø 32
904	50 x 50 x 50	ø 42



Planter Ball
Smooth NL

932	35 x 34	ø 29
933	43 x 41	ø 35
935	54 x 52	ø 46

Tip: Our Planter Ball 43 x 41 cm fits perfectly on this pillar.



Planter Rectangle
Smooth NL

952	36 x 36 x 79	ø 26
------------	--------------	------

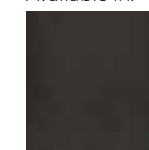


Pillar Rectangle
Smooth NL

243	36 x 36 x 79
------------	--------------



Available in:



KBL Black



98%

RECYCLED
PLASTIC

Certified by RecyClass

This collection is for 98.6%
made from recycled materials.

Pictured: Waste Planter Ball Rib Beige KTBR932 & KTBR933

This collection takes action & responsibility.

For this collection, we turn fishing nets, combined with used old corks and recycled Capi planters, into high quality products with a functional design. Just like the rest of our Made in Holland collections these pots are made CO2 neutrally in our factory in Holland and come with a lifetime warranty. They are available in a dark grey colour and a bright beige colour. Both suitable for indoor and outdoor use.

This collection takes action and responsibility by taking on one of the biggest waste problems today; preventing fishing nets to be thrown into the ocean. The fishing nets in our Waste collection are collected from harbours and larger fisheries to prevent them from ending up in landfill or in the ocean. The company Plastix from Denmark recycles this maritime plastic into raw material that we use for this collection. The nets mainly come from Europe, but they are also collected in other parts of the world.

For the cork we work with the French company Vinventions, that makes synthetic corks and screwcaps for wine bottles. They have a cork recycling program and the used corks are purchased by our supplier and transformed into raw material. The proceeds from this go to associations such as cancer funds.

The old Capi planters come from our own factory. When finishing our Made in Holland pots we remove the sharp edges. These orange edges go through our shredder and are then returned to our supplier, where

they are again transformed into raw material (you can read this full process on page 10-12). The combination of all previously mentioned raw materials is used for our waste collection.

For this collection we skipped our iconic orange interior of the planters to keep the recycled look on the inside as well. This makes the story even stronger because the planters look recycled all over.

This collection is 98,6% Recyclclass certified, showing that this collection actually consists of recycled materials. In our case by 98,6%! The certification focuses on the traceability of recycled plastics within a process and the verification of a given percentage of recycled plastic content in products. After all, does a product actually consist of what it says? Capi wanted to proof that what we say about the recycled materials in this collection is true. That's where we called in Recyclclass. What about the other 1,4%? These are additives to bind the materials and to give the pots the consistent colour they have.

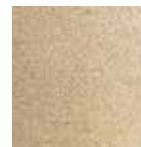
Available in:



KTG Terrazzo grey



KTGR Terrazzo grey

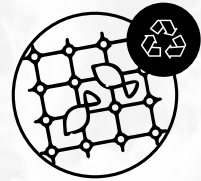


KTB Terrazzo beige



KTBR Terrazzo beige

 LIFETIME
WARRANTY

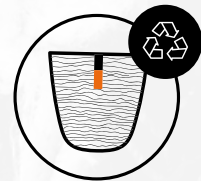
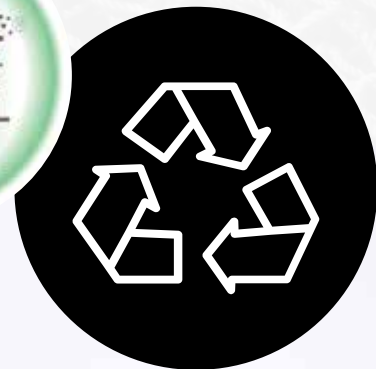


USED FISHING NETS

The fishing nets in our Waste collection are collected from harbours and larger fisheries to prevent them from ending up in landfill or in the ocean. The company Plastix from Denmark recycles this maritime plastic into raw material that we use for this collection. The nets mainly come from Europe, but they are also collected in other parts of the world.



Scan for more information.

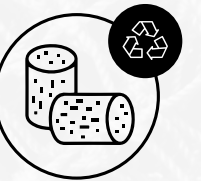


RECYCLED CAPI POTS

When finishing our Made in Holland pots we remove the sharp edges. These orange edges go through our shredder and are then returned to our supplier, where they are again transformed into raw material. The combination of all these raw materials is used for our waste collection.



Scan for more information.



USED CORKS

The cork in our Waste collection comes from the French company Vinventions, that makes synthetic corks and screwcaps for wine bottles. They have a cork recycling program and the used corks are purchased by our supplier and transformed into raw material. The proceeds from this go to associations such as cancer funds.



Scan for more information.



- 100% recyclable
- CO2 neutral
- frost-resistant
- UV-resistant
- fracture-resistant
- light-weight
- indoor & outdoor
- Made in Holland
- 98% RECYCLED PLASTIC



98%

RECYCLED PLASTIC

Certified by RecyClass

This collection is for 98,6% made from recycled materials.

We received the **RecyClass certificate** for the Waste collection. Unfortunately, the pots cannot consist of 100% recycled materials because of extra additives such as dye and starches.



Nature NL Waste

This collection is available in two stunning textures: Rib and Smooth. The Rib texture adds a contemporary touch with its sleek lines, while the Smooth texture offers a more elegant and refined look. Available in two colours: grey and beige.



Planter Ball
Rib NL

932	35 x 34	ø 29
933	43 x 41	ø 35



Vase Elegant Low
Rib NL

782	34 x 46	ø 27
783	46 x 58	ø 38



Planter Ball
Smooth NL

932	35 x 34	ø 29
933	43 x 41	ø 35

Available in:

KTG Terrazzo grey

KTGR Terrazzo grey

KTB Terrazzo beige

KTBR Terrazzo beige

LIFETIME WARRANTY



Arc Granite
COLLECTION.

Elevate your outdoor spaces.

Introducing the inspiring Arc Granite collection, a series of eye-catching models with sizes ranging from XS to XXL (up to 177cm). This collection is perfect for projects, entrances, and any outdoor area where you desire a touch of brilliance.

The Arc Granite collection is inspired by contemporary architecture. This collection is a combination of nature and extreme luxury. A playful collection which comes in XS up to XL sizes (up to 177cm!) that can be used indoor & outdoor. Perfect for big venues or as a real eyecatcher in your home and/or garden.

The planters are 100% watertight and therefore suitable for indoor use. Would you like to use the planters outdoor? You only have to drill some drainage holes of 25mm in the bottom to make sure the water can find its way out of the planter. Because of the smooth material the planters are easy to clean, which makes them usable for outdoor in all weather conditions. You can even use these planters as a small pond.

The rich texture and natural grain of the granite finish create a striking

contrast against the lush greenery, adding depth and character to your outdoor spaces. Whether you're looking to create a stunning entrance or enhance a large-scale project, the Arc Granite collection offers a wide range for several spaces.

Crafted with durability in mind, these planters are made with recycled materials and built to withstand various weather conditions. The planters have a second layer on the inside, which provides as a protective insulating layer. As a result, the pots are both heat and frost resistant, and the roots of the plants are better protected. Their high-quality ensures a long lifespan, making them a reliable choice for indoor & outdoor.

Available in four colours: Anthracite, Light Grey, Black (new) and White (new).

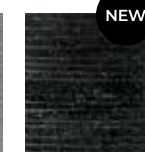
Available in:



NATS Anthracite



NIVS Light Grey



NBLS Black



NWHS White

 **LIFETIME WARRANTY**

This collection contains **XXL** planters up to 177cm wide!

Pictured: Vase Ball Anthracite NATS8053, NATS8054 & NATS8055



These Arc Granite pots are made with recycled materials. The black colour is even made from 100% recycled material.

- NEW

insulating layer
- 100% recyclable
- indoor & outdoor
- frost & UV-resistant
- fracture-resistant
- light-weight
- easy to clean

Arc Granite

These planters add a natural and luxury look in every home or garden. The planters are made with recycled materials and are 100% recyclable. Besides the regular sizes these planter also come in XXL sizes, but still they are extremely lightweight and fracture-resistant. Therefore easy to use and perfect for big venues or as an eyecatcher in your home and/or garden. Available in 4 colours.



Planter Ball Granite		
8031	34 x 25	15 L
8032	48 x 35	38 L
8033	60 x 48	94 L
8034	75 x 60	180 L
8036	114 x 90	650 L XL
8037	156 x 90	1.130 L XL



Vase Ball Granite		
8051	67 x 45	120 L
8052	88 x 60	290 L
8053	108 x 75	550 L XL
8054	132 x 90	950 L XL
8055	177 x 120	2.300 L XL



Vase Elegant Granite		
8071	43 x 50	55 L
8072	63 x 75	184 L
8073	85 x 100	450 L XL



Bowl Low Granite		
8081	61 x 25	50 L
8082	92 x 36	157 L
8083	122 x 46	365 L XL
8084	153 x 56	700 L XL

Tip: Use the bowls as small ponds by adding a pond pump.



Planter Rectangle Granite		
8061	60 x 35 x 40	55 L
8062	90 x 35 x 40	85 L

LIFETIME WARRANTY

Available in:

NATS Anthracite

NIVS Light Grey

NEW

NBLS Black

NEW

NWHS White



Capi
ACCESSORIES.

Catch rainwater when it falls.

The climate is changing and the weather is becoming more extreme. There are more days with heavy and prolonged rainfall. And at the same time, there are more periods of sustained heat and drought. This has many adverse consequences. To help maintain a water friendly garden, Capi has developed several design rain barrels.

In today's world, where climate change has led to erratic weather patterns and increasing heat, the problem of rainwater runoff and heat build-up in urban areas has become a significant issue. Excessive rainwater runoff not only contributes to flooding but also exacerbates the urban heat island effect, making outdoor spaces uncomfortable and less sustainable.

Fortunately, Capi's rain barrels offer an effective solution to this problem. By collecting rainwater from rooftops, this precious resource can be stored and utilized for your garden's irrigation needs. You can nourish your plants with this natural resource, reducing the need for tap water consumption. This not only saves money on water bills but also minimizes the strain on local water supplies.

The Capi rain barrels are available in a variety of sizes, ensuring that you can find the perfect fit for your needs. Whether you have a small garden or a larger outdoor space, there's a rain barrel that suits your requirements. Additionally, the two different textures available allow you to choose a design that complements your aesthetic preferences and seamlessly integrates into your garden.

All rain barrels come with a planter on top. This way you can also add some extra green to your garden. Fill the planter on top with some flowers that attract birds, bees or butterflies to boost the biodiversity in your garden.

Did you know... Rain water is better for your plants than tap water, because it contains less chalk!

NEW

Warranty

Just as our Made in Holland collection, our rain barrels come with a **lifetime warranty**. The barrels are very sturdy, weather resistant and can hold a lot of water. The accessories of the rain barrel come with a 5 year warranty and can be replaced easily without moving the rain barrel.

LIFETIME WARRANTY **5 YEAR WARRANTY**

Available in two textures:



Rib Black



Groove Black

NEW



Our rain barrels come with a **planter** on top.



All our rain barrels are provided with a **luxurious metal tap** including garden hose connection!



Rain barrels

Introducing the Capi rain barrels with two captivating textures: Rib and Groove. The new Groove texture adds a unique touch, featuring stylish grooves that create a visually appealing and contemporary look. The Rib texture remains very classic and has a slightly more natural look. Both textures are available in different models.



Rain barrel **Rib**
130 L

1132 56 x 56 x 123

RKBLR1132 Black



Rain barrel **Rib**
250 L

1183 48 x 102 x 92

RKBLR1183 Black



Rain barrel **Rib**
400 L

1193 53 x 87 x 139

RKBLR1193 Black



Rain barrel **Groove**
210 L

1190 66 x 66 x 110

RGVBL1190 Black



Rain barrel **Groove**
330 L

2000 66 x 66 x 140

RGVBL2000 Black

Warranty

Just as our Made in Holland collection, our rain barrels come with a **lifetime warranty**. The barrels are very sturdy, weather resistant and can hold a lot of water. The accessories of the rain barrel come with a 5 year warranty and can be replaced easily without moving the rain barrel.

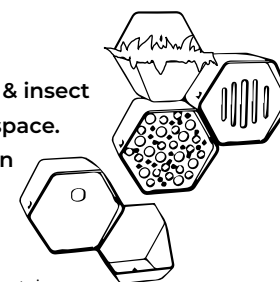




Pictured: Oval Bird House 2 - Brown AOBIB002

Contribute to biodiversity.

Discover the Biodiversity Collection by Capi Europe, a range of bird- & insect houses designed to support biodiversity in your garden or outdoor space. Available in two shapes, oval and hive, and two earthy colours, brown and anthracite. These houses seamlessly blend into natural surroundings while providing a safe haven for various species.



The gardens all around the world are consisting more and more of stone. And that's a shame, because insects and birds have less space to do what they are made for. Because a green lifestyle is very important for a lot of people and to help the animals, Capi Europe has designed the biodiversity collection.

The Biodiversity Collection features a variety of houses, including birdhouses, butterfly houses, and bee hotels, each tailored to attract specific creatures. From providing nesting sites for birds to creating habitats for butterflies and essential pollinators like bees, these houses play a vital role in supporting biodiversity.

The oval models have a natural shape so they fit in every garden. The Hive

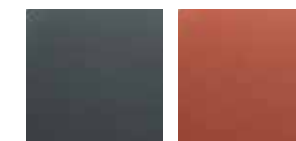
models have a modern geometric design, including a **click & combine** clip on the back. With this clip you can easily click several bird- or insecthouses from this collection together. This way you can create a full biodiversity wall or some bird villa's in your garden!

This collection is made from recycled material and doesn't have a packing, but only an information sticker. This way we provide all the information needed, but we save on material that we throw away after purchase. Both the Hive and the Oval bird- and insecthouses can stand on their own in the shelves for a full biodiversity shelf plan.

Grow a greener life. Together.

5YEAR
WARRANTY

Available in two shapes
and two colours:



A Anthracite

B Brown



Click & combine

Each Hive model comes with a **clip on the back**.
With this clip you can easily click several bird- or insecthouses from this collection together. This way you can create a full biodiversity wall or some bird villa's in your garden! Read more about this via the **QR code** below.



The bird houses attracts different bird species, for example:

Bird house 1

Blue Tit *
Pied Flycatcher
Crested Tit
Great Tit

Nuthatch *
House Sparrow *
Tree Sparrow

Bird house 2

Common redstart
Pied flycatcher
Starling
Tree sparrow *



* This bird eats the oak processionary caterpillar.

Based on European bird species.



Scan this QR Code for more info about our biodiversity collection.

Biodiversity **Oval & Hive**

The Capi Europe Biodiversity collection is available in two different shapes (Oval & Hive) and two beautiful colours: Anthracite & Brown. This way they will fit in every garden. With this collection you will be able to make a contribution to nature.

This collection is made from 100% recycled materials.



**Bird House 1
Oval**

24 x 19 x 23

AOBIA001

Anthracite

AOBIB001

Brown



**Bee Hotel
Oval**

24 x 19 x 23

AOBEA001

Anthracite

AOBEB001

Brown



**Bird House 2
Oval**

24 x 19 x 23

AOBIA002

Anthracite

AOBIB002

Brown



**Butterfly Hotel
Oval**

24 x 19 x 23

AOBUA001

Anthracite

AOBUB001

Brown



**Bird House 1
Hive**

19 x 23 x 20

AHBIA001

Anthracite

AHBIB001

Brown



**Bee Hotel
Hive**

19 x 23 x 20

AHBEA001

Anthracite

AHBEB001

Brown



**Bird House 2
Hive**

19 x 23 x 20

AHBIA002

Anthracite

AHBIB002

Brown



**Butterfly Hotel
Hive**

19 x 23 x 20

AHBUA001

Anthracite

AHBUB001

Brown



**Planter
Hive**

19 x 23 x 20

AHPLA001

Anthracite

AHPLB001

Brown



**Water Dish
Hive**

19 x 23 x 20

AHWD A001

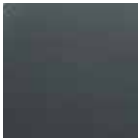
Anthracite

AHWD B001

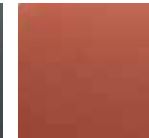
Brown

Also perfect for indoor use.

Available in:



A Anthracite



B Brown

5 YEAR
WARRANTY



Level up your watering game.

Discover the versatile and stylish Xala watering items, the perfect companions for all your gardening needs. With a range of different watering cans and a convenient plant sprayer, these items make watering your plants a breeze.

Whether you're tending to your indoor plants or maintaining your outdoor garden, Xala offers a variety of options to suit your preferences. There is a watering solution for every task.

Functional design watering cans for home and garden in trendy colours. These watering cans are also suitable as a design object for your home and garden. Tip: Use the watering can as a vase and add some nice flowers.

The Chai plant sprayer is a handy tool for misting delicate plants or providing a gentle spray to keep leaves hydrated. Its compact size and easy-to-use design make it a must-have accessory for plant lovers.

Choose from an array of colours to match your style and create a visually appealing garden oasis.



10 YEAR
WARRANTY



Xala Watering

Functional design watering cans for home and garden.
In addition to the functional aspect, these watering cans are also suitable as a design object in your home or garden.

The Xala items are available in unique and iconic designs in different colours.



Watering can
Lungo 12L

46 x 26 x 43

- | | | | |
|---------|------------|---------|------------|
| X110013 | Black | X110016 | Light grey |
| X110011 | Old green | X110022 | Copper |
| X110024 | Slate grey | X110023 | Olive grey |



Watering can
Lungo 8L

40 x 22 x 37

- | | | | |
|---------|------------|---------|------------|
| X110203 | Black | X110206 | Light grey |
| X110201 | Old green | X110222 | Copper |
| X110224 | Slate grey | X110223 | Olive grey |

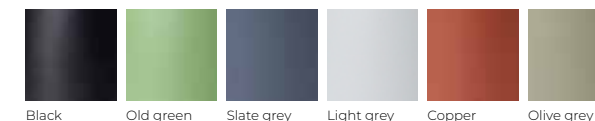


Plant sprayer
Chai 0,5L

10 x 10 x 20

- | | | | |
|---------|------------|---------|------------|
| X310403 | Black | X310406 | Light grey |
| X310401 | Old green | X310422 | Copper |
| X310424 | Slate grey | X310423 | Olive grey |

Available in:



10 YEAR
WARRANTY

Pictured: Xala Lungo 8L Light Grey **X110206**



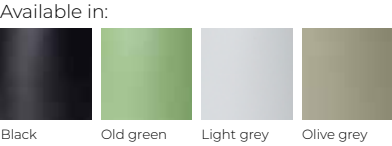
Xala

Watering cans

Functional and iconic watering cans in small sizes, so you can water your indoor plants easily. Every shape has its own story. Remarkable models that combine convenience and design in a luxurious way. Available in 4 natural colours.

	<p>Watering can Doppio Groove 2L 28 x 16 x 17</p> <p>X111503 Black X111501 Old green X111506 Light grey X111523 Olive grey</p>		<p>Watering can Kappu 2L 29 x 12 x 16</p> <p>X110803 Black X110801 Old green X110806 Light grey X110823 Olive grey</p>
	<p>Watering can Doppio Smooth 2L 28 x 16 x 17</p> <p>X110503 Black X110501 Old green X110506 Light grey X110523 Olive grey</p>		<p>Watering can Matcha 4L 44 x 11 x 29</p> <p>X110703 Black X110701 Old green X110706 Light grey X110723 Olive grey</p>
	<p>Watering can Chai 10L 42 x 26 x 37</p> <p>X110403 Black X110406 Light grey X110401 Old green X110423 Olive Grey</p>		

10YEAR
WARRANTY






Due to the wheels under the trolleys, they are movable in all directions.




Place the drainage cap over the (drilled) drainage hole on the **inside** of your planter. This prevents the hydro grains to fall out of the drainage hole.

Capi Accessories


The Capi accessories collection has been added to increase the ease-of-use of our products. Various products that will help consumers embrace the green lifestyle, in a pleasant and easy way.




Design Trolley
Round
ATA001 Round 30 x 30
ATA002 Round 40 x 40




Design Trolley
Square
ATSA002 Square 40 x 40




Drainage Cap
Anthracite
AGJ001 12 x 12 x 6





Pot pads
Outdoor
APO001 Outdoor 5 x 1,5




Plantcover
Available in 2 colours
001 Small 75 x 150
002 Medium 100 x 200
003 Large 150 x 250



Pot insert
for indoor
IPT100 16 x 20 3 L **IPT106** 32 x 28 15 L
IPT101 21 x 20 4 L **IPT107** 34 x 30 20 L
IPT103 24 x 20 5 L **IPT108** 38 x 24 18 L
IPT104 27 x 21 8 L **IPT109** 41 x 26 23 L
IPT105 29 x 35 13 L **IPT110** 44 x 30 30 L
 Made with 100% recycled materials.



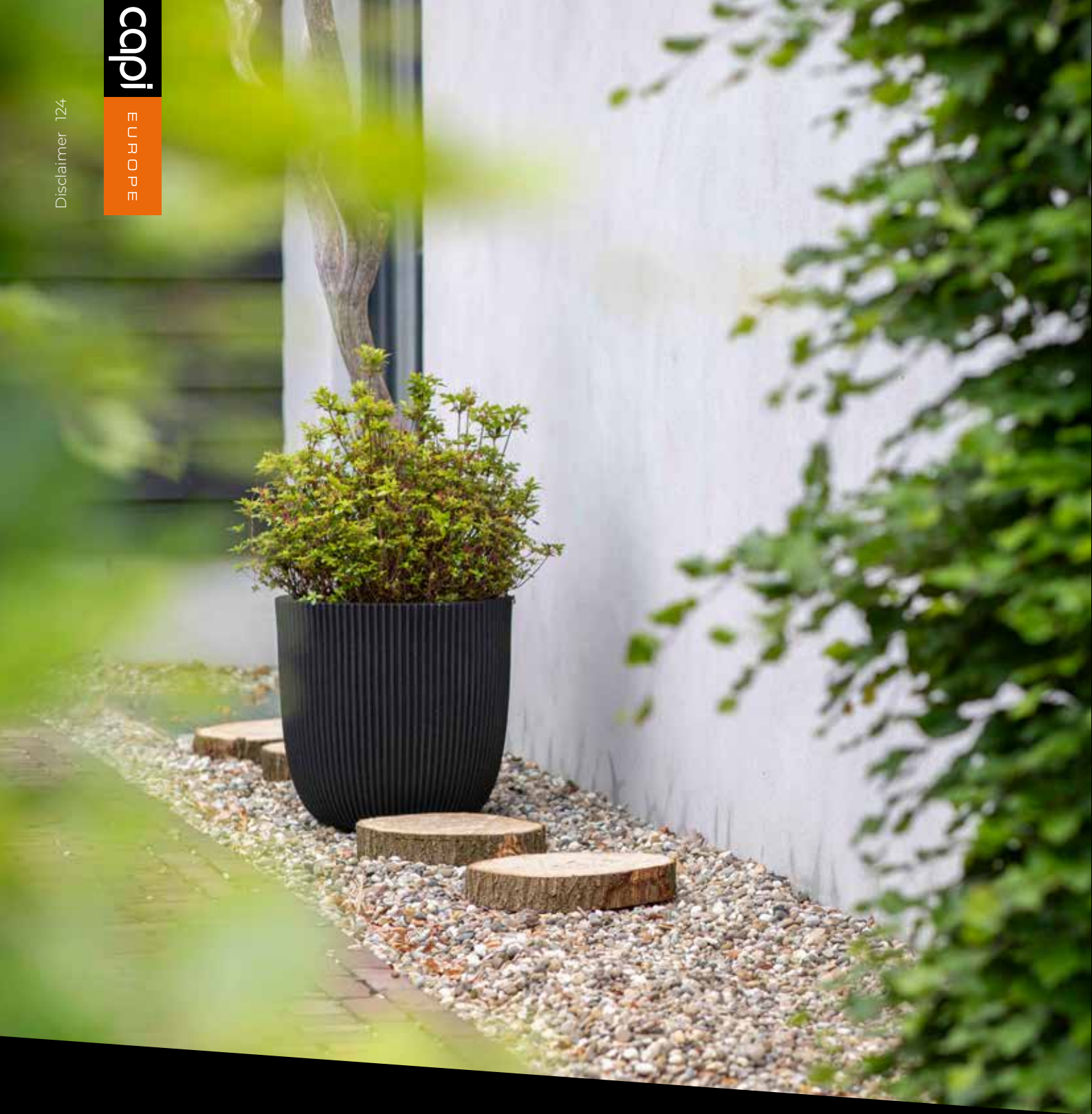
Flower mix
Seeds
AFM001 For birds
AFM002 For bees
These flower mixes will be delivered in a presentation display (130 pieces).



Hydrocan
1 Liter
AHC001 10 x 7 x 25 1 L

Grow a greener life.

5 YEAR WARRANTY



Disclaimer.

EN All sizes specified in this product catalogue are in cm and shown as length x width x height. Dimensions of round products are given as width x height. Our products are handmade, the size and colour are approximate and may vary slightly. All of the information in this product catalogue was correct at the time it went to press. Capi Europe reserves the right to modify the product details without notice. © Copyright 2022 Capi Europe B.V.

DE Alle Maße sind in cm in Länge x Breite x Höhe angegeben. Abmessungen runder Produkte sind Breite x Höhe angegeben. Unsere Produkte werden manuell hergestellt, Farbe und Format dienen lediglich zur Veranschaulichung und können leicht variieren. Alle Informationen in dieser Broschüre sind zum Zeitpunkt dieses Drucks korrekt. Capi Europe behält sich das Recht vor Produktinformationen ohne vorherige Ankündigung anzupassen. © Copyright 2022 Capi Europe B.V.

NL Alle maten zijn in cm in lengte x breedte x hoogte. De maatvoering van de ronde producten zijn op het breedste punt pot x hoogte. Onze producten zijn handgemaakt, kleur en formaat zijn bij benadering en kunnen licht variëren. Alle informatie in deze brochure is correct ten tijde van deze druk. Capi Europe behoudt het recht zonder verwittiging details van de producten aan te passen. © Copyright 2022 Capi Europe B.V.

FR Toutes les dimensions sont exprimées en cm, pour longueur x largeur x hauteur. Les dimensions des produits ronds indiquent le largeur x la hauteur. Nos produits sont de facture manuelle, la couleur et le format sont définis approximativement et peuvent alors varier légèrement. Toutes les informations que fournit cette brochure sont correctes à la date de son impression. Capi Europe se réserve le droit de modifier des détails des produits sans annonce préalable. © Copyright 2022 Capi Europe B.V.

Cheers.
Tschüss.
Salut.
Houdoe.

capi

EUROPE

Grow a **greener** life.