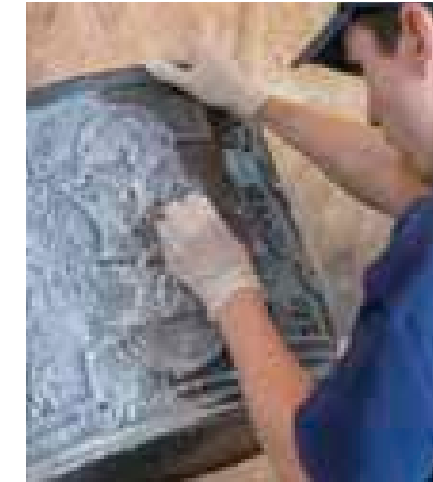
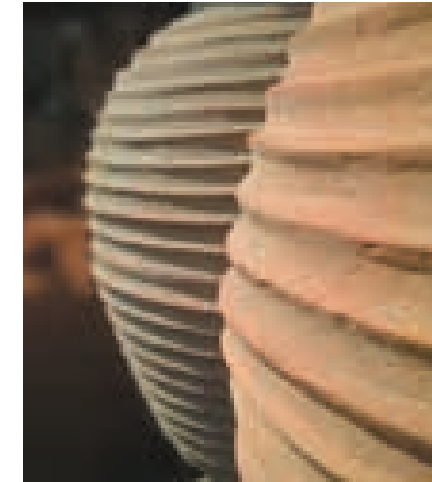




CAPITAL
GARDEN PRODUCTS

Capital Garden Products

For over forty years our skilled designers and craftsmen have produced decorative fiberglass plant containers that even the keenest eye cannot distinguish from the original materials.



Why fiberglass and resin?

A wonderfully tough and versatile material, fiberglass is maintenance-free and light in weight. Completely frostproof and non corrosive, it is superior to terracotta, stone, wood and some metals. Impervious to all weather conditions, our planters have been exported to gardens worldwide ranging from the Kingdom of Bahrain to the skyline of New York.

Authentic finishes

Our production techniques are being continually researched and developed to produce new finishes to replicate a multitude of materials that are indistinguishable from the real thing. The extensive list of finishes includes antique brass, beaten copper, old penny bronze, terracotta, lead, aluminium, stone, concrete, limed wood, zinc and rust.

The art of deception

Our skilled design and manufacturing team imitate and innovate products ranging from small lead planters to vast modern aluminium troughs. Our manufacturing technique allows the rustic finishes to age over time and gloss colors to retain their lustre. A Capital Garden Products planter is impossible to tell from its counterpart until you try to lift it!



The real thing

To create an authentic reproduction, all of our masters are made in their original materials - clay, lead, wood, zinc or other metals. On occasion we have supplied these masters to the market. If you are searching for the real thing, please contact us and we will be happy to discuss your project.

Custom design and sizes

Half of our work is custom made or made to measure, from designing entire gardens, balconies or roof terraces to one off stand alone pieces. We are happy to work from detailed plans to interpretations of a dream.

Get in touch

Customers' queries are always welcome and dealt with as quickly as possible. Our website has news of new developments, permanent showrooms and forthcoming exhibitions around the world.

For further information or advice please
CALL 908-823-4378
VISIT www.capital-garden.com

The Handmade Manufacturing Process

All of our products are handmade in our own workshops around the world.

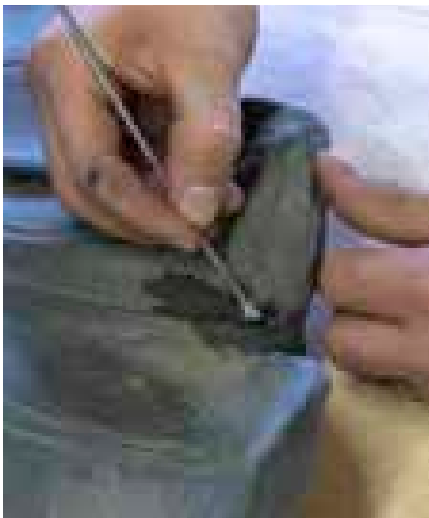


Making an original master
The process starts with an original master, made from wood, metal or clay

Master made from wood
40 years ago we specialised in wooden trellis and planters. This expertise has given us the ability to make authentic timber reproductions in fiberglass including the classic Windsor and stunning Driftwood designs.



Master made from metal
When manufacturing a lead or metal reproduction planter, a mould is made taken from a master made in the original material thus ensuring all the natural imperfections are carried through for an accurate representation.



Master made from clay
Clay work is our speciality with our talented in-house sculptors creating beautiful one-off pieces from which we take our moulds. From our clay originals we have produced stunning designs in our terracotta and Delphi white finishes. It is impossible to tell our lightweight terracotta from the heavy original until you try and lift it.



Making the mould
A mould is then made from the master. The moulding techniques for fiberglass have not changed since its inception in 1932. We use these tried and tested methods to create perfect moulds every time as a fiberglass planter is only as good as the mould it is made from.



The final process
All of our fiberglass planters are produced from the mould in the original finish. Nearly every planter goes through our finishing workshop, where our skilled team complete the final look of the planter.



Finished product
All these processes culminate in the perfect planter which will last a lifetime.

Custom Made

We regularly make simple tailor-made changes to our products. We can also create totally new designs.

Making Small Changes To Existing Products
More than half of our work involves making small adaptations to existing products such as changing the length, width or height, adding false floors to planters or commemorating an occasion with custom initials or date.

This brief was to make a large, ornate water tank to collect rain water. We combined two of our standard Taj Tanks together to create this stunning and practical piece.



Custom Made Planters
No planter is too big or small. We can make any size of planter from small one-off pieces to large commercial specifications. All of our planters can be made in any color or finish.

The brief for this project was to design a trough to fit the narrow steps of a smart London garden, providing privacy without taking up too much space.



Worldwide Projects and Commercial Installations

We work with designers and architects on some of the most prestigious interior and exterior projects. Working to designers' and architects' initial specifications, we provide on-site measuring and design services to the final installation.

We have workshops in England and the USA and export all over the world.

This picture shows a vast 98 inch diameter planter, being made for the London Olympic Village roof garden.





Geometric and Modern Designs

Cubic, tapered, triangular, spherical, great and small, our geometric designs suit the clean lines of contemporary architecture and planting. Stone, aluminium and faux lead finishes reflect this modern style perfectly. With the surface smooth or textured, other metallic or any standard color can be supplied.

All dimensions are rounded to the nearest inch



FINISH Stone



FINISH Grey Stone

Lisbon

- S** DIA 14 H31in CODE LISBON 3
- M** DIA 17 H39in CODE LISBON 4
- L** DIA 20 H47in CODE LISBON 4
- XL** DIA 24 H59in CODE LISBON 1

Geo Cone

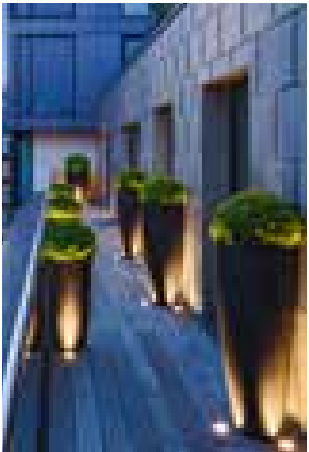
- S** DIA 13 H31in CODE GEOCONE 1
- M** DIA 16 H39in CODE GEOCONE 3
- L** DIA 18 H47in CODE GEOCONE 4



FINISH Custom RAL Color



FINISH Custom RAL Color



FINISH Black Textured



FINISH Black Textured



FINISH Aluminium Textured

Geo Round

- S** DIA 19 H15in CODE GEO 8S
- M** DIA 21 H20in CODE GEO 8M
- L** DIA 22 H26in CODE GEO 8L
- XL** DIA 28 H28in CODE GEO 7

Our pots and planters come without drainage holes as standard, we are happy to pre-drill them on request

Geo Sphere

- S** DIA 12in CODE SPH 1
- M** DIA 18in CODE SPH 2
- L** DIA 26in CODE SPH 3
- XL** DIA 46in CODE SPH 4



FINISH Stone

FINISH Aluminium Textured



FINISH Old Penny Bronze Textured

Geo Vase

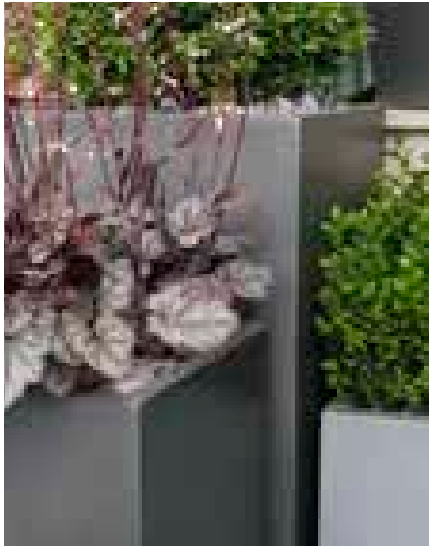
- S** DIA 16 H24in CODE VASE 5
- M** DIA 21 H32in CODE VASE 4
- L** DIA 28 H39in CODE VASE 3
- XL** DIA 41 H59in CODE VASE 2
- XXL** DIA 49 H82in CODE VASE 1

These vases are only available in textured finish.

All dimensions are rounded to the nearest inch



FINISH Faux Lead Textured



Geo Square

- S** W12 D12 H24in CODE SQU 1
- M** W14 D14 H31in CODE SQU 2
- L** W16 D16 H39in CODE SQU 3

Geo Cube

- S** W15 D15 H15in CODE CUBE 1
- M1** W21 D21 H21in CODE CUBE 2
- M2** W24 D24 H24in CODE CUBE 5
- L** W28 D28 H28in CODE CUBE 3
- XL** W39 D39 H39in CODE CUBE 4



FINISH Aluminium Textured



FINISH Faux Lead Textured

Our pots and planters come without drainage holes as standard, we are happy to pre-drill them on request

Geo Classic

- S** w16 d16 h20in CODE GEOC 3
- M** w20 d20 h26in CODE GEOC 2
- L** w25 d25 h31in CODE GEOC 1

Geo Tapered Square

- XS** w14 d14 h11in CODE GEO 6
- S** w14 d14 h16in CODE GEO 14
- M1** w17 d17 h22in CODE GEO 2
- M2** w11 d11 h31in CODE GEO 16
- L1** w13 d13 h39in CODE GEO 17
- L2** w28 d28 h30in CODE GEO 12
- L3** w20 d20 h39in CODE GEO 1
- L4** w16 d16 h47in CODE GEO 18
- XL** w24 d24 h55in CODE GEO 11
- XXL** w35 d35 h69in CODE GEO 9

Dimensions are taken at widest points.
Refer to line drawings on pages 58.



FINISH Aluminium Textured

Geo Trough

- S** w39 d20 h24in CODE TRO 6
- M1** w47 d12 h20in CODE TRO 1
- M2** w47 d12 h28in CODE TRO 4
- L1** w55 d16 h16in CODE TRO 2
- L2** w63 d24 h24in CODE TRO 3
- L3** w55 d12 h28in CODE TRO 5



FINISH Faux Lead Textured

Recommended finishes are as shown. Any of our finishes are available on request



FINISH Black Gloss



FINISH Faux Lead Textured

All dimensions are rounded to the nearest inch

All dimensions are rounded to the nearest inch

Geo Twister

- S** DIA 21 H13in CODE TWIST 1
- M** DIA 21 H21in CODE TWIST 2
- L** DIA 21 H31in CODE TWIST 3

Our pots and planters come without drainage holes as standard, we are happy to pre-drill them on request



FINISH Aluminium Smooth



FINISH Faux Lead Textured

Recommended finishes are as shown. Any of our finishes are available on request

Geo Bowl

- S1** DIA 24 H11in CODE BOWL 0
- S2** DIA 31 H14in CODE BOWL 1
- M** DIA 39 H18in CODE BOWL 2
- L** DIA 47 H22in CODE BOWL 3



FINISH Aluminium Textured

Geo Oval

- M** W28 D11 H16in CODE OVAL 1
- XL** W71 D27 H20in CODE OVAL 2
- XXL** W71 D27 H38in CODE OVAL 3

FINISH Faux Lead Textured



FINISH Faux Lead Textured

FINISH Aluminium Smooth

Long Tom

- S** DIA 9 H26in CODE LONGTOM 3
- M** DIA 12 H33in CODE LONGTOM 2
- L** DIA 14 H39in CODE LONGTOM 1



FINISH Black Textured

FINISH Stone

FINISH Black Textured

Bullet

Only available by special order

- M** DIA 24 H24in CODE BULLET



FINISH Black Textured



FINISH Stone

Beton

- M** w24 d24 h24in CODE BET 60
L w31 d31 h31in CODE BET 80
XL w39 d39 h39in CODE BET 100



FINISH Stone

Fairhaven

- XS** w12 d12 h24in CODE FAIR 1
S w15 d15 h15in CODE FAIR 4
M w15 d15 h31in CODE FAIR 2
L w18 d18 h39in CODE FAIR 3
XL w59 d30 h30in CODE FAIR 5



FINISH Antique Brass



FINISH Beaten Copper

Pall Mall

- Troughs
Only available by special order
L w77 d20 h20in CODE PALL 3
XL w89 d14 h20in CODE PALL 4



FINISH Antique Brass

Pall Mall

- Planters
M w24 d24 h22in CODE PALL 1
L w32 d32 h30in CODE PALL 2

All dimensions
are rounded to
the nearest inch

Driftwood

- S** w24 d24 h20in CODE DRIFT 60
M w31 d31 h28in CODE DRIFT 80
L w39 d39 h35in CODE DRIFT 100



FINISH Limed Wood

Recommended finishes are
as shown. Any of our finishes
are available on request

Classic Designs

Our stunning collection of classic planters range from a small 8in diameter round pot to a vast 87in long trough. Many of the designs have been created by our in-house design team and are therefore exclusive to us. All originals are made from wood, metal or clay and the craftsman's workings can still be seen in the finish.

All dimensions
are rounded to
the nearest inch

Grosvenor

S1 W16 D16 H16in CODE GROSVENOR 0

S2 W20 D20 H20in CODE GROSVENOR 1

M W24 D24 H24in CODE GROSVENOR 2

L1 W47 D12 H20in CODE GROSVENOR 3

L2 W35 D35 H35in CODE GROSVENOR 4

XL W55 D16 H28in CODE GROSVENOR 5

FINISH Faux Lead



FINISH Antique Faux Lead

Our pots and planters come without drainage holes as standard, we are happy to pre-drill them on request

Recommended finishes are as shown. Any of our finishes are available on request

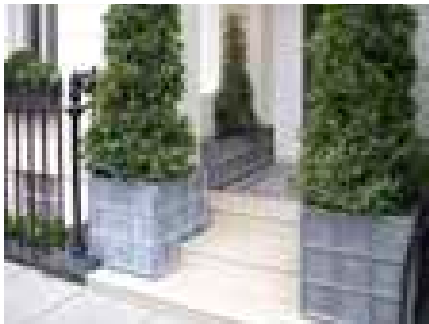




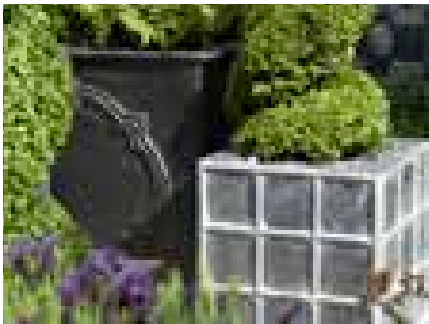
FINISH Antique Faux Lead

Downing Street
Troughs

- S** W31 D16 H16in CODE DOWN 3D
- M** W47 D16 H16in CODE DOWN 3T
- L1** W39 D20 H20in CODE DOWN 2D
- L2** W48 D24 H24in CODE DOWN 1D
- XL** W59 D20 H20in CODE DOWN 2T



FINISH Custom Made



FINISH Antique Faux Lead

Downing Street
Planters

- S** W16 D16 H16in CODE DOWN 3
- M1** W20 D20 H20in CODE DOWN 2
- M2** W24 D24 H24in CODE DOWN 1
- L1** W30 D30 H28in CODE DOWN 4
- L2** W39 D39 H39in CODE DOWN 0



FINISH Antique Faux Lead



FINISH Faux Lead

Stuart
Troughs

- S** W24 D9 H9in CODE STU 6122
- M** W36 D9 H9in CODE STU 9122
- L** W36 D12 H14in CODE STU 9130
- XL** W51 D16 H20in CODE STU 1340

All dimensions
are rounded to
the nearest inch



Stuart
Planters

- XS** W12 D12 H14in CODE STU 3030
- S** W15 D15 H18in CODE STU 3838
- M** W18 D18 H20in CODE STU 9130
- M** W24 D24 H29in CODE STU 6161



FINISH Faux Lead



FINISH Faux Lead

Trafalgar Square
Planters

- S** W16 D16 H16in CODE TRAFALGAR 40
- M** W20 D20 H20in CODE TRAFALGAR 50

Our pots and planters come
without drainage holes as
standard, we are happy to
pre-drill them on request

All dimensions
are rounded to
the nearest inch

Elizabethan
Planters

- S** w12 d12 h9in CODE ELIZ 1212
- M** w15 d15 h14in CODE ELIZ 1513
- L** w20 d20 h16in CODE ELIZ 2004



FINISH Antique Faux Lead

Cromwell
Planters

- S** w20 d20 h20in CODE CROMWELL 1
- M** w24 d24 h24in CODE CROMWELL 2
- L1** w30 d30 h30in CODE CROMWELL 5
- L2** w36 d36 h36in CODE CROMWELL 3



FINISH Antique Zinc

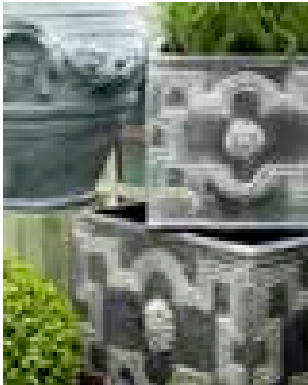
Elizabethan
Troughs

- M** w29 d15 h13in CODE ELIZ 1513D
- L1** w43 d15 h13in CODE ELIZ 1513T
- L2** w39 d20 h16in CODE ELIZ 2004D
- XL** w59 d20 h16in CODE ELIZ 2004T

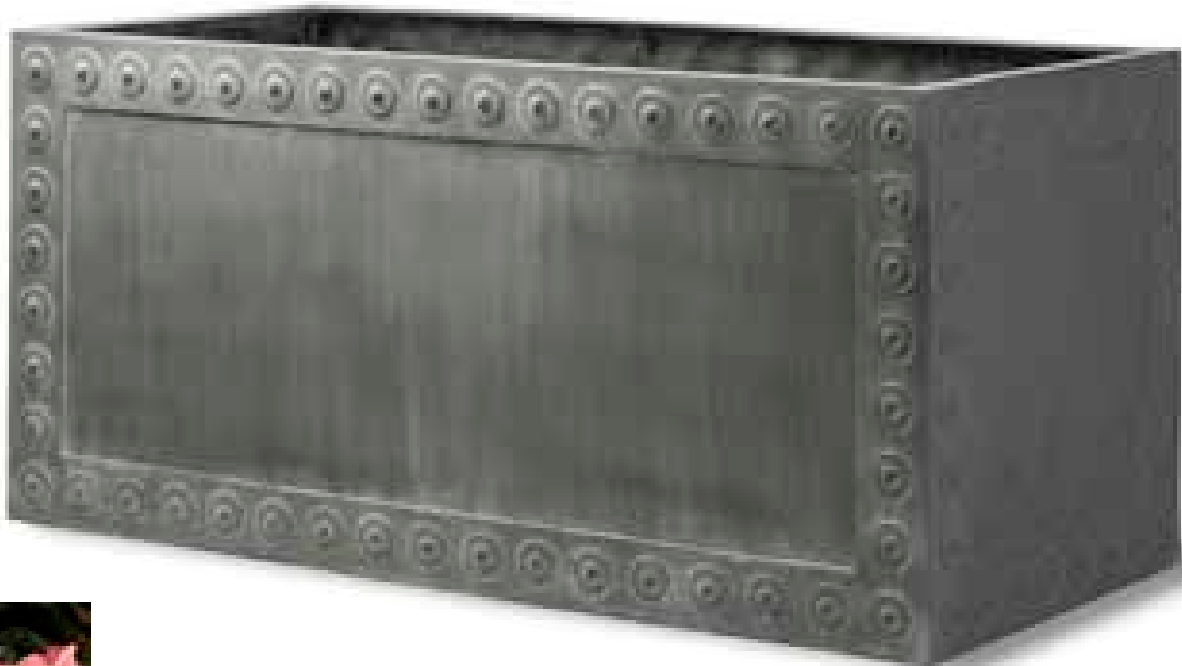


FINISH Faux Lead

Recommended finishes are
as shown. Any of our finishes
are available on request



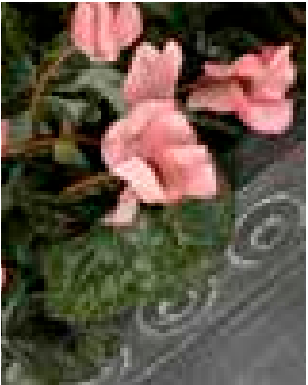
FINISH Antique Faux Lead



FINISH Antique Faux Lead

Cromwell
Trough

- L3** w52 d24 h24in CODE CROMWELL 4



FINISH Antique Faux Lead

Our pots and planters come
without drainage holes as
standard, we are happy to
pre-drill them on request

Hampton
Troughs

- L1** W36 D13 H15in CODE HAM 9130
- L2** W46 D24 H23in CODE HAM 5858D
- L3** W68 D24 H23in CODE HAM 5858T
- XL** W60 D31 H30in CODE HAM 2802D
- XXL** W87 D31 H30in CODE HAM 2802T

Our pots and planters come without drainage holes as standard, we are happy to pre-drill them on request



FINISH Faux Lead



FINISH Faux Lead

Hampton
Planters

- S** W15 D15 H15in CODE HAM 3838
- M** W24 D24 H23in CODE HAM 5858
- L** W31 D31 H29in CODE HAM 2802
- XL** W36 D36 H36in CODE HAM 9191



FINISH Faux Lead

Recommended finishes are as shown. Any of our finishes are available on request

Chelsea Troughs

- L1** W75 D12 H12in CODE CHELSEA 2
- L2** W75 D16 H16in CODE CHELSEA 3
- L3** W75 D20 H16in CODE CHELSEA 4

All dimensions are rounded to the nearest inch



FINISH Faux Lead

Saxon

- M** W29 D21 H31in CODE SAXON 1
- L** W49 D20 H28in CODE SAXON 2



FINISH Beaten Copper

Provencal Trough

- S** W39 D18 H18in CODE PROVENCALTR



FINISH Beaten Copper



FINISH Beaten Copper

Windsor

- S** w15 d15 h14in CODE WP 15
- M** w19 d19 h15in CODE WP 19
- L** w36 d15 h15in CODE WT 36
- XL** w26 d26 h24in CODE WP 25
- XXL** w39 d39 h35in CODE WP 40



FINISH Black Gloss



FINISH White Gloss

Chippendale

- S** w12 d12 h14in CODE CH 12
- M** w15 d15 h18in CODE CH 15
- L** w18 d18 h20in CODE CH 18

All dimensions are rounded to the nearest inch

Sloane

Planters

- S** w12 d12 h14in CODE SB 12
- M** w15 d15 h18in CODE SB 15
- L** w18 d18 h20in CODE SB 18
- XL** w24 d24 h29in CODE SB 24
- XXL** w31 d31 h39in CODE SB 31



FINISH White Gloss

Recommended finishes are as shown. Any of our finishes are available on request



FINISH Faux Lead Textured

Sloane

Troughs

- M** w36 d12 h14in CODE ST 36
- XL** w54 d15 h18in CODE ST 54

Our pots and planters come without drainage holes as standard, we are happy to pre-drill them on request



FINISH Black Gloss



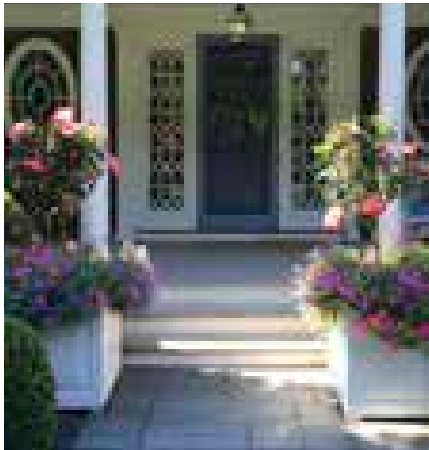
FINISH Black Gloss



FINISH White Gloss



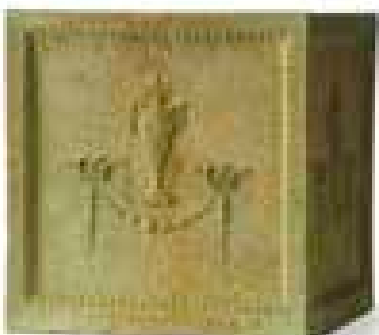
FINISH Faux Lead Textured



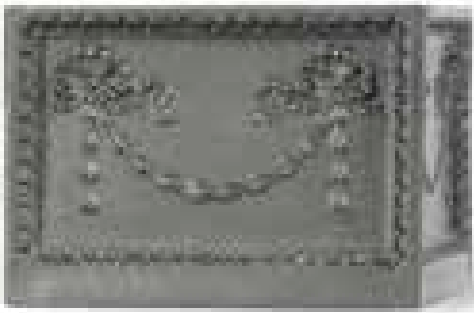
FINISH White Gloss



FINISH **Bronzage**
Botanical
S W13 D13 H14in CODE INDIT 12



FINISH **Bronzage**
Adam
S W15 D15 H15in CODE AD 15



FINISH **Faux Lead**
Adam
S W12 D12 H9in CODE AD 12



FINISH **Terracotta**

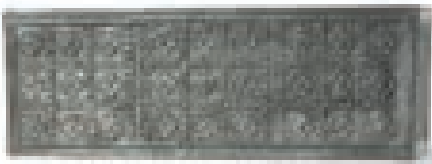
Thames Bowl
XL DIA 39 H20in CODE TB 4020



FINISH **Terracotta**



FINISH **Terracotta**
Garland
S DIA 12 H9in CODE GA 1409



FINISH **Faux Lead**
Tudor Rose Trough
S W24 D9 H9in CODE TUD 2508



FINISH **Faux Lead**
Devil's Punch Bowl
XS DIA 11 H7in CODE JD 1



Citrus Troughs
S W12 D12 H7in CODE CT 12
M W19 D9 H7in CODE CT 18
L W35 D15 H13in CODE CT 35

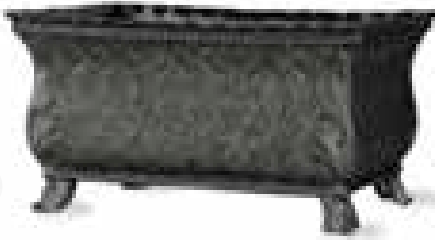


FINISH **Terracotta**
Citrus Tub
S DIA 14 H7in CODE CT 14

All dimensions
are rounded to
the nearest inch



FINISH **Faux Lead**
Victorian Trough
M W20 D10 H10in CODE VIC 2010



FINISH **Faux Lead**
Basket Weave
M W24 D16 H14in CODE BASK 2416



FINISH **Faux Lead**
Acanthus
M W26 D12 H13in CODE ACANTHUS

Oakleaf Troughs
M W36 D15 H14in CODE OT 36
L W54 D15 H18in CODE OT 54



FINISH **Terracotta**



FINISH **Bronzage**
Dauphin
S W14 D8 H6in CODE JD 2

FINISH **Bronzage**



Half Tonbridge
S DIA 13 H9in CODE T HALF 1309



FINISH **Bronzage**

Tonbridge
S DIA 13 H9in CODE T 1309



FINISH **Terracotta**

Classic Designs

Our stunning collection of round planters ranges from a small 8in diameter to a vast 79in diameter. Many of the designs have been created by our in-house design team and are therefore exclusive to us. All originals are made in clay and the craftsman’s workings can still be seen in the finish.



FINISH Terracotta

Citrus

- S** DIA 14 H11in CODE CT 1215
- M1** DIA 18 H15in CODE CT 1815
- M2** DIA 22 H18in CODE CT 1923
- L** DIA 26 H24in CODE CT 2428



FINISH Terracotta

Plain

- S** DIA 14 H11in CODE PLN 1215
- M1** DIA 18 H15in CODE PLN 1815
- M2** DIA 22 H18in CODE PLN 1923
- L** DIA 26 H24in CODE PLN 2428



FINISH Terracotta

Oakleaf

- S** DIA 14 H11in CODE OAK 1215
- M1** DIA 18 H15in CODE OAK 1815
- M2** DIA 22 H17in CODE OAK 1923



FINISH Terracotta

Fern

- S** DIA 14 H11in CODE FERN 1215
- M1** DIA 18 H15in CODE FERN 1815
- M2** DIA 22 H18in CODE FERN 1923



FINISH Terracotta

Ivy

- S** DIA 14 H11in CODE IVY 1215
- M1** DIA 18 H15in CODE IVY 1815
- M2** DIA 22 H18in CODE IVY 1923
- L** DIA 26 H24in CODE IVY 2428



FINISH Terracotta

Shimmer

- S** DIA 14 H13in CODE SHIM 1314
- M** DIA 17 H17in CODE SHIM 1717
- L** DIA 22 H23in CODE SHIM 2322



FINISH Terracotta

Lattice

- M** DIA 17 H14in CODE LS2113



FINISH Terracotta

Fleur de Lis

- S** DIA 24 H20in CODE FLEUR 1
- M** DIA 15 H14in CODE FLEUR 2



FINISH Rust

FINISH Delphi White

FINISH Terracotta

Tulip

- S** DIA 10 H16in CODE TULIP 3
- M** DIA 15 H24in CODE TULIP 2
- L** DIA 18 H31 in CODE TULIP 1

Pineapple

- S** DIA 9 H7in CODE PINE 3
- M** DIA 21 H18in CODE PINE 2
- L** DIA 31 H27in CODE PINE 1



FINISH Terracotta

Fishscale Bowl

- L** DIA TOP 37 H25in CODE FS 3825



FINISH Bronzage



FINISH Bronzage

All dimensions
are rounded to
the nearest inch

Bollinger

- L** DIA 30 H30in CODE BOLL 3
- XL** DIA 39 H39in CODE BOLL 2
- XXL** DIA 47 H49in CODE BOLL 1



FINISH Stone

Large Pot

- M** DIA 23 H19in CODE LP 23
- L** DIA 38 H24in CODE LP 38
- XL** DIA 53 H33in CODE LP 56
- XXL** DIA 63 H46in CODE LP 63



FINISH Terracotta

Fishscale

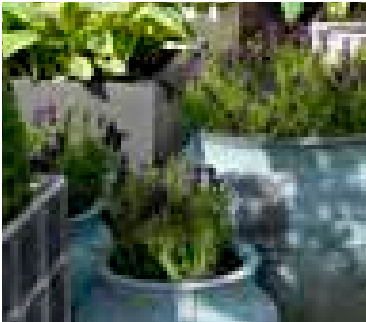
- M** DIA TOP 22 H18in CODE FS 2219
- L** DIA TOP 28 H24in CODE FS 2824



FINISH Bronzage

Bell Jar

- S DIA 20 H15in CODE BL 5139
- M DIA 24 H18in CODE BL 6146
- L DIA 32 H18in CODE BL 8145
- XL DIA 33 H24in CODE BL 8562



FINISH Beaten Copper



FINISH Beaten Copper

Norman

- S DIA 20 H14in CODE NORMAN 3
- M DIA 24 H18in CODE NORMAN 2
- L DIA 30 H22in CODE NORMAN 1



FINISH Beaten Copper



FINISH Rust

Our pots and planters come without drainage holes as standard, we are happy to pre-drill them on request

Ram's Head

- L DIA 12 H23in CODE RA 2424



FINISH Terracotta



FINISH Beaten Copper



FINISH Antique Faux Lead

Recommended finishes are as shown. Any of our finishes are available on request

Sussex

- L DIA 36 H32in CODE SU 3236

All dimensions are rounded to the nearest inch



FINISH Terracotta



FINISH Terracotta

All dimensions
are rounded to
the nearest inch



FINISH Antique Zinc

Stuart

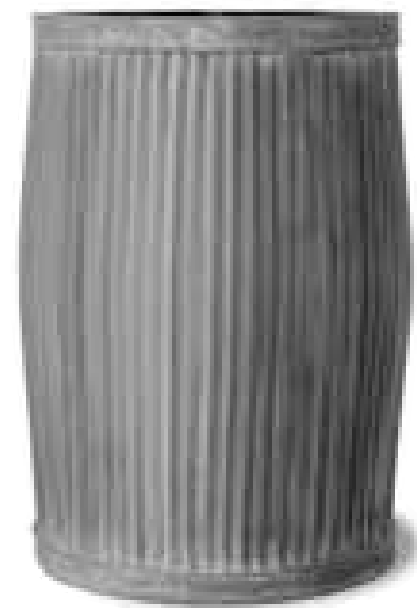
M DIA 19 H21in CODE STUART R



FINISH Antique Zinc

Grosvenor

M DIA 19 H21in CODE GROSVENOR R



FINISH Antique Zinc

Dolly

S DIA TOP 16 DIA MID 17 H24in CODE DOLLY



FINISH Antique Faux Lead

Ship

M DIA 20 H18in CODE SP 2001

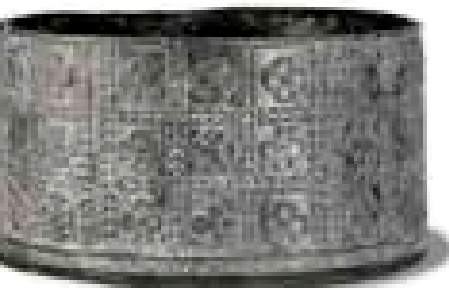


FINISH Antique Zinc

Trafalgar

S DIA 19 H17in CODE TRAFR 1
M DIA 28 H28in CODE TRAFR 2
L DIA 31 H24in CODE TRAFR 3

FINISH Antique Faux Lead



Tudor Rose

S DIA 16 H8in CODE TU 1602
M1 DIA 16 H17in CODE TU 1601

Arabesque

S W16 D16 H14in CODE ARAB 1
M W20 D20 H18in CODE ARAB 2
L W24 D24 H21in CODE ARAB 3

Recommended finishes are
as shown. Any of our finishes
are available on request



FINISH Antique Brass



FINISH Beaten Copper

Citadel

S DIA 24 H11in CODE CITADEL 1
M DIA 33 H14in CODE CITADEL 2
L DIA 39 H18in CODE CITADEL 3

Our pots and planters come
without drainage holes as
standard, we are happy to
pre-drill them on request

Botticelli

XL DIA TOP 28 DIA WIDEST 33 H22in CODE BOTTICELLI



FINISH Rust



FINISH Antique Brass

Mediterranean Collection

Our search of the farms, vineyards and ports of the Mediterranean has brought together this remarkable collection of vessels for wine, olive oil and molasses, and our reproductions are as true in detail as possible. Optional metal stands are available.

All dimensions are rounded to the nearest inch



FINISH Delphi White

FINISH Delphi White

FINISH Delphi White

Mediterranean 2

M DIA 17 H22in CODE MED 2
Shown on optional metal stand

Mediterranean 4

L DIA 24 H28in CODE MED 4
Shown on optional metal stand

Mediterranean 5

L DIA 19 H20in CODE MED 5



FINISH Delphi White



FINISH Bespoke Terracotta

Mediterranean 3

L DIA 29 H21in CODE MED 3

Our pots and planters come without drainage holes as standard, we are happy to pre-drill them on request

Beehive

L DIA 24 H32in CODE BEE 3224



FINISH Delphi White

FINISH Terracotta

FINISH Terracotta

Cretan Oil Jar

L DIA 30 H39in CODE CRET 3828

Mediterranean 1

L DIA 20 H30in CODE MED 1
Shown on optional metal stand



FINISH Delphi White



FINISH Bespoke Terracotta



FINISH Terracotta



Window Boxes

Our fiberglass window boxes are wonderful imitations of antiques and contemporary originals. Due to the lightweight nature of fiberglass they can be easily placed on window sills, balustrading, roof terraces or hung from brackets and railings.

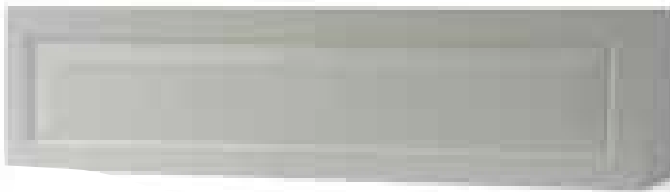
To see the range of brackets see page 62.



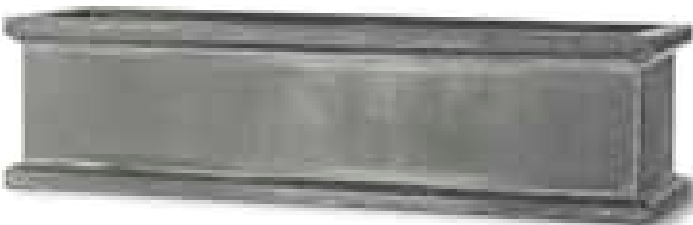
FINISH Faux Lead Textured

Sloane

- S** W30 D7 H8in CODE SWB 30
- M** W36 D9 H9in CODE SWB 36
- L** W48 D8 H8in CODE SWB 48



FINISH White Gloss



FINISH Antique Faux Lead

Grosvenor

- M** W36 D9 H9in CODE GROSWBOX 2



FINISH Faux Lead Smooth

Chelsea

- M** W38 D9 H9in CODE CHELSEA 1



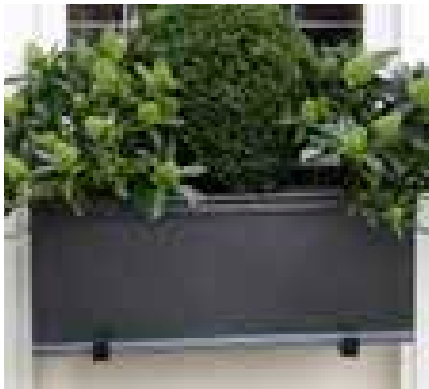
FINISH Faux Lead Textured

All dimensions are rounded to the nearest inch

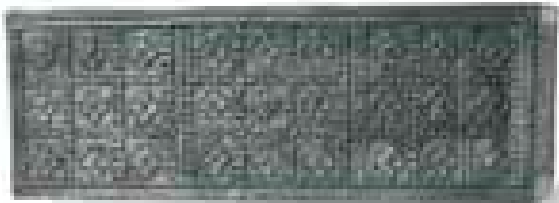
Geo

- S** W16 D8 H10in CODE WBOX 3
- M** W28 D8 H10in CODE WBOX 2
- L** W39 D8 H10in CODE WBOX 1

Recommended finishes are as shown. Any of our finishes are available on request



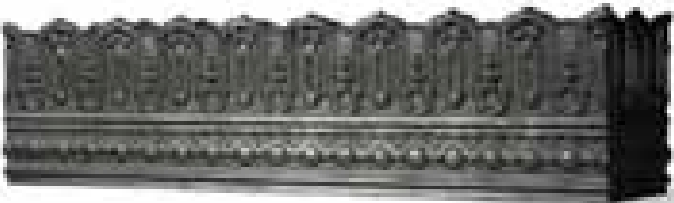
FINISH Faux Lead



FINISH Faux Lead

Tudor Rose

S W24 D9 H9in CODE TUD 2508



FINISH Faux Lead

Pinot Noir

M W39 D9 H10in CODE PINOT 1



FINISH Faux Lead

Swag

S W24 D8 H8in CODE SWAG 2402

M W36 D8 H8in CODE SWAG 3603

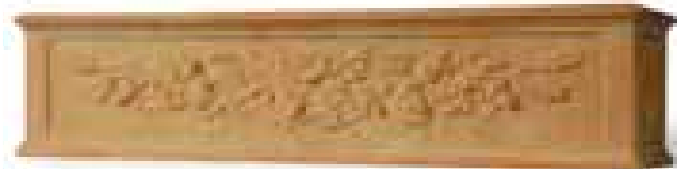


FINISH Faux Lead

Hampton

S W24 D12 H9in CODE HAM 6122

M W36 D12 H9in CODE HAM 9122

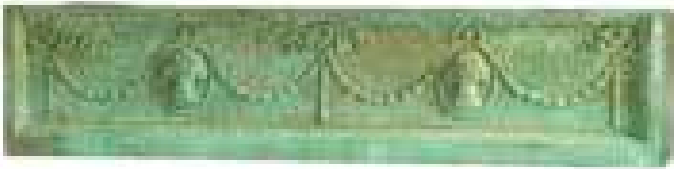


FINISH Terracotta

Oakleaf

S W24 D9 H9in CODE OAK 24

M W36 D9 H9in CODE OAK 36

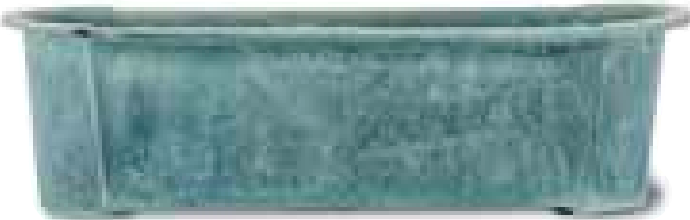


FINISH Bronzage

Wheatsheaf

S W24 D11 H8in CODE WH 24

M W36 D11 H8in CODE WH 36



FINISH Beaten Copper

Provencal

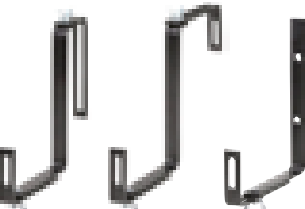
L W39 D11 H11in CODE PROVENCAL WB



FINISH Antique Brass

Pall Mall

L W39 D8 H10in CODE PALL WB



Brackets

We supply black powder-coated metal brackets to fit the majority of our window boxes. These are adjustable and can be used for hanging window boxes against walls, balconies and railings.



FINISH Faux Lead

FINISH Antique Faux Lead

All dimensions are rounded to the nearest inch



FINISH Faux Lead

Stuart

S W24 D9 H9in CODE STU 6122

M W36 D9 H9in CODE STU 9122



FINISH Faux Lead



FINISH Faux Lead



FINISH Faux Lead



Water Tanks & Water Features

Romantic and practical... use these versatile tanks as rainwater reservoirs or large planters. In these days of water shortages, collecting rainwater is a must for many gardens. Fitted with a backplate and fountain they also provide the sound and movement of water. We can also supply lids, taps, wheels, false floors and water pumps when required.

Pumps are available to order for all fountains and water features

George & Dragon
XL W38 D18 H26in CODE GD 3618

Recommended finishes are as shown. Any of our finishes are available on request



FINISH Antique Faux Lead



FINISH Antique Faux Lead

George III Double
XL W56 D28 H30in CODE GIII 2829D

All dimensions are rounded to the nearest inch



FINISH Antique Faux Lead

George III
L W29 D30 H30in CODE GIII 2829



FINISH Antique Faux Lead

Cromwell
L W30 D30 H30in CODE CROMWELL 5
XL W36 D36 H30in CODE CROMWELL 3



FINISH Antique Faux Lead

James II
L W29 D29 H30in CODE JII 2801



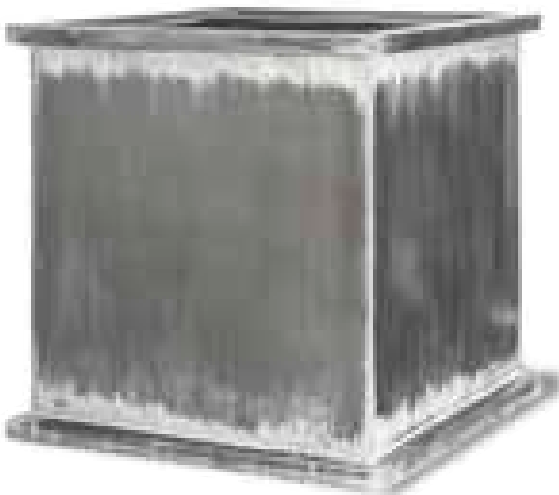
FINISH Faux Lead

Hampton
L W31 D31 H30in CODE HAM 2802
XL W36 D36 H36in CODE HAM 9191



FINISH Antique Faux Lead

Downing Street
L2 W39 D39 H39in CODE DOWN 0



FINISH Antique Faux Lead

Grosvenor
XX W35 D35 H35in CODE GROSVENOR 4

Our pots and planters come without drainage holes as standard, we are happy to pre-drill them on request

Cromwell
L1 W52 D24 H24in CODE CROMWELL 4

Pumps are available to order for all fountains and water features



FINISH Antique Faux Lead



FINISH Faux Lead

Hampton
XL W60 D31 H30in CODE HAM 2802D
XXL W87 D31 H30in CODE HAM 2802T

All dimensions are rounded to the nearest inch



FINISH Antique Faux Lead



FINISH Antique Faux Lead



FINISH Faux Lead



Hampton Fountain
L w31 d16 h34in CODE HAM 9112

Pumps are available to order for all fountains and water features

James II
Tank XL w51 d29 h30in CODE JII 4901
Fountain Backplate w51 h30in CODE JIIBP 4901



FINISH Faux Lead



These tanks are available with, or without the fountain backplate

- George & Dragon
- Taj Tank 1
- James II

We recommend that fountain backs are attached to a wall or fence for additional support.



FINISH Bronzage

Taj Tank 1 & Fountain
Tank w25 d19 h28in CODE TAJ 2319
Fountain Backplate w25 h30in CODE TAJBP 2319



FINISH Bronzage



FINISH Terracotta

Taj Tank 2
L w37 d25 h28in CODE TAJ 2338

All dimensions are rounded to the nearest inch



FINISH Faux Lead



FINISH Faux Lead



FINISH Faux Lead

Our pots and planters come without drainage holes as standard, we are happy to pre-drill them on request



FINISH Bronzage

Water Babies
S W16 D8 H28in CODE FO 14



FINISH Terracotta

Petal
L W19 D9 H31in CODE FO 26



FINISH Terracotta

Dutch Master
M W16 D6 H29in CODE FO 12



FINISH Terracotta

Taj Corner
L W24 D19 H39in CODE FO 18



FINISH Bronzage

Flower
M W20 D6 H35in CODE FO 08



FINISH Faux Lead

Ram's Head
M W20 D8 H30in CODE FO 09



FINISH Faux Lead

Gargoyle
L W20 D10 H35in CODE FO 22



FINISH Faux Lead

Dolphin
M W20 D9 H29in CODE FO 01



FINISH Bronzage



FINISH Terracotta

Great Dolphin Bowl
XL W37 D20 H38in CODE FO 13



FINISH Faux Lead

Great Lion Bowl
XL W37 D20 H38in CODE FO 10

Bowl Fountain

- XS DIA 24 H11in CODE BOWL 0 FTN
- S DIA 31 H14in CODE BOWL 1 FTN
- M DIA 39 H18in CODE BOWL 2 FTN
- L DIA 47 H22in CODE BOWL 3 FTN

All dimensions
are rounded to
the nearest inch

Pumps are available to
order for all fountains
and water features



FINISH Aluminium Textured



FINISH Bronzage



FINISH Faux Lead



FINISH Faux Lead Textured

Urns and Pedestals

Urns create an eye-catching focal point, especially on one of our matching pedestals. On a wall, or resting on the ground in a flower border, they create additional interest whether planted or unplanted. From small table-top sizes to large urns, the designer or flower arranger will appreciate the light weight of fiberglass.

Recommended finishes are as shown. Any of our finishes are available on request

All dimensions are rounded to the nearest inch



FINISH Bronzage

FINISH Terracotta

Medici Urn

L DIA 24 BASE DIA 11 H28in CODE MEDI 3023

Oakleaf Urn

XXL TOP DIA 42 BASE W24 H53in CODE OAK 4353

Pedestal 4

L DIA 23 TOP DIA 16 H31in CODE PED 4

Pedestal 10

XL TOP W26 BASE W28 H33in CODE PED 10



Roman 1 Urn
XXL DIA 36 BASE W18 H48in CODE RO 3648

Pedestal 12
XL W24 D24 H43in CODE PED 12



Roman 2 Urn
XXL DIA 50 BASE W18 H34in CODE RO 4833

Pedestal 54
XL W21 D21 H21in CODE PED 54



FINISH Silver Leaf



FINISH Beaten Copper

All dimensions
are rounded to
the nearest inch

Recommended finishes are
as shown. Any of our finishes
are available on request

Fluted Urns

- S DIA 11 BASE W6 H14in CODE FLU 1220
- M DIA 16 BASE W8 H18in CODE FLU 1605
- L DIA 23 BASE W11 H30in CODE FLU 2330



Pedestal 3
L TOP W9 BASE W13 H28in CODE PED 3

Pedestal 11
L TOP W13 BASE W18 H39in CODE PED 11

Pedestal 9
L TOP W13 BASE W18 H24in CODE PED 9



FINISH Silver Leaf

Our pots and planters come without drainage holes as standard, we are happy to pre-drill them on request

Cache Pot Vases

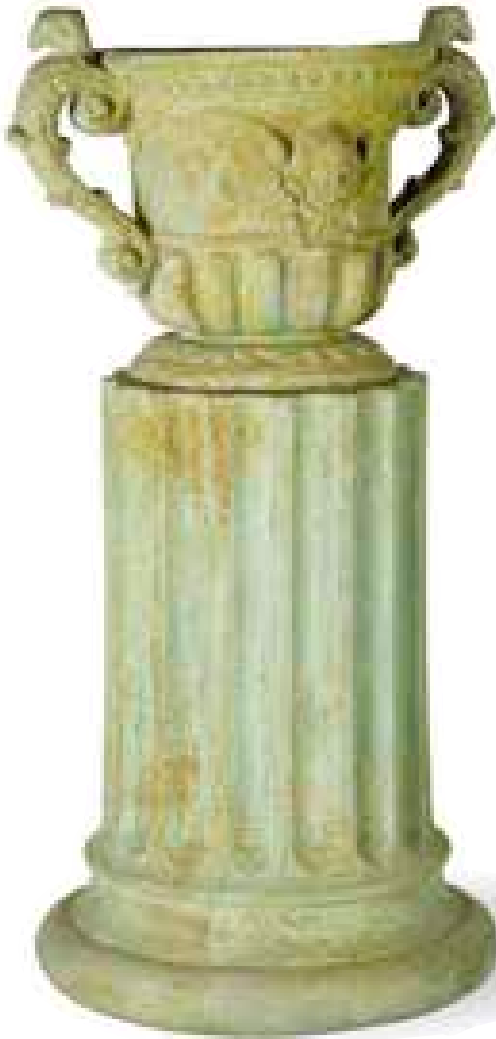
- S** w7 d7 h14in CODE VA 1
- M1** w11 d11 h20in CODE VA 2
- M2** w17 d17 h28in CODE VA 3
- L** w21 d21 h35in CODE VA 4



FINISH Antique Brass

Queen Anne Urn

M TOP DIA 17 BASE DIA 13 H18in CODE ANNE 1701



FINISH Bronzage

Pedestal 4

XL TOP DIA 16 BASE DIA 23 H31in CODE PED 4



FINISH Faux Lead

Pedestal 11

XL TOP W13 BASE W18 H39in CODE PED 11

Ewhurst Vase

M DIA 18 BASE W10 H27in CODE EV 1727



FINISH White

Pedestal 9

XL TOP W13 BASE W18 H24in CODE PED 9

Shallow Urn

M DIA 30 BASE W12 H21in CODE SHA 2922



FINISH Faux Lead

Recommended finishes are as shown. Any of our finishes are available on request



FINISH Bronzage

French Tazza Urn

M TOP DIA 20 BASE DIA 9 H15in CODE TAZ 2115



FINISH Faux Lead

Grecian Urn

M DIA 17 BASE W9 H20in CODE GRE 1703



FINISH Faux Lead

Small Urn

S DIA 11 BASE W5 H8in CODE JD 4



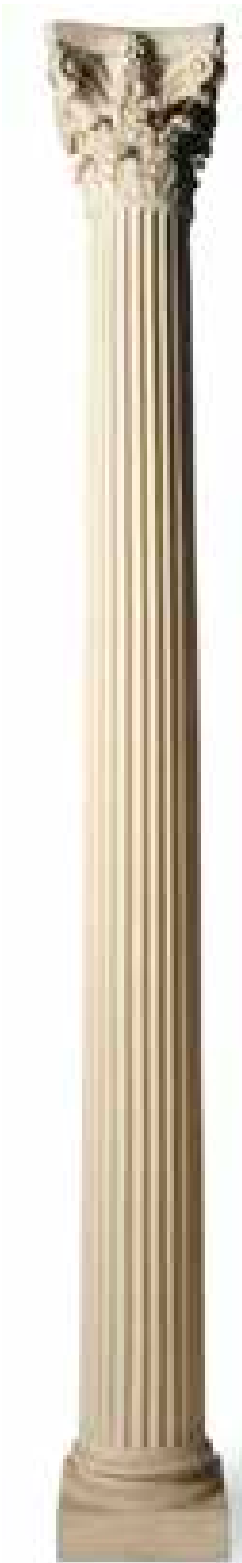
FINISH Stone

Bodium Urn

M DIA 22 BASE W11 H22in CODE BOD 2222

All dimensions are rounded to the nearest inch

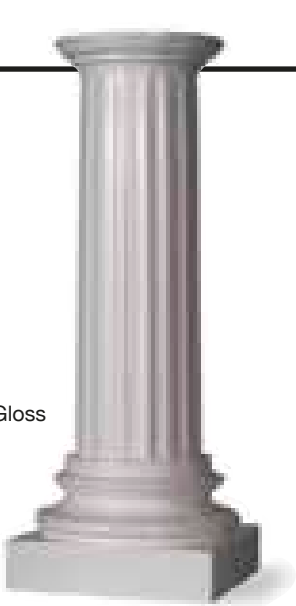
Recommended finishes are as shown. Any of our finishes are available on request



FINISH Stone

Column
Custom columns made to order

FINISH White Gloss



Pedestal 1
M TOP DIA 10 BASE 13 H33in CODE PED 1

FINISH Black Gloss

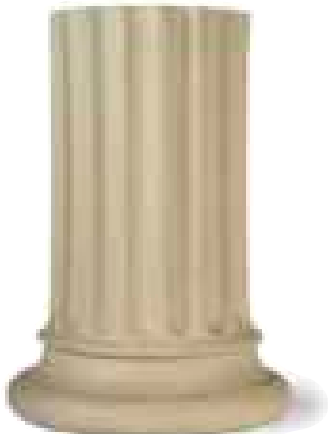


Pedestal 2
L TOP DIA 13 BASE W13 H48in CODE PED 2



FINISH Terracotta

Pedestal 3
M TOP W9 BOTTOM W13 H28in CODE PED 3



FINISH Stone

Pedestal 4
M TOP DIA 16 BASE DIA 23 H31in CODE PED 4



FINISH Faux Lead

Pedestal 5
S W8 D8 H13in CODE PED 5



FINISH Stone

Obelisk
XL W21 D21 H99in CODE OBEL 2



FINISH Bronzage

Pedestal 9
M TOP W18 BASE W18 H24in CODE PED 9



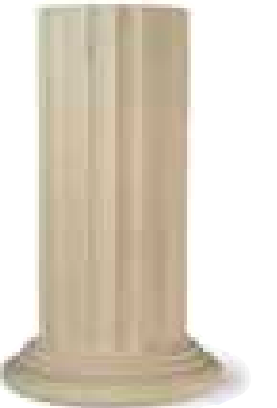
FINISH Bronzage

Pedestal 6
S TOP W16 BASE W11 H23in CODE PED 6



FINISH Terracotta

Pedestal 7
M W20 D20 H30in CODE PED 7



FINISH Stone

Pedestal 8
M TOP DIA 12 BASE DIA 17 H31in CODE PED 8

All dimensions are rounded to the nearest inch



FINISH Aluminium Textured

Pedestal 54
M W21 D21 H21in CODE PED 54



FINISH Terracotta

Pedestal 10
M TOP W25 BASE W27 H32in CODE PED 10



FINISH Faux Lead

Pedestal 11
L TOP W13 BASE W18 H39in CODE PED 11



FINISH Antique Brass

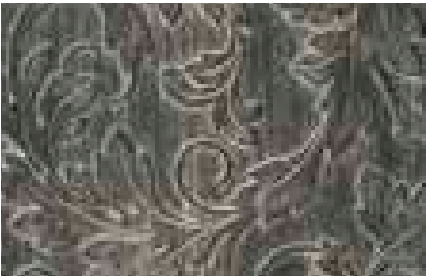
Pedestal 12
L TOP W24 BASE W24 H43in CODE PED 12

Range of Finishes

All of our planters are made in the original color therefore they cannot chip or flake revealing a different color below. As an ongoing process we are creating new and ‘special’ finishes to order. Colors may vary due to the nature of our hand finishing and the accuracy of printing.



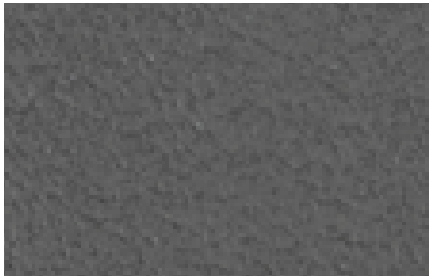
Faux Lead



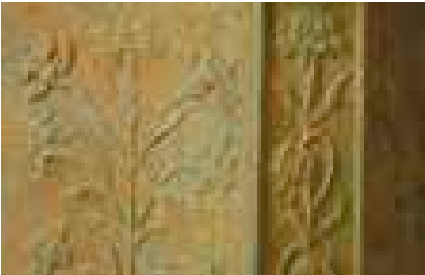
Antique Faux Lead



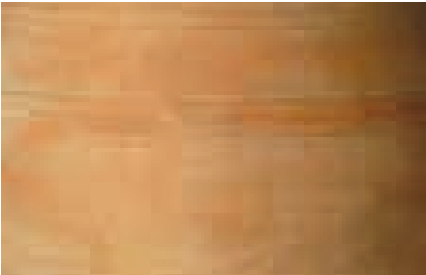
Antique Zinc



Faux Lead Textured



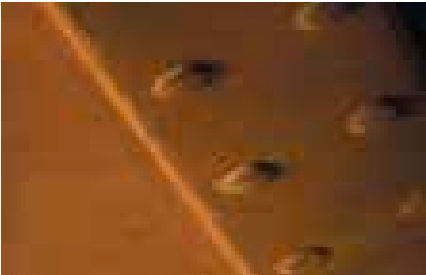
Bronzage



Terracotta



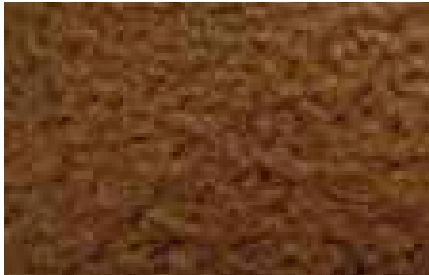
Delphi White



Rust



Old Penny Bronze Smooth



Old Penny Bronze Textured



Aluminium Smooth



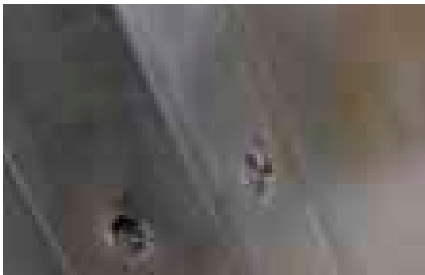
Aluminium Textured



Grey Stone



Bath Stone



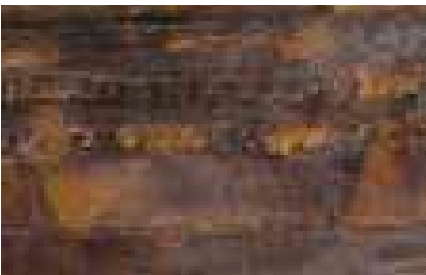
Antique Brass



Beaten Copper

Special Hand Finishes

We specialise in realistic reproductions of multiple materials. Alongside our standard finishes we have a specialist in-house team that can create a variety of alternative finishes ranging from Old Gold Verdigris to Silver Leaf.



Custom Terracotta



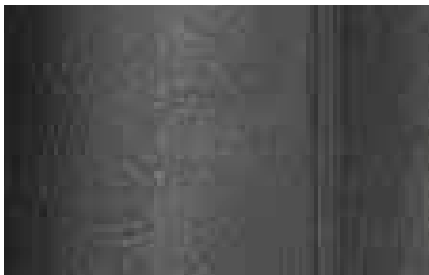
Old Gold Verdigris



Gold Leaf



Silver Leaf



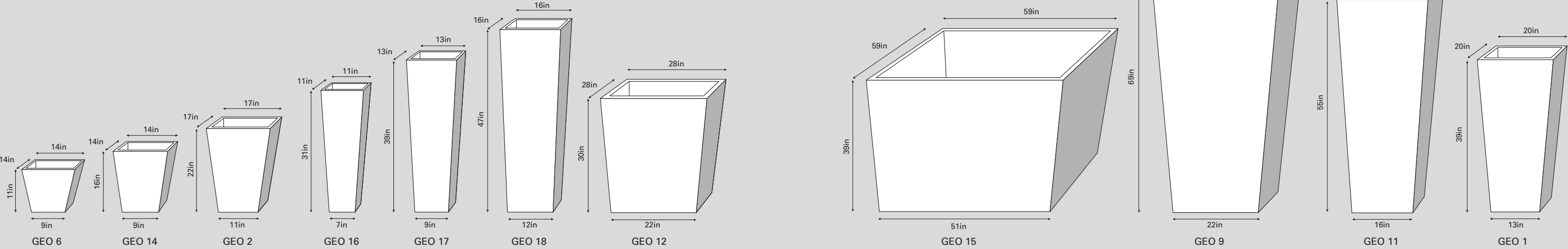
Real Leather

Custom Colors

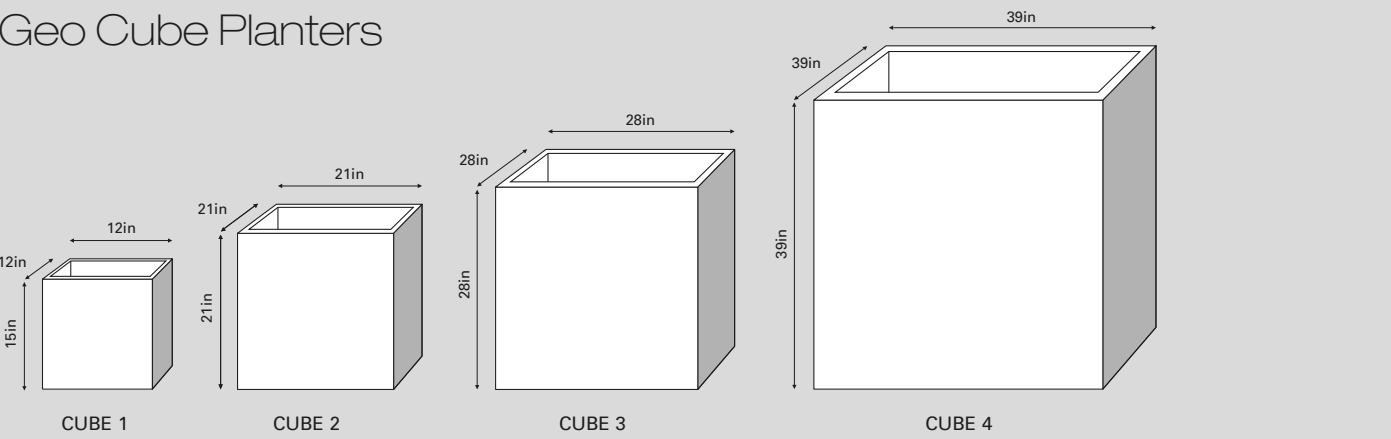
All of our planters are available to order in any RAL color, we can also match the major US paint manufacturers’, such as Benjamin Moore or Sherwin, color palettes.

| | | | | | | | | | |
|----------|----------|----------|----------|----------|----------|----------|----------|----------|----------|
| RAL 1000 | RAL 1028 | RAL 3004 | RAL 4003 | RAL 5012 | RAL 6000 | RAL 6027 | RAL 7024 | RAL 7036 | RAL 8015 |
| RAL 1007 | RAL 2000 | RAL 3012 | RAL 4010 | RAL 5014 | RAL 6011 | RAL 7002 | RAL 7032 | RAL 8000 | RAL 8023 |
| RAL 1016 | RAL 2012 | RAL 4001 | RAL 5000 | RAL 5021 | RAL 6021 | RAL 7009 | RAL 7033 | RAL 8004 | RAL 8028 |

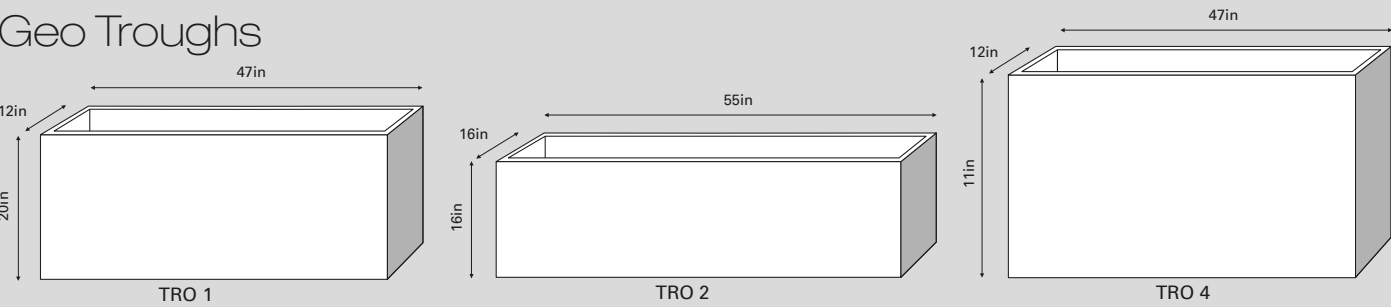
Geo Tapered Square Planters



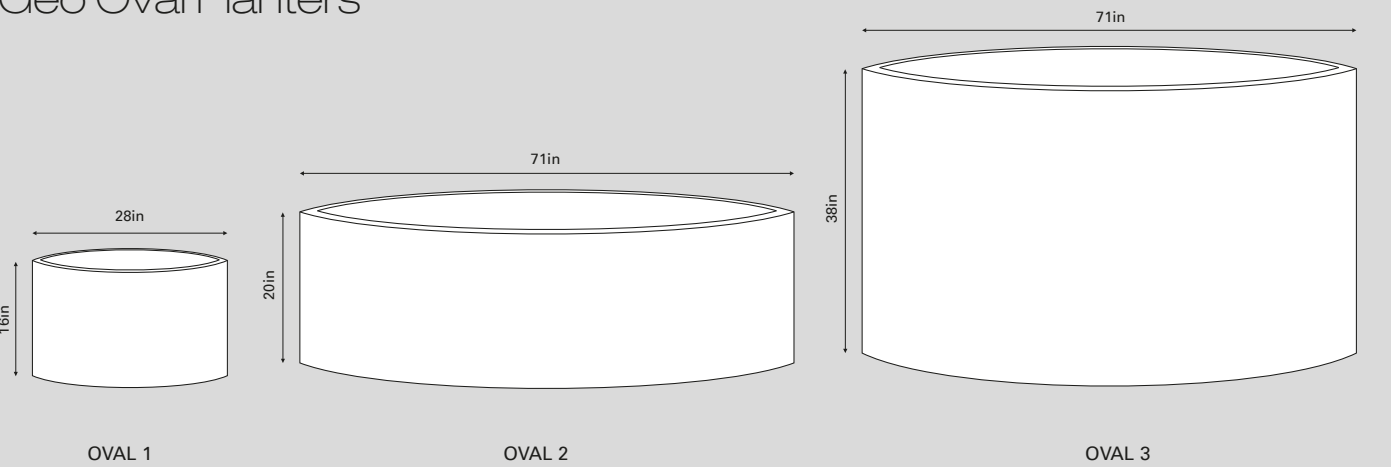
Geo Cube Planters



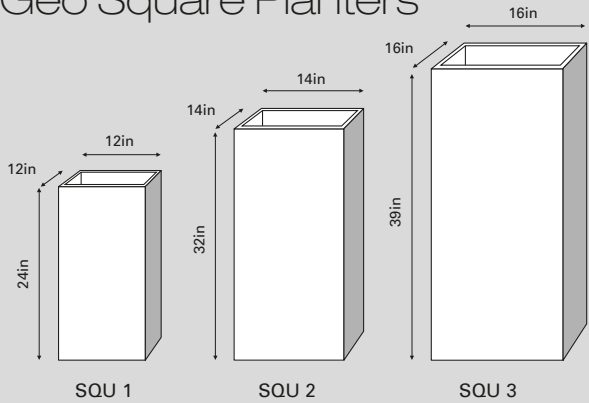
Geo Troughs



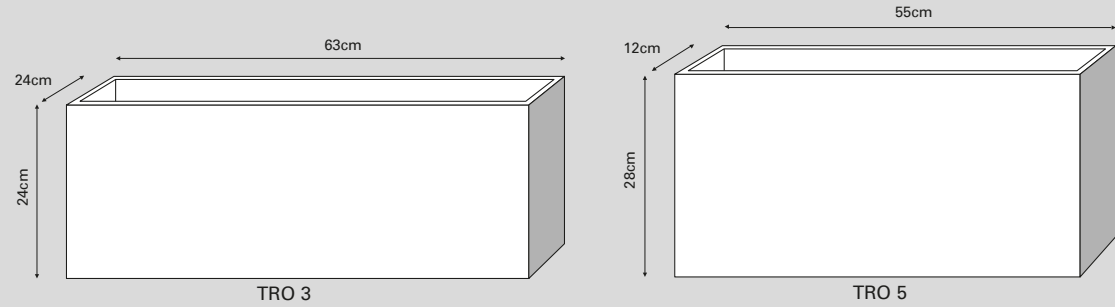
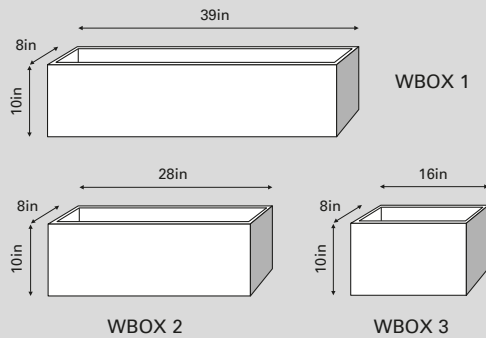
Geo Oval Planters



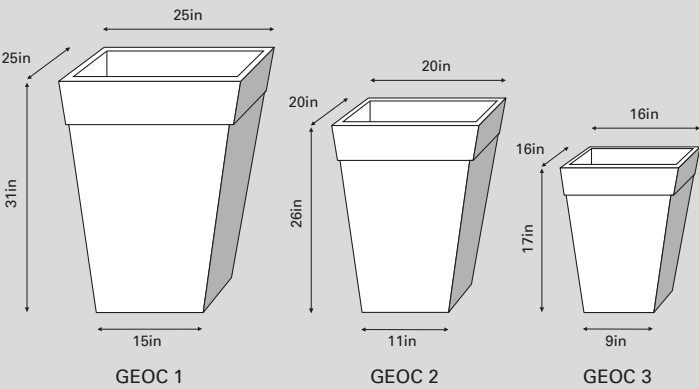
Geo Square Planters



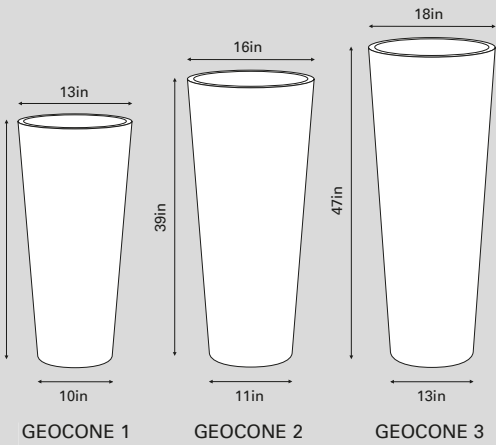
Geo Window Boxes



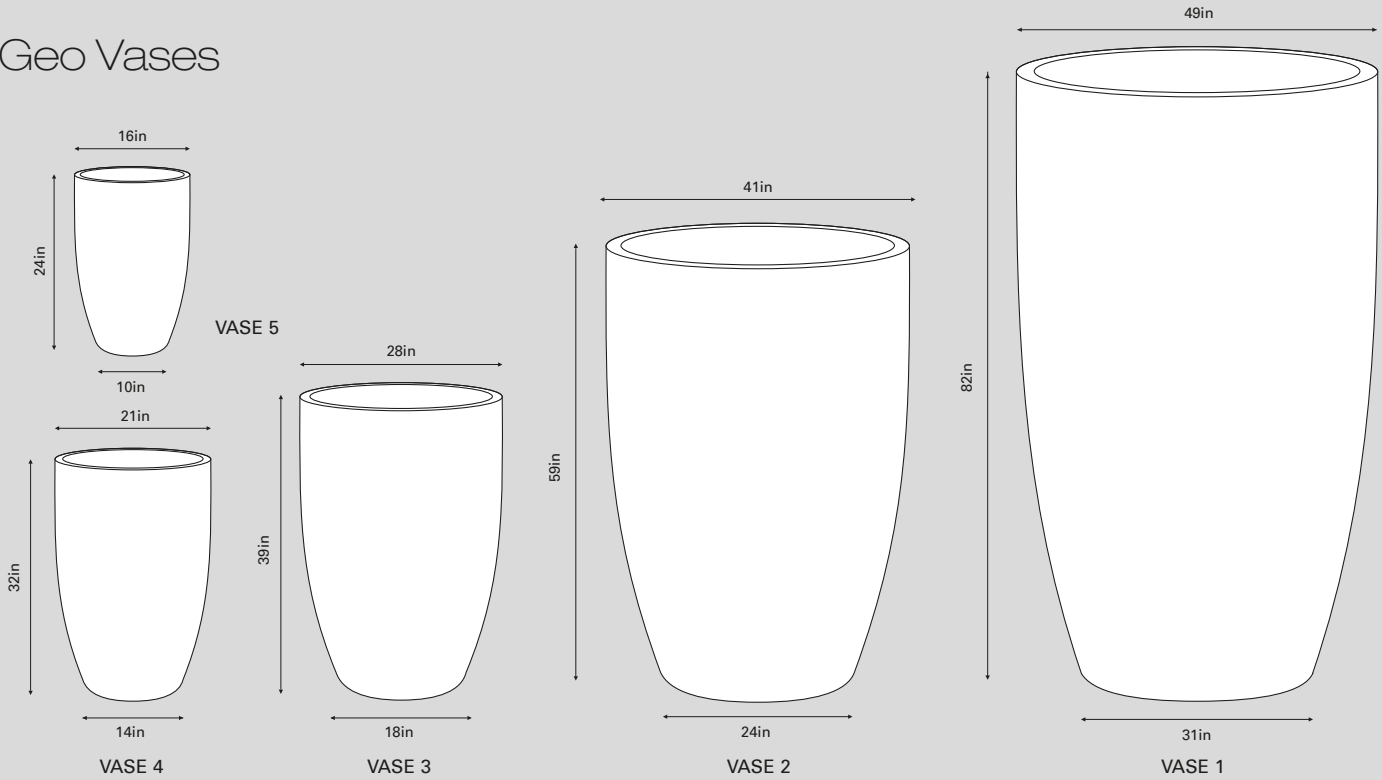
Geo Classic Planters



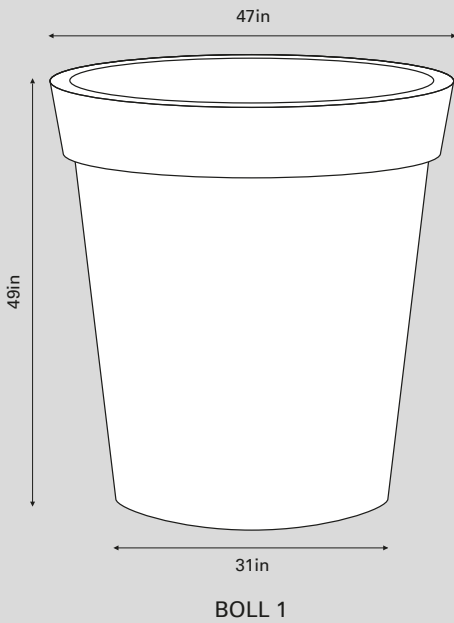
Geo Cone Planters



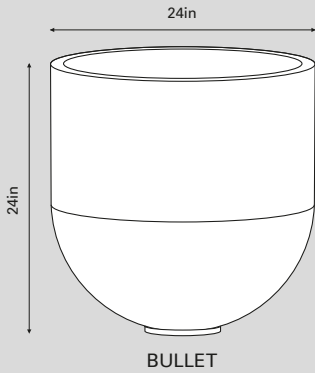
Geo Vases



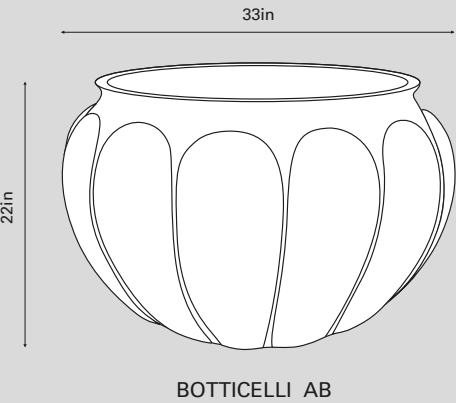
Bollinger Planter



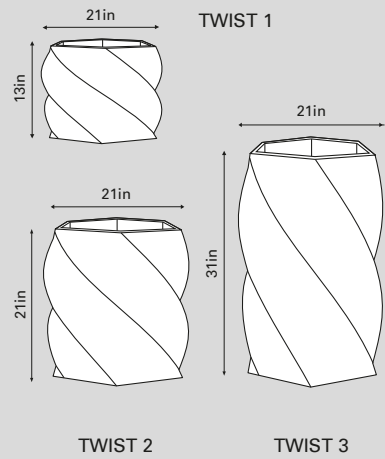
Bullet Planter



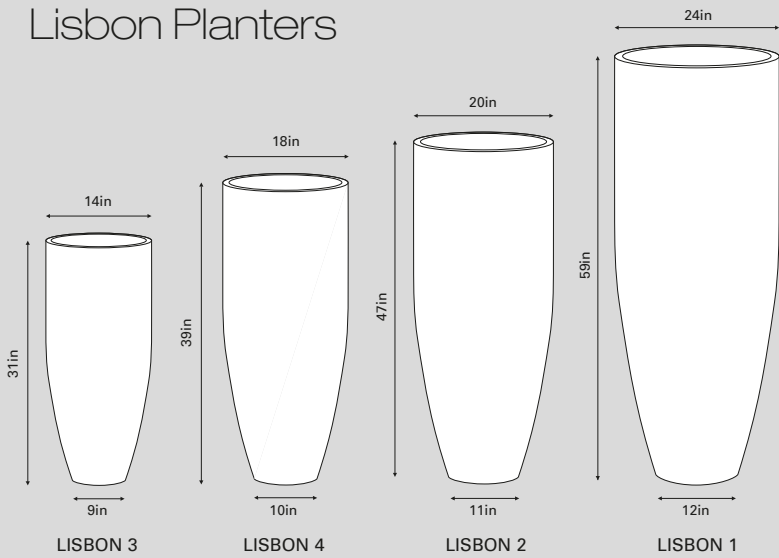
Botticelli Planter



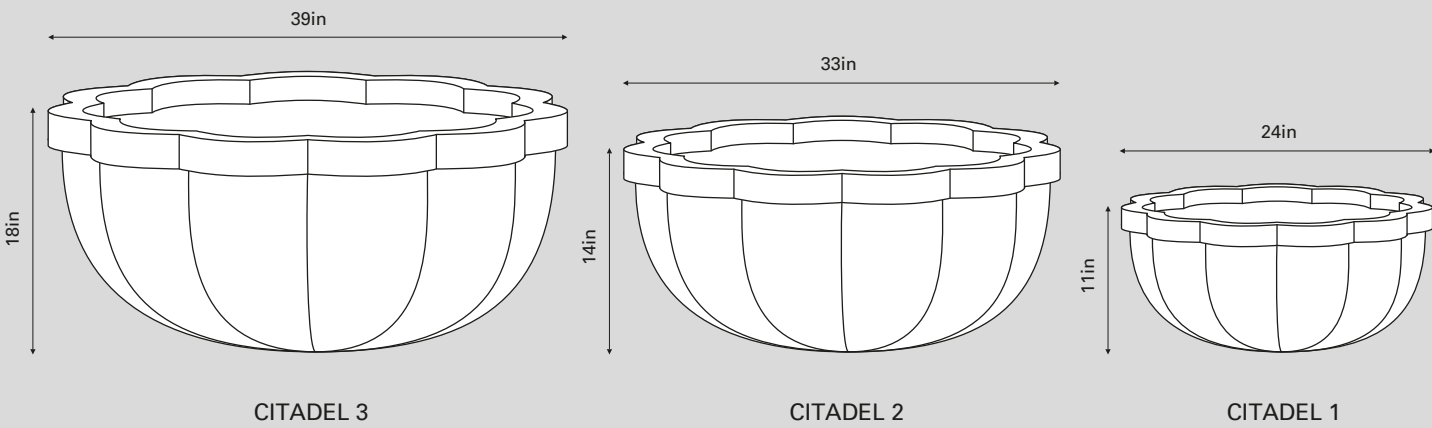
Twist Planters



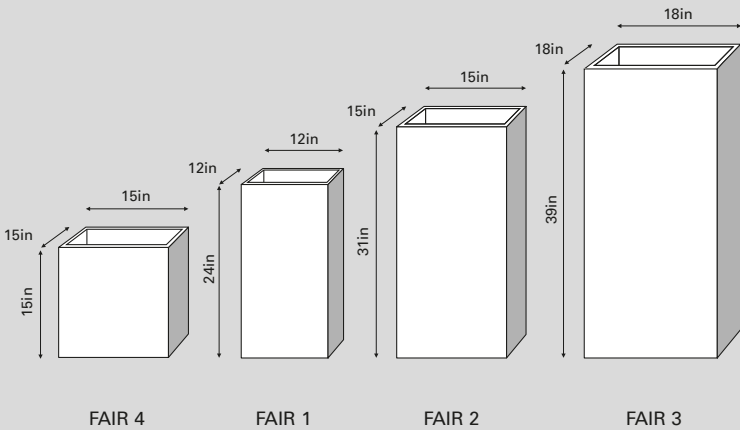
Lisbon Planters



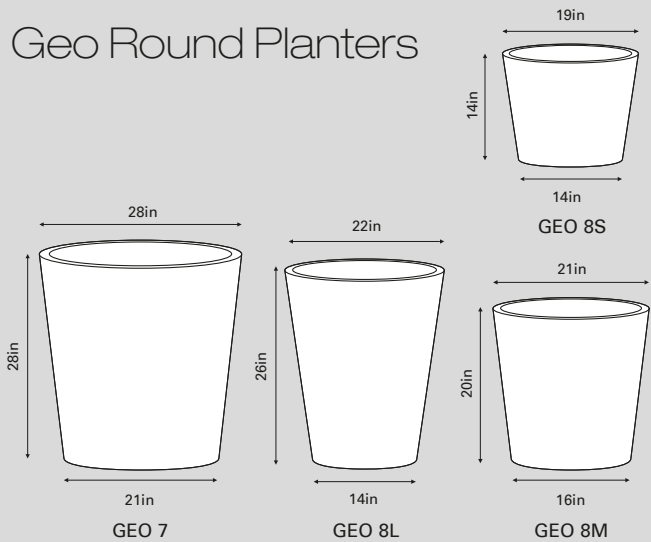
Citadel Planters



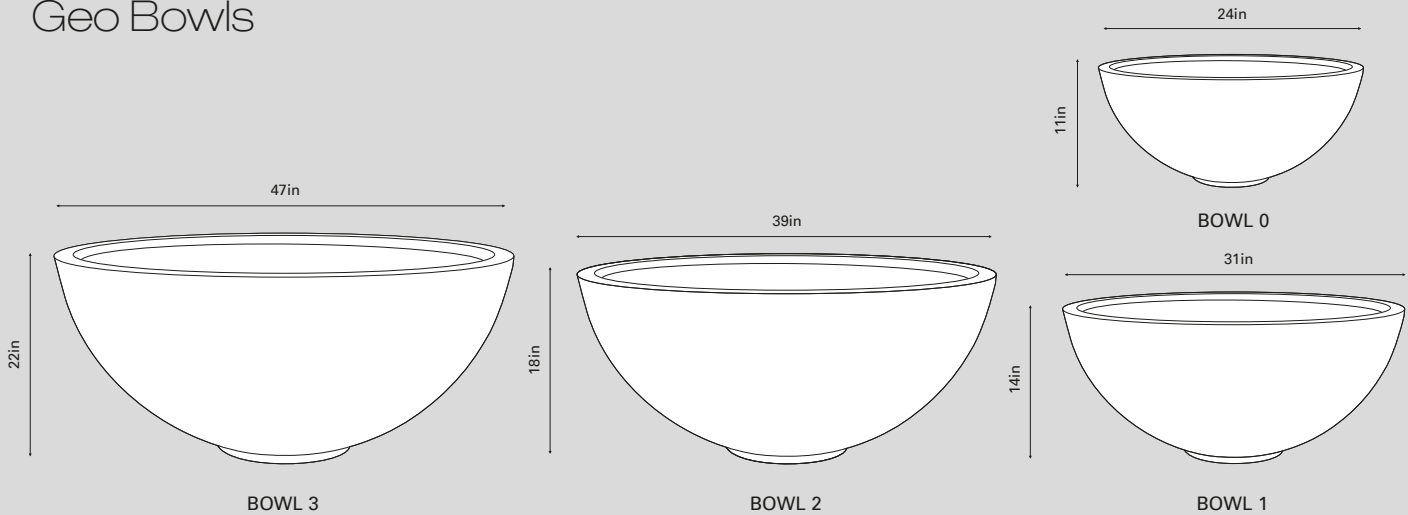
Fairhaven Planters



Geo Round Planters



Geo Bowls

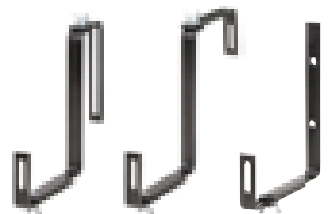


Accessories



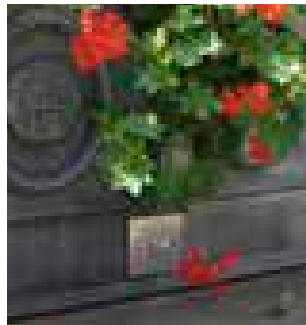
Water reservoirs

A proven design used commercially in the trade for many years. The tank is placed 45cm below the roots and water is released by capillary action. They are easy to fill and have an integral water level indicator. Use individually or link for larger planting. For advice please call.



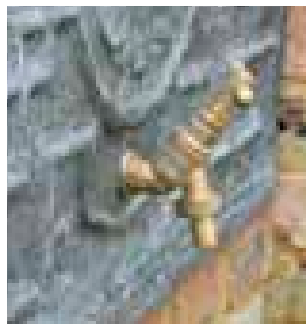
Brackets

We supply smart, black powder-coated metal brackets to fit the majority of our window boxes. These are adjustable and can be used for hanging window boxes against walls, balconies and railings. The discrete lip at the front ensures the window boxes stay in place in any weather.



Lighting

Working closely with a number of leading outdoor lighting manufacturers, we can fit lights into most of our planters or fountains. Lighting creates an inviting, atmospheric mood, as well as a practical solution for lighting a garden at night.



Taps

Brass taps can be fitted to all tanks and planters to make filling a watering can an easy task. The taps can be placed in any position to your specification.

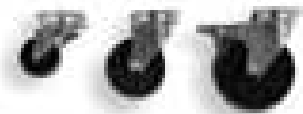
False Floors

A useful addition to many of our planters is our ability to add a false floor at any level so that the planting depth can be reduced. Superb for flower arranging, exhibitions and temporary displays (we use them at all our exhibitions). Specify your requirements or speak with our team of experts.



Pallet Bases

We can raise or insert bases into our larger, heavier planters to enable them to be moved more easily by forklift or by pallet truck.



Hidden Wheels

Concealed within the base, they are a very useful addition to larger planters. They enable tender plants to be moved easily. They facilitate cleaning and provide an option for moveable living screens in any setting. We supply a variety of wheels (with or without brakes) and offer a bespoke solution for any situation.



Adaptations...

- Lids for troughs and water tanks
- Drip trays for all planters
- Trellis and screens
- Felt feet and rubber mats available to protect floors or carpets
- Drainage holes can be drilled on request



Cutout photographs and catalog design by Colin Walton at WaltonCreative.com



CAPITAL
GARDEN PRODUCTS

USA Office

Capital Garden Products Ltd
PO BOX 792
Whitehouse Station
NJ 08889
USA

USA Orders, Quotes & Queries

PHONE 908-823-4378
EMAIL pam@capgardenus.com

UK Office and Showroom

Capital Garden Products Ltd
Gibbs Reed Barn
Pashley Road
Ticehurst
East Sussex TN5 7HE
United Kingdom

UK Orders, Quotes & Queries

PHONE +44 (0) 1580 201092
EMAIL sales@capital-garden.com

capital-garden.com



CAPITAL

GARDEN PRODUCTS

USA Office

Capital Garden Products Ltd
PO BOX 792
Whitehouse Station
NJ 08889
USA

PHONE 908-823-4378

EMAIL pam@capgardenus.com

WEB capital-garden.com

UK Office & Showroom

Capital Garden Products Ltd
Gibbs Reed Barn
Pashley Road
Ticehurst
East Sussex TN5 7HE
United Kingdom

PHONE +44 (0) 1580 201092

EMAIL sales@capital-garden.com

WEB capital-garden.com