



## POWER BURNER

### STANDARD FEATURES

- High-performance 321SS tubular outer burner at 50,000 BTU/hour
- 20,000 BTU/hour brass inner burner with simmer capability
- Electronic spark ignition system with re-ignition capability
- Commercial-grade 1/2" diameter stainless steel rod grate with 1/4" thick DiamondCut Grate™ center that is removable for wok cooking

Grate



Wok Compatible



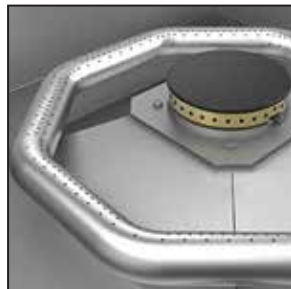
Bright LED Lighting



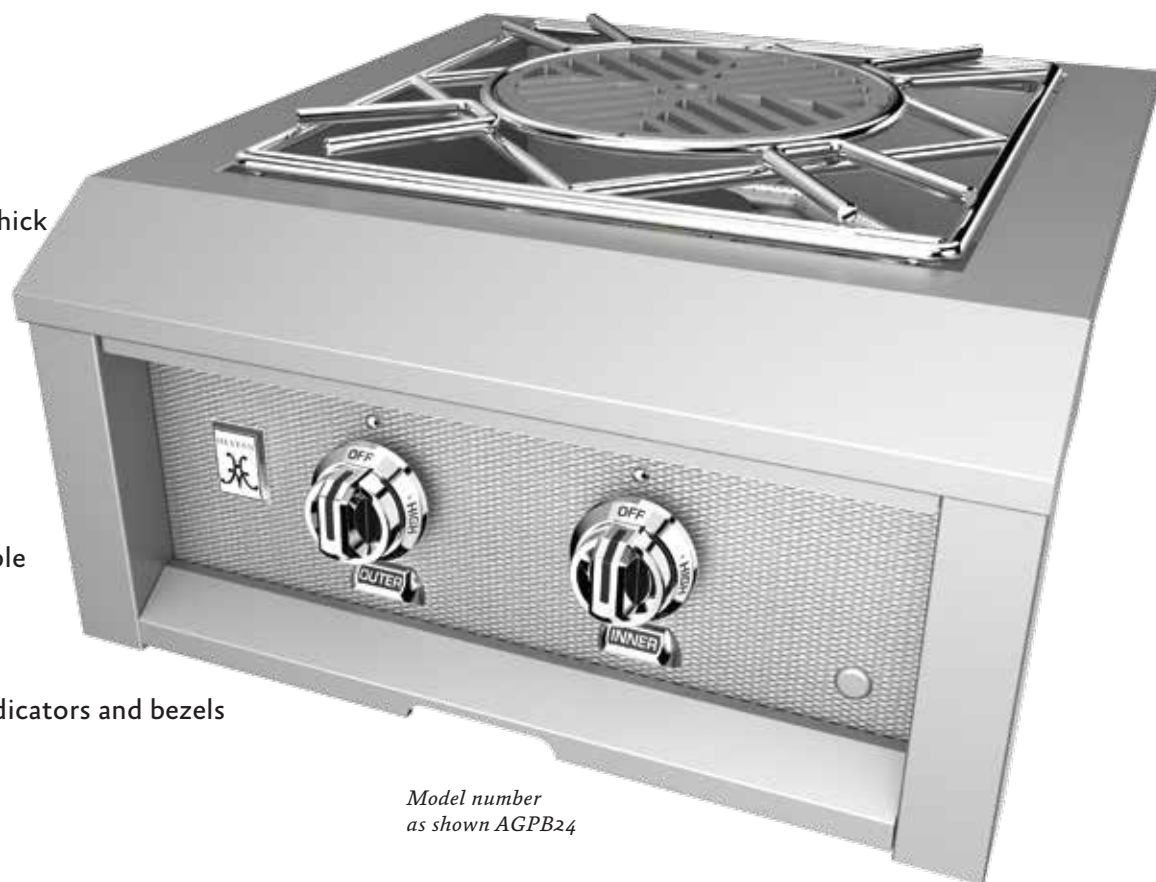
Stainless Cover



Power Burner



- Accommodates 14"-20" diameter woks
- Sealed burner bowl with drain
- Stainless steel removable drip tray for ease of cleaning
- Marquise™ accented control panel
- LED front control panel lighting with simple touch on function
- Heavy gauge welded body construction
- Patented Zamak die-cast knobs, burner indicators and bezels
- Stainless steel top cover



Model number  
as shown AGPB24

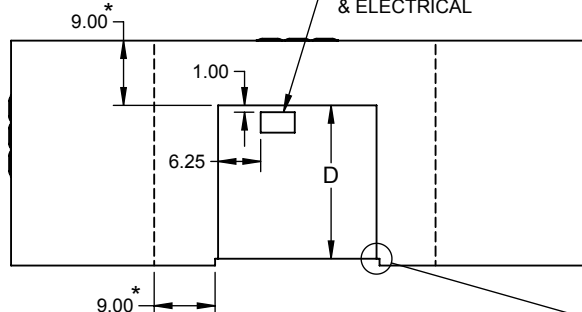
### OPTIONS & ACCESSORIES

- Natural Gas (NG) or Liquid Propane (LP)
- Twelve (12) Hestan signature color finishes
- Carbon Fiber Vinyl Cover
- Gas conversion kits (NG/LP)
- High altitude kit

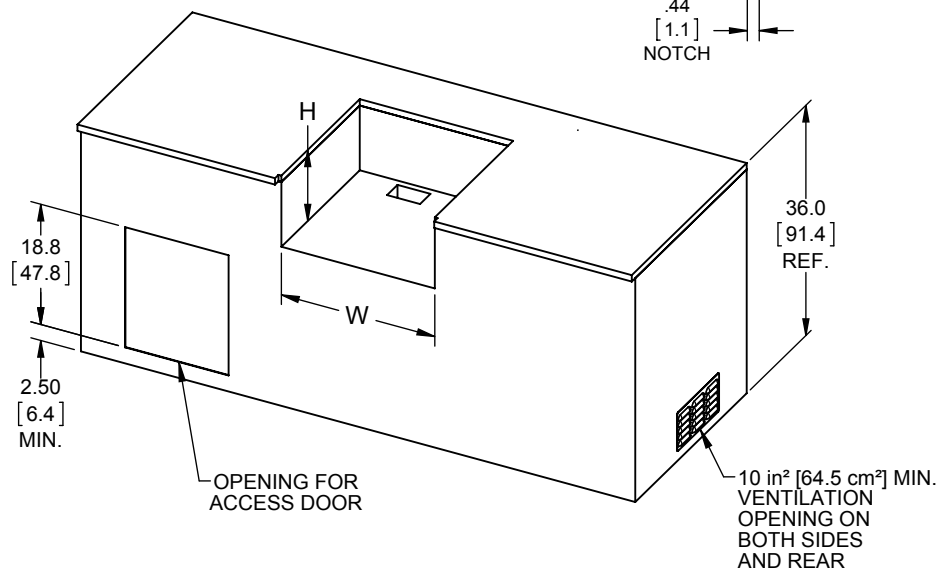
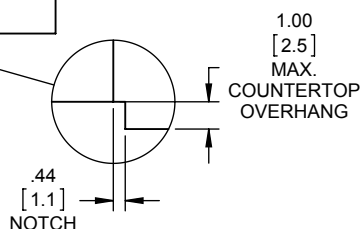


\* MIN. VERT. CLEARANCE TO COMBUSTIBLE CONSTRUCTION (SEE MANUAL PG. 9)

3 X 5 [7.6 X 12.7]  
OPENING FOR  
GAS SUPPLY  
& ELECTRICAL



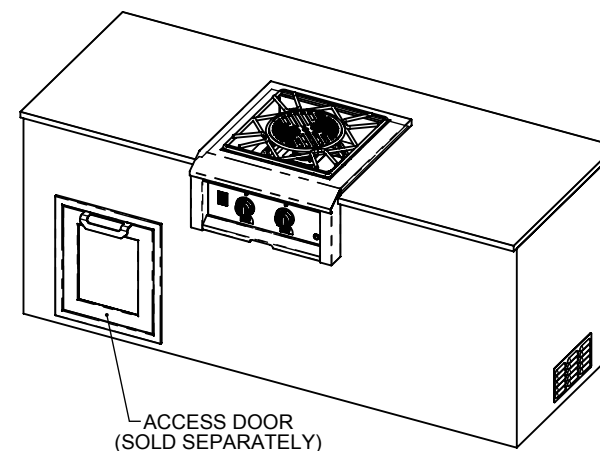
TOP VIEW



## LAYOUT FOR NON-COMBUSTIBLE ENCLOSURE (ISLAND)

POWER BURNER	W		D		H	
	(in)	(cm)	(in)	(cm)	(in)	(cm)
AGPB24	23.25	59.1	22.50	57.2	11.13	28.3

DIMENSIONS IN [ ] ARE IN CM.



TYPICAL ISLAND  
COUNTERTOP INSTALLATION

**ELECTRICAL REQUIREMENTS** : 120V, 60Hz, 1 amp

**GAS REQUIREMENTS** : 1/2" NPT gas connection. Minimum gas supply is 7" water column for natural gas and 11" for propane. Operating pressure at the manifold is 4" water column for natural gas and 10" for propane. All units require a regulated gas supply. (included) Hestan Outdoor products are approved for outdoor use only. Hestan Commercial Corporation reserves the right to change materials and specifications without notice. Specify type of gas when ordering.



All Models	Description	Cutout Dimensions			Total Btu's
		W(in.)	D(in.)	H(in.)	
AGPB24-NG / -LP	Power Burner, Built-in, 24"	23-1/4	22-1/2	11-1/8	70,000