

KINGSLEY-BATE

Fine Garden Furniture

ASSEMBLY INSTRUCTIONS FOR THE TB-38/76



TABLE TOP



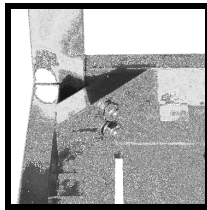
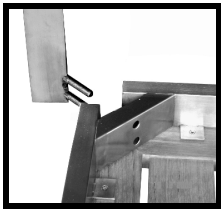
HARDWARE



LEGS

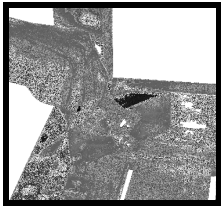
STEP-I

Unpack, inspect and lay the parts on a clean, flat, soft surface to avoid marring the wood.



STEP-II

Match numbers stamped on the LEGS to the corresponding numbers stamped on the corner braces of the TABLE TOP, insert the LEGS into position as shown in the assembly photos. Slide the split washers followed by the solid washers over the threads and secure with the nuts by hand until they stop.



STEP-III

Using a proper wrench, tighten the nuts slowly. Please take care not to over tighten as it may damage the item. Tighten until legs do not wobble. You should always upright the table with 2 people, tilting the table on its side and putting the weight on 2 legs to upright could cause damage to the table.

Lift table straight up, flip over and then set it down.

IF YOU HAVE ANY QUESTIONS REGARDING THE ASSEMBLY OF YOUR KINGSLEY-BATE FURNITURE, PLEASE CONTACT THE KINGSLEY-BATE DEALER NEAREST TO YOUR OR KINGSLEY-BATE DIRECTLY. WE THANK YOU FOR CHOOSING OUR FURNITURE.

** KINGSLEY-BATE WILL NOT TAKE RESPONSIBILITY FOR DAMAGE IF THESE INSTRUCTIONS ARE NOT FOLLOWED PROPERLY*