

CHANDELIERS + PENDANTS



Name: NAPLES OVAL CHANDELIER

Item Number: LCO-243

Description: The Naples Chandelier is inspired by vintage Floridian designs with an art deco influence. The individually cut steel palm fronds are assembled around eight candelabra-style bulbs with beeswax candle covers that emanate a beautiful, soft glow. The Naples Oval Chandelier is a true statement piece.

Dimensions: 63"L x 33"W x 10"H

Canopy: 6" Round

Material: Steel

Bulb/Wattage: 8/40C

Shown In: Spartina

Finishes: Our light fixture finishes are designed to be as lively and ever-changing as the Lowcountry landscape itself. Providing depth and character to your custom design, our finishes reflect the unique beauty of the coastal landscape and produce a beautiful, natural patina as they age. Our nature-inspired finishes are truly a living art and not only protect your piece, but create a more beautiful luster with time.



Name: NAPLES CHANDELIER

Item Number: LCO-242

Description: The Naples Chandelier is inspired by vintage Floridian designs with an art deco influence. The individually cut steel palm fronds are assembled around eight candelabra-style bulbs with beeswax candle covers that emanate a beautiful, soft glow.

Dimensions: 39" DIA x 10"H

Canopy: 6" Round

Material: Steel

Bulb/Wattage: 8/40C

Shown In: Palmetto

Finishes: Our light fixture finishes are designed to be as lively and ever-changing as the Lowcountry landscape itself. Providing depth and character to your custom design, our finishes reflect the unique beauty of the coastal landscape and produce a beautiful, natural patina as they age. Our nature-inspired finishes are truly a living art and not only protect your piece, but create a more beautiful luster with time.



Name: WEXFORD CHANDELIER

Item Number: LCO-245

Description: The Wexford Chandelier's airy silhouette offers low-key elegance with a big impact. The clean lines and curved arches pair beautifully with the 12 tall candelabra-style beeswax candle covers. This transitional piece is a true statement.

Dimensions: 60"L x 34"W x 36"H

Canopy: 5" x 8" Oval

Material: Steel

Bulb/Wattage: 12/40C

Shown In: Antique Platinum

Finishes: Our light fixture finishes are designed to be as lively and ever-changing as the Lowcountry landscape itself. Providing depth and character to your custom design, our finishes reflect the unique beauty of the coastal landscape and produce a beautiful, natural patina as they age. Our nature-inspired finishes are truly a living art and not only protect your piece, but create a more beautiful luster with time.



Name: WINDSTAR PENDANT

Item Number: LCO-246

Description: Inspired by the marsh grass that is quintessential low country, the Windstar Pendant is accentuated with a steel rondelle at it's base. With four candelbra-style bulbs and beeswax candle covers, the Windstar Pendant offers beautiful soft elegance.

Dimensions: 24" W x 24"H

Canopy: 5" x 8" Oval

Material: Steel

Bulb/Wattage: 4/40C

Shown In: Antique Platinum and Palmetto

Finishes: Our light fixture finishes are designed to be as lively and ever-changing as the Lowcountry landscape itself. Providing depth and character to your custom design, our finishes reflect the unique beauty of the coastal landscape and produce a beautiful, natural patina as they age. Our nature-inspired finishes are truly a living art and not only protect your piece, but create a more beautiful luster with time.



Name: GRANDE LAUREL BAY CHANDELIER

Item Number: LCO-043-GRANDE

Description: The gracefulness of the Grande Laurel Bay Chandelier makes it a wonderful selection representing elegant Lowcountry style. Beautiful in any room design, it can be made in various sizes provided and proportions are not compromised. It is available in all of our LCO custom finishes and shown with sixteen candelabra-style beeswax candle covers.

Dimensions: 75" DIA x 86"H

Canopy: 6" Round

Material: Steel

Bulb/Wattage: 16/40C

Shown In: Old Gold

Finishes: Our light fixture finishes are designed to be as lively and ever-changing as the Lowcountry landscape itself. Providing depth and character to your custom design, our finishes reflect the unique beauty of the coastal landscape and produce a beautiful, natural patina as they age. Our nature-inspired finishes are truly a living art and not only protect your piece, but create a more beautiful luster with time.



Name: THREE-TIER LAUREL BAY CHANDELIER

Item Number: LCO-034

Description: The exquisite Three-Tier Laurel Bay Chandelier is draped in crystal quartz and natural oyster shells. The gracefulness makes it a wonderful selection representing elegant Lowcountry style. Beautiful in any room design, it can be made in various sizes provided and proportions are not compromised. It is available in all of our LCO custom finishes.

Dimensions: 48"DIA x 53"H

Canopy: 6" Round

Material: Steel

Bulb/Wattage: 16/40C

Shown In: Pearl Quartz with Crystal Accent

Finishes: Our light fixture finishes are designed to be as lively and ever-changing as the Lowcountry landscape itself. Providing depth and character to your custom design, our finishes reflect the unique beauty of the coastal landscape and produce a beautiful, natural patina as they age. Our nature-inspired finishes are truly a living art and not only protect your piece, but create a more beautiful luster with time.



Name: LAUREL BAY CHANDELIER QUARTZ CRYSTAL

Item Number: LCO-043-QC

Description: The graceful swooping lines of the natural quartz crystal chandelier represent the casual elegance of the low country. Available also in shell and crystal accents. It can be customized in various sizes and finishes.

Dimensions: 43"DIA x 43"H

Canopy: 6" Round

Material: Steel

Bulb/Wattage: 12/40C

Shown In: Darkened Bronze

Finishes: Our light fixture finishes are designed to be as lively and ever-changing as the Lowcountry landscape itself. Providing depth and character to your custom design, our finishes reflect the unique beauty of the coastal landscape and produce a beautiful, natural patina as they age. Our nature-inspired finishes are truly a living art and not only protect your piece, but create a more beautiful luster with time.



Name: LAUREL BAY CHANDELIER WITH SHELL AND CRYSTAL

Item Number: LCO-043

Description: The Laurel Bay Chandelier is our most beloved light fixture. The graceful design is a piece of living art in your home. Curved steel arms draped with natural oysters and elegant crystal quartz nuggets. This is quintessential Lowcountry style.

Dimensions: 43"DIA x 43"H

Canopy: 6" Round

Material: Steel, Shell and Quartz Crystal Nuggets

Bulb/Wattage: 12/40C

Shown In: Antique Platinum

Finishes: Our light fixture finishes are designed to be as lively and ever-changing as the Lowcountry landscape itself. Providing depth and character to your custom design, our finishes reflect the unique beauty of the coastal landscape and produce a beautiful, natural patina as they age. Our nature-inspired finishes are truly a living art and not only protect your piece, but create a more beautiful luster with time.



Name: LAUREL BAY PENDANT

Item Number: LCO-119

Description: The Laurel Bay Pendant with natural oyster shells and quartz crystals is an inspiration from the Laurel Bay larger chandelier. This top tier of the Laurel Bay chandelier has been designed for smaller spaces.

Dimensions: 24"DIA x 25"H

Canopy: 6" Round

Material: Steel

Bulb/Wattage: 4/40C

Shown In: Antique White

Finishes: Our light fixture finishes are designed to be as lively and ever-changing as the Lowcountry landscape itself. Providing depth and character to your custom design, our finishes reflect the unique beauty of the coastal landscape and produce a beautiful, natural patina as they age. Our nature-inspired finishes are truly a living art and not only protect your piece, but create a more beautiful luster with time.



Name: LARGE EMPIRE OYSTER SHELL CHANDELIER

Item Number: LCO-001-LG

Description: The Large Empire has natural oyster shells gathered off the Georgia coast. The handcrafted steel frame is available in a variety of finishes. This piece is a fine example of a Lowcountry fixture made with the assist of nature. One of our most popular chandeliers, it is crafted in the inviting Lowcountry style.

Dimensions: 42"DIA x 642"H

Canopy: 6" Round

Material: Steel

Bulb/Wattage: 6/40C

Shown In: Sand Dollar Finish

Finishes: Our light fixture finishes are designed to be as lively and ever-changing as the Lowcountry landscape itself. Providing depth and character to your custom design, our finishes reflect the unique beauty of the coastal landscape and produce a beautiful, natural patina as they age. Our nature-inspired finishes are truly a living art and not only protect your piece, but create a more beautiful luster with time.



Name: MEDIUM EMPIRE OYSTER SHELL CHANDELIER

Item Number: LCO-001-MD

Description: The Medium Empire has natural oyster shells gathered off the Georgia coast. The handcrafted steel frame is available in a variety of finishes. This piece is a fine example of a Lowcountry fixture made with the assist of nature. One of our most popular chandeliers, it is crafted in the inviting low country style.

Dimensions: 32"DIA x 42"H

Canopy: 6" Round

Material: Steel

Bulb/Wattage: 6/40C

Shown In: Sand Dollar Finish

Finishes: Our light fixture finishes are designed to be as lively and ever-changing as the Lowcountry landscape itself. Providing depth and character to your custom design, our finishes reflect the unique beauty of the coastal landscape and produce a beautiful, natural patina as they age. Our nature-inspired finishes are truly a living art and not only protect your piece, but create a more beautiful luster with time.



Name: SMALL EMPIRE OYSTER SHELL CHANDELIER

Item Number: LCO-001-SM

Description: The Small Empire has natural oyster shells gathered off the Georgia coast. The handcrafted steel frame is available in a variety of finishes. This piece is a fine example of a Lowcountry fixture made with the assist of nature. It is one of our most popular chandeliers the Lowcountry style and flair. Also, see the Empire in Crystal. Available in Small, Medium, and Large sizes to fit your room.

Dimensions: 26"DIA x 32"H

Canopy: 6" Round

Material: Steel Steel

Bulb/Wattage: 6/40C

Shown In: Darkened Bronze

Finishes: Our light fixture finishes are designed to be as lively and ever-changing as the Lowcountry landscape itself. Providing depth and character to your custom design, our finishes reflect the unique beauty of the coastal landscape and produce a beautiful, natural patina as they age. Our nature-inspired finishes are truly a living art and not only protect your piece, but create a more beautiful luster with time.



Name: SMALL EMPIRE ALL CRYSTAL CHANDELIER

Item Number: LCO-001-SM-QC

Description: The Small Crystal Empire with quartz crystal nuggets is handcrafted in steel with an antique white finish. The bobeches are made of darkened copper. It is one of our most popular chandeliers the Lowcountry style and flair.

Dimensions: 26"DIA x 32"H

Canopy: 6" Round

Material: Steel

Bulb/Wattage: 6/40C

Shown In: Black

Finishes: Our light fixture finishes are designed to be as lively and ever-changing as the Lowcountry landscape itself. Providing depth and character to your custom design, our finishes reflect the unique beauty of the coastal landscape and produce a beautiful, natural patina as they age. Our nature-inspired finishes are truly a living art and not only protect your piece, but create a more beautiful luster with time.



Name: SHELL BOWL WITH BANDS CHANDELIER

Item Number: LCO-026

Description: The Shell Bowl with Bands chandelier is quite the statement piece. The piece is large and absolutely stunning. With the support of a band and chains, it offers a breathtaking focal point in any room.

Dimensions: 58"DIA x 44"H

Canopy: 6" Round

Material: Steel

Bulb/Wattage: 10/40C

Shown In: Darkened Bronze

Finishes: Our light fixture finishes are designed to be as lively and ever-changing as the Lowcountry landscape itself. Providing depth and character to your custom design, our finishes reflect the unique beauty of the coastal landscape and produce a beautiful, natural patina as they age. Our nature-inspired finishes are truly a living art and not only protect your piece, but create a more beautiful luster with time.



Name: SHELL BOWL CHANDELIER

Item Number: LCO-024

Description: The Shell Bowl has a unique bowl design made from natural oyster shells gathered off the coast of Georgia. Steel rods connect to a canopy that leads to chain for on-site adjustment. Painted metal candle sleeves match the finish.

Dimensions: 28"DIA x 36"H

Canopy: 6" Round

Material: Steel, Oyster Shell

Bulb/Wattage: 6/40C

Shown In: Darkened Bronze

Finishes: Our light fixture finishes are designed to be as lively and ever-changing as the Lowcountry landscape itself. Providing depth and character to your custom design, our finishes reflect the unique beauty of the coastal landscape and produce a beautiful, natural patina as they age. Our nature-inspired finishes are truly a living art and not only protect your piece, but create a more beautiful luster with time.



Name: THREE TIER SHELL CHANDELIER

Item Number: LCO-113

Description: The Three Tier Shell Chandelier with natural oyster shells is a show stopper. All shells are hand-selected and the steel structure for the chandelier is handcrafted by artisans. Available in all LCO finishes.

Dimensions: 36"DIA x 25"H

Canopy: 6" Round Sliding

Material: Steel

Bulb/Wattage: 12/40C

Shown In: Darkened Bronze

Finishes: Our light fixture finishes are designed to be as lively and ever-changing as the Lowcountry landscape itself. Providing depth and character to your custom design, our finishes reflect the unique beauty of the coastal landscape and produce a beautiful, natural patina as they age. Our nature-inspired finishes are truly a living art and not only protect your piece, but create a more beautiful luster with time.



Name: WATERFALL CHANDELIER

Item Number: LCO-089

Description: The Waterfall Island Chandelier is a showstopper. The rectangular shape is adorned with natural oyster shells. The cascading shells make up an alluring sculpture with a stunning luminesce.

Dimensions: 36"L x 18"W x 16"H + STEMS

Canopy: 5" x 14" Sliding

Material: Steel/Oyster Shell

Bulb/Wattage: 3/100M

Shown In: Darkened Bronze

Finishes: Our light fixture finishes are designed to be as lively and ever-changing as the Lowcountry landscape itself. Providing depth and character to your custom design, our finishes reflect the unique beauty of the coastal landscape and produce a beautiful, natural patina as they age. Our nature-inspired finishes are truly a living art and not only protect your piece, but create a more beautiful luster with time.



Name: WAGON WHEEL WITH OYSTER CLUSTERS

Item Number: LCO-025

Description: The Wagon Wheel Shell Chandelier is unique because of its natural oyster clusters incorporated inside the round shape. The chandelier is available in all finishes except brass and copper. Sizes are customizable. Available in beeswax candle covers or metal candle sleeves.

Dimensions: 29"DIA x 39"H

Canopy: 6" Round

Material: Steel

Bulb/Wattage: 5/40C

Shown In: Antique White

Finishes: Our light fixture finishes are designed to be as lively and ever-changing as the Lowcountry landscape itself. Providing depth and character to your custom design, our finishes reflect the unique beauty of the coastal landscape and produce a beautiful, natural patina as they age. Our nature-inspired finishes are truly a living art and not only protect your piece, but create a more beautiful luster with time.



Name: SHELL BELL PENDANT

Item Number: LCO-110

Description: The handcrafted Shell Bell Pendant has graceful drops of natural oyster shells that gather together to fit delicately into a bottom band and finished with a sphere. The frame is available in various finishes.

Dimensions: 16" DIA x 25"H

Canopy: 6" Round

Material: Steel

Bulb/Wattage: 3/40C

Shown In: Antique Platinum

Finishes: Our light fixture finishes are designed to be as lively and ever-changing as the Lowcountry landscape itself. Providing depth and character to your custom design, our finishes reflect the unique beauty of the coastal landscape and produce a beautiful, natural patina as they age. Our nature-inspired finishes are truly a living art and not only protect your piece, but create a more beautiful luster with time.



Name: DOUBLE SHELL DRUM

Item Number: LCO-015-DBL

Description: The Double Shell Drum is created with authentic oyster shells gathered off the coast of Georgia. Handcrafted in steel and one of a kind natural oyster shells. A popular use is over kitchen islands. It is also available in Quartz Crystal Nuggets.

Dimensions: 60"L X 16"W x 24"H + STEM

Canopy: 6" Round Sliding

Material: Steel

Bulb/Wattage: 6/40C

Shown In: Ocean Mist

Finishes: Our light fixture finishes are designed to be as lively and ever-changing as the Lowcountry landscape itself. Providing depth and character to your custom design, our finishes reflect the unique beauty of the coastal landscape and produce a beautiful, natural patina as they age. Our nature-inspired finishes are truly a living art and not only protect your piece, but create a more beautiful luster with time.



Name: SHELL DRUM PENDANT

Item Number: LCO-015

Description: The handcrafted Shell Drum Pendant with a decorative bulb cluster and authentic oyster shells gathered off the coast of Georgia is flexible when presented a variety of themes in room design. This drum is also available quartz nugget crystals. One of the most popular lighting fixtures in the LCO collections.

Dimensions: 16" DIA X 20"H

Canopy: 6" Round

Material: Steel

Bulb/Wattage: 3/40C

Shown In: Ocean Mist

Finishes: Our light fixture finishes are designed to be as lively and ever-changing as the Lowcountry landscape itself. Providing depth and character to your custom design, our finishes reflect the unique beauty of the coastal landscape and produce a beautiful, natural patina as they age. Our nature-inspired finishes are truly a living art and not only protect your piece, but create a more beautiful luster with time.



Name: SHELL DRUM PENDANT WITH BOTTOM BAND

Item Number: LCO-069

Description: The Shell Drum Pendant with Bottom Band lends itself to another very versatile handcrafted fixture. It is versatile in size, a variety of LCO custom finishes, and applications. The top and bottom metal bands accent the natural oyster shells.

Dimensions: 10"DIA x 20"H

Canopy: 6" Round

Material: Steel

Bulb/Wattage: 1/100M

Shown In: Aged Copper

Finishes: Our light fixture finishes are designed to be as lively and ever-changing as the Lowcountry landscape itself. Providing depth and character to your custom design, our finishes reflect the unique beauty of the coastal landscape and produce a beautiful, natural patina as they age. Our nature-inspired finishes are truly a living art and not only protect your piece, but create a more beautiful luster with time.



Name: MINI SHELL DRUM PENDANT

Item Number: LCO-015-MINI

Description: The Mini Shell Drum Pendant with oyster shells gathered off the coast of Georgia is also available in quartz crystal nuggets. Its popular use is over kitchen islands as shown. It is available in all LCO custom finishes. Not available in Brass or Copper.

Dimensions: 8" DIA x 16" OAH

Canopy: 6" Round

Material: Steel

Bulb/Wattage: 1/100A

Shown In: Gold

Finishes: Our light fixture finishes are designed to be as lively and ever-changing as the Lowcountry landscape itself. Providing depth and character to your custom design, our finishes reflect the unique beauty of the coastal landscape and produce a beautiful, natural patina as they age. Our nature-inspired finishes are truly a living art and not only protect your piece, but create a more beautiful luster with time.



Name: BOX LANTERN WITH SHELL CYLINDER

Item Number: LCO-042

Description: The Box Lantern with Shell Cylinder insert combines two beautiful lighting fixtures, the simplicity of the box with a beautiful scroll top and the shell drum within. The drum can be strung with quartz crystal nuggets as well as oyster shells. Available in a variety of LCO custom finishes.

Dimensions: 22"SQ x 40"H (Shell Cylinder 12" DIA)

Canopy: 6" Round

Material: Steel

Bulb/Wattage: 6/40C

Shown In: Antique Gold:

Finishes: Our light fixture finishes are designed to be as lively and ever-changing as the Lowcountry landscape itself. Providing depth and character to your custom design, our finishes reflect the unique beauty of the coastal landscape and produce a beautiful, natural patina as they age. Our nature-inspired finishes are truly a living art and not only protect your piece, but create a more beautiful luster with time.



Name: BOX LANTERN WITH CRYSTAL CYLINDER

Item Number: LCO-042-QC

Description: The Box Lantern with Crystal Cylinder insert is an example of how color can change our emotional appeal and enhance a chandelier. The fixtures stunning in a silver steel frame with the cylinder strung with natural quartz crystal nuggets.

Dimensions: 22"SQ x 40"H (Shell Cylinder 12" DIA)

Canopy: 6" Round

Material: Steel

Bulb/Wattage: 6/40C

Shown In: Silver

Finishes: Our light fixture finishes are designed to be as lively and ever-changing as the Lowcountry landscape itself. Providing depth and character to your custom design, our finishes reflect the unique beauty of the coastal landscape and produce a beautiful, natural patina as they age. Our nature-inspired finishes are truly a living art and not only protect your piece, but create a more beautiful luster with time.



Name: SCROLL ARM CHANDELIER

Item Number: LCO-027

Description: The Crystal Scroll Arm Chandelier encompasses ornamental scroll arms and delicate quartz crystals. Also customizable in oyster shells. Available in all LCO custom finishes except brass and copper. Shown with real beeswax candle covers.

Dimensions: 36"DIA x 42"H

Canopy: 6" Round

Material: Steel

Bulb/Wattage: 6/40C

Shown In: Sand Dollar

Finishes: Our light fixture finishes are designed to be as lively and ever-changing as the Lowcountry landscape itself. Providing depth and character to your custom design, our finishes reflect the unique beauty of the coastal landscape and produce a beautiful, natural patina as they age. Our nature-inspired finishes are truly a living art and not only protect your piece, but create a more beautiful luster with time.



Name: RECTANGLE WITH SHELL CHANDELIER

Item Number: LCO-170

Description: The Shell and Crystal rectangular box chandelier with the gold finish is richly adorned with natural oyster shells from the Georgia coast and amber rock crystal nuggets.

Dimensions: 36"L x 15"W x 15"H + 12" STEM + CHAIN

Canopy: 6" x 22" Rectangular

Material: Steel and Natural Oysters

Bulb/Wattage: 5/40C

Shown In: Sand Dollar

Finishes: Our light fixture finishes are designed to be as lively and ever-changing as the Lowcountry landscape itself. Providing depth and character to your custom design, our finishes reflect the unique beauty of the coastal landscape and produce a beautiful, natural patina as they age. Our nature-inspired finishes are truly a living art and not only protect your piece, but create a more beautiful luster with time.



Name: DOME TOP PENDANT

Item Number: LCO-168

Description: The Dome Top pendant is adorned with natural hand-selected oyster shells from the Georgia coast and amber rock crystal nuggets. The graceful dome top and golden tones warm up the room. Great as a pair over an island. Available in all LCO finishes.

Dimensions: 12"DIA x 24"H

Canopy: 6" Round

Material: Steel

Bulb/Wattage: 3/40C

Shown In: Gold

Finishes: Our light fixture finishes are designed to be as lively and ever-changing as the Lowcountry landscape itself. Providing depth and character to your custom design, our finishes reflect the unique beauty of the coastal landscape and produce a beautiful, natural patina as they age. Our nature-inspired finishes are truly a living art and not only protect your piece, but create a more beautiful luster with time.



Name: CHARLESTON PENDANT

Item Number: LCO-212

Description: The Charleston Pendant is a quintessential coastal piece that adds interest to any design. The hand-selected natural oyster shells are clustered to create a hanging sculpture.

Dimensions: 18"DIA X 20"H

Canopy: 6" Round

Material: Steel and Natural Oysters

Bulb/Wattage: 4/40C

Shown In: Antique Platinum

Finishes: Our light fixture finishes are designed to be as lively and ever-changing as the Lowcountry landscape itself. Providing depth and character to your custom design, our finishes reflect the unique beauty of the coastal landscape and produce a beautiful, natural patina as they age. Our nature-inspired finishes are truly a living art and not only protect your piece, but create a more beautiful luster with time.



Name: SHELL DRUM 5 LIGHT PENDANT

Item Number: LCO-200

Description: The Shell Drum Chandelier with Five Lights is a charming natural cylinder light fixture draped with oyster shells collected from the Carolina shores. Four elegant beeswax-covered candles surround the piece. This is natural beauty at its best.

Dimensions: 23" DIA (drum 14" dia x 18"H) x 28"H

Canopy: 6" Round

Material: Steel with Natural Oyster Shells

Bulb/Wattage: 4/40C-1/100M

Shown In: Antique Silver

Finishes: Our light fixture finishes are designed to be as lively and ever-changing as the Lowcountry landscape itself. Providing depth and character to your custom design, our finishes reflect the unique beauty of the coastal landscape and produce a beautiful, natural patina as they age. Our nature-inspired finishes are truly a living art and not only protect your piece, but create a more beautiful luster with time.



Name: 2 TIER CIRCULAR TUBING CHANDELIER

Item Number: LCO-175-2 TIER

Description: The Circular Steel Tubing Chandelier is such a favorite fixture amongst our Designers that we added another tier just to for larger spaces. This chandelier features a unique metal circular tubing frame with natural quartz crystal accents. It's a statement piece for any design.

Dimensions: 63"DIA X 60"H

Canopy: 6" Round

Material: Steel Tubing Frame with Natural Quartz Crystals

Bulb/Wattage: 20/40C

Shown In: Antique White

Finishes: Our light fixture finishes are designed to be as lively and ever-changing as the Lowcountry landscape itself. Providing depth and character to your custom design, our finishes reflect the unique beauty of the coastal landscape and produce a beautiful, natural patina as they age. Our nature-inspired finishes are truly a living art and not only protect your piece, but create a more beautiful luster with time.



Name: CIRCULAR TUBING CHANDELIER

Item Number: LCO-175

Description: The Circular Tubing Chandelier is popular for its candelabra arms on the tubing accented with delicate spheres and natural quartz crystal accents. The steel tubing and quartz crystal accents work well in many of our LCO finishes.

Dimensions: 36"DIA. x 29"H

Canopy: 6" Round

Material: Steel Tubing Frame with Natural Quartz Crystals

Bulb/Wattage: 12/40C

Shown In: Antique Silver

Finishes: Our light fixture finishes are designed to be as lively and ever-changing as the Lowcountry landscape itself. Providing depth and character to your custom design, our finishes reflect the unique beauty of the coastal landscape and produce a beautiful, natural patina as they age. Our nature-inspired finishes are truly a living art and not only protect your piece, but create a more beautiful luster with time.



Name: OVAL WITH QUARTZ CRYSTAL CHANDELIER

Item Number: LCO-179

Description: The Oval Crystal Chandelier is an example of Lowcountry elegance at it's finest. The oval with natural crystal swag hang gracefully and create an eye-catching glow, particularly in a dining setting. We see this fixture used in rooms with high ceilings, grand foyers, or open stairwells.

Dimensions: 34"W x 46"L x 46"H

Canopy: 6" Round

Material: Steel / Crystal

Bulb/Wattage: 8/40C

Shown In: Antique Silver

Finishes: Our light fixture finishes are designed to be as lively and ever-changing as the Lowcountry landscape itself. Providing depth and character to your custom design, our finishes reflect the unique beauty of the coastal landscape and produce a beautiful, natural patina as they age. Our nature-inspired finishes are truly a living art and not only protect your piece, but create a more beautiful luster with time.



Name: DOUBLE QUARTZ CRYSTAL RING CHANDELIER

Item Number: LCO-048-QC

Description: The crystal double ring is reminiscent of a mystical dream catcher. This piece of art is accented with quartz nugget crystals. It can also be customized with oyster shells. It is available in a variety of sizes and LCO custom finishes.

Dimensions: 27"DIA x 32"H

Canopy: 6" Round

Material: Steel

Bulb/Wattage: 4/40C

Shown In: Pearl Finish

Finishes: Our light fixture finishes are designed to be as lively and ever-changing as the Lowcountry landscape itself. Providing depth and character to your custom design, our finishes reflect the unique beauty of the coastal landscape and produce a beautiful, natural patina as they age. Our nature-inspired finishes are truly a living art and not only protect your piece, but create a more beautiful luster with time.



Name: CRYSTAL TOP LANTERN

Item Number: LCO-169

Description: The Crystal Top Lantern with four crystal strands is an impressive piece. The benchmade steel frame is Available in Various Finishes and customizable in size.

Dimensions: 24"SQ TOP x 42"H

Canopy: 6" Round

Material: Steel and Natural Crystal

Bulb/Wattage: 4/40C

Shown In: Antique Platinum

Finishes: Our light fixture finishes are designed to be as lively and ever-changing as the Lowcountry landscape itself. Providing depth and character to your custom design, our finishes reflect the unique beauty of the coastal landscape and produce a beautiful, natural patina as they age. Our nature-inspired finishes are truly a living art and not only protect your piece, but create a more beautiful luster with time.



Name: RECTANGULAR CRYSTAL PENDANT

Item Number: LCO-166

Description: This Pendant with crystal nuggets lends itself to a beautiful geometric solution. The clear crystal nuggets soften the angular lines. Made of steel, the square pendant can be finished in any of Lowcountry Original's custom finishes. The rectangular link chain also adds a special angular touch.

Dimensions: 9"SQ x 17"H

Canopy: 6" Square

Material: Steel and Quartz Crystal

Bulb/Wattage: 1/100M

Shown In: Black

Finishes: Our light fixture finishes are designed to be as lively and ever-changing as the Lowcountry landscape itself. Providing depth and character to your custom design, our finishes reflect the unique beauty of the coastal landscape and produce a beautiful, natural patina as they age. Our nature-inspired finishes are truly a living art and not only protect your piece, but create a more beautiful luster with time.



Name: TWO TIERED BELFAIR

Item Number: LCO-234

Description: The Belfair two-tiered chandelier, not one but two graceful tiers of elegant swooping arms that provide functional rings and stems. The natural beeswax candles covers and custom finish encompass the true Lowcountry style.

Dimensions: 75"DIA x 60"H

Canopy: 6" Round

Material: Steel

Bulb/Wattage: 16/40C

Shown In: Black

Finishes: Our light fixture finishes are designed to be as lively and ever-changing as the Lowcountry landscape itself. Providing depth and character to your custom design, our finishes reflect the unique beauty of the coastal landscape and produce a beautiful, natural patina as they age. Our nature-inspired finishes are truly a living art and not only protect your piece, but create a more beautiful luster with time.



Name: DAUFUSKIE CHANDELIER

Item Number: LCO-017

Description: The Daufuskie Chandelier has returned with a new look. The chandelier is an artful piece with long graceful arms and cord-like grasses that mimic our natural surroundings. This light has a dramatic elegance that is sure to enhance your home. The chandelier is customizable in scale and finishes to complement your design.

Dimensions: 64"L x 38"W x 24"H (Grass + Stem)

Canopy: 6" Round Sliding

Material: Steel

Bulb/Wattage: 8/40C

Shown In: Darkened Bronze, Old Gold

Finishes: Our light fixture finishes are designed to be as lively and ever-changing as the Lowcountry landscape itself. Providing depth and character to your custom design, our finishes reflect the unique beauty of the coastal landscape and produce a beautiful, natural patina as they age. Our nature-inspired finishes are truly a living art and not only protect your piece, but create a more beautiful luster with time.



Name: BELFAIR CHANDELIER

Item Number: LCO-156

Description: The Belfair is one of the more graceful chandeliers in our collection. The elegant swooping arms, with the functional rings and stems and beeswax candles covers encompass the true Lowcountry style.

Dimensions: 75"W x 33"H

Canopy: 6" Round

Material: Steel

Bulb/Wattage: 8/40C

Shown In: Darkened Bronze

Finishes: Our light fixture finishes are designed to be as lively and ever-changing as the Lowcountry landscape itself. Providing depth and character to your custom design, our finishes reflect the unique beauty of the coastal landscape and produce a beautiful, natural patina as they age. Our nature-inspired finishes are truly a living art and not only protect your piece, but create a more beautiful luster with time.



Name: BELFAIR CHANDELIER WITH LEAVES

Item Number: LCO-156 LEAVES

Description: The Belfair with leaves is the updated version of our graceful Belfair Chandelier. The exquisite swopping arms with hand forged leaves and wax candles add elegance and charm true of the Lowcountry style. This fixture is equally beautiful with and without shades.

Dimensions: 75"W x 33"H

Canopy: 6" Round

Material: Steel

Bulb/Wattage: 8/40C

Shown In: Antique Platinum

Finishes: Our light fixture finishes are designed to be as lively and ever-changing as the Lowcountry landscape itself. Providing depth and character to your custom design, our finishes reflect the unique beauty of the coastal landscape and produce a beautiful, natural patina as they age. Our nature-inspired finishes are truly a living art and not only protect your piece, but create a more beautiful luster with time.



Name: LARGE ARK OVAL BASKET

Item Number: LCO-019-LG-OVAL

Description: The Large Ark Oval Basket is both delicate and mighty. The bold oval design sets it apart from all the other fixtures. Available in all LCO custom finishes except Brass or Copper.

Dimensions: 75"L x 40"W x 30"H

Canopy: 5" x 14" Rectangular

Material: Steel

Bulb/Wattage: 14/25C

Shown In: Antique White

Finishes: Our light fixture finishes are designed to be as lively and ever-changing as the Lowcountry landscape itself. Providing depth and character to your custom design, our finishes reflect the unique beauty of the coastal landscape and produce a beautiful, natural patina as they age. Our nature-inspired finishes are truly a living art and not only protect your piece, but create a more beautiful luster with time.



Name: SMALL ARK OVAL BASKET

Item Number: LCO-019-SM-OVAL

Description: The handcrafted Small Ark Oval Basket is great over the island or any application that requires a rectangular shape. Its rustic and graceful shape lends itself well to coastal living. Available in all LCO custom finishes except brass and copper. Shown with real beeswax candle covers.

Dimensions: 60"L x 32"W x 29"H

Canopy: 5" x 14" Rectangular

Material: Steel

Bulb/Wattage: 14/25C

Shown In: Ocean Mist

Finishes: Our light fixture finishes are designed to be as lively and ever-changing as the Lowcountry landscape itself. Providing depth and character to your custom design, our finishes reflect the unique beauty of the coastal landscape and produce a beautiful, natural patina as they age. Our nature-inspired finishes are truly a living art and not only protect your piece, but create a more beautiful luster with time.



Name: MARSH GRASS GRANDE CHANDELIER

Item Number: LCO-077-GRANDE

Description: The Marsh Grass Grande Chandelier is a graceful, artistic lighting fixture for your abode. Grande in size and adorned with natural oyster shells for added texture and beauty. Ideal for grand foyers and rooms with a view. A refined piece for any design.

Dimensions: 51"DIA x 60"H

Canopy: 6" Round

Material: Steel

Bulb/Wattage: 6/40C

Shown In: Old Gold and Darkened Bronze

Finishes: Our light fixture finishes are designed to be as lively and ever-changing as the Lowcountry landscape itself. Providing depth and character to your custom design, our finishes reflect the unique beauty of the coastal landscape and produce a beautiful, natural patina as they age. Our nature-inspired finishes are truly a living art and not only protect your piece, but create a more beautiful luster with time.



Name: MARSH GRASS CHANDELIER

Item Number: LCO-077

Description: The Marsh Grass Grande Chandelier is a graceful, artistic lighting fixture for your home. Grand in size and adorned with natural oyster shells for added texture and beauty. Ideal for grand foyers and rooms with a view. A refined piece for any design.

Dimensions: 36"DIA x 45"H

Canopy: 6" Round

Material: Steel

Bulb/Wattage: 6/40C

Shown In: Palmetto and Rustic bronze

Finishes: Our light fixture finishes are designed to be as lively and ever-changing as the Lowcountry landscape itself. Providing depth and character to your custom design, our finishes reflect the unique beauty of the coastal landscape and produce a beautiful, natural patina as they age. Our nature-inspired finishes are truly a living art and not only protect your piece, but create a more beautiful luster with time.



Name: SEAGRASS CHANDELIER

Item Number: LCO-220

Description: The Seagrass Chandelier is a celebration of artful and majestic Southern luxury. A statement piece in any room with added movement and allure. Shown in the new palmetto finish with spartina gold accents.

Dimensions: 43"DIA X 41"H

Canopy: 6" Round

Material: Steel

Bulb/Wattage: 8/40C

Shown In: Palmetto and Spartina

Finishes: Our light fixture finishes are designed to be as lively and ever-changing as the Lowcountry landscape itself. Providing depth and character to your custom design, our finishes reflect the unique beauty of the coastal landscape and produce a beautiful, natural patina as they age. Our nature-inspired finishes are truly a living art and not only protect your piece, but create a more beautiful luster with time.



Name: C SHAPE MARSH GRASS CHANDELIER

Item Number: LCO-171

Description: This elegant Lowcountry inspired chandelier is a new take on the marsh grass with added details like quartz crystal. This fixture is perfect for foyer application.

Dimensions: 36"DIA x 412"H

Canopy: 6" Round

Material: Steel and Quartz Crystal

Bulb/Wattage: 4/40C

Shown In: Antique White

Finishes: Our light fixture finishes are designed to be as lively and ever-changing as the Lowcountry landscape itself. Providing depth and character to your custom design, our finishes reflect the unique beauty of the coastal landscape and produce a beautiful, natural patina as they age. Our nature-inspired finishes are truly a living art and not only protect your piece, but create a more beautiful luster with time.



Name: MARSHLAND CHANDELIER

Item Number: LCO-218

Description: The hand-hammered twig-like accents in the Marshland Chandelier are inspired by the Lowcountry marsh landscape. Natural beeswax candle covers take center stage and provide an exquisite glow. Available in various finishes. Shown in our new palmetto finish.

Dimensions: 42" L X 14" W X 32" Lantern + Chain

Canopy: 5" x 8" Rectangular

Material: Steel

Bulb/Wattage: 6/40C

Shown In: Palmetto and Darkened Bronze

Finishes: Our light fixture finishes are designed to be as lively and ever-changing as the Lowcountry landscape itself. Providing depth and character to your custom design, our finishes reflect the unique beauty of the coastal landscape and produce a beautiful, natural patina as they age. Our nature-inspired finishes are truly a living art and not only protect your piece, but create a more beautiful luster with time.



Name: OSPREY LANTERN

Item Number: LCO-213

Description: Our version of a Lowcountry lantern boasts hand-hammered twig-like accents. The natural beeswax candle covers take center stage and give off a beautiful glow. Available in various finishes.

Dimensions: 18"SQ X 22"H

Canopy: 6" Round

Material: Steel

Bulb/Wattage: 4/40C

Shown In: Old Gold

Finishes: Our light fixture finishes are designed to be as lively and ever-changing as the Lowcountry landscape itself. Providing depth and character to your custom design, our finishes reflect the unique beauty of the coastal landscape and produce a beautiful, natural patina as they age. Our nature-inspired finishes are truly a living art and not only protect your piece, but create a more beautiful luster with time.



Name: MARSH GRASS LANTERN

Item Number: LCO-150

Description: Handcrafted from steel, the Marsh Grass Lantern is inspired by the beautiful marsh grass that thrives in the Lowcountry marshland. Finished in antique green leaves and dark bronze, this square light fixture with its overlay of marsh grass leaves is true of the Lowcountry style and elegance.

Dimensions: 24"SQ x 27"H

Canopy: 6" Round

Material: Steel

Bulb/Wattage: 8/40C

Shown In: Darkened Bronze and Antique Green

Finishes: Our light fixture finishes are designed to be as lively and ever-changing as the Lowcountry landscape itself. Providing depth and character to your custom design, our finishes reflect the unique beauty of the coastal landscape and produce a beautiful, natural patina as they age. Our nature-inspired finishes are truly a living art and not only protect your piece, but create a more beautiful luster with time.



Name: LARGE OSPREY CHANDELIER

Item Number: LCO-216-LG

Description: The Large Osprey Chandelier is inspired by both nature and sculptural design with a simple organic form and woven steel nest-like twigs. Crafted for harmony and available in all LCO finishes.

Dimensions: 48"DIA X 48"H

Canopy: 6" Round

Material: Steel

Bulb/Wattage: 5/40C

Shown In: Antique Platinum

Finishes: Our light fixture finishes are designed to be as lively and ever-changing as the Lowcountry landscape itself. Providing depth and character to your custom design, our finishes reflect the unique beauty of the coastal landscape and produce a beautiful, natural patina as they age. Our nature-inspired finishes are truly a living art and not only protect your piece, but create a more beautiful luster with time.



Name: OSPREY SMALL CHANDELIER

Item Number: LCO-216 -SM

Description: The Small Osprey Chandelier is inspired by both nature and sculptural design with a simple organic form and woven steel nest-like twigs. Crafted for harmony and available in all LCO finishes.

Dimensions: 30"DIA X 36"H

Canopy: 6" Round

Material: Steel

Bulb/Wattage: 5/40C

Shown In: Osprey

Finishes: Our light fixture finishes are designed to be as lively and ever-changing as the Lowcountry landscape itself. Providing depth and character to your custom design, our finishes reflect the unique beauty of the coastal landscape and produce a beautiful, natural patina as they age. Our nature-inspired finishes are truly a living art and not only protect your piece, but create a more beautiful luster with time.



Name: OSPREY NEST SEMI FLUSH MOUNT

Item Number: LCO-216-SEMI

Description: The Osprey Nest Semi Flush Mount is inspired by both nature and sculptural design with a simple organic form and woven steel nest-like twigs. Crafted for harmony and available in all LCO finishes.

Dimensions: 54"DIA x 18"H

Canopy: 8" Round

Material: Steel

Bulb/Wattage: 6/40C

Shown In: Osprey

Finishes: Our light fixture finishes are designed to be as lively and ever-changing as the Lowcountry landscape itself. Providing depth and character to your custom design, our finishes reflect the unique beauty of the coastal landscape and produce a beautiful, natural patina as they age. Our nature-inspired finishes are truly a living art and not only protect your piece, but create a more beautiful luster with time.

Name: CHESTERFEILD CHANDELIER

Item Number: LCO-206

Description: The Chesterfield Chandelier channels an old-world fixture with a modern twist. The eight elegant swooping arms are met with a metal twist in the center of the fixture to create a unique finish. Accented in a 4" steel ball in spartina gold.

Dimensions: 51"DIA X 28"H

Canopy: 6" Round

Material: Steel

Bulb/Wattage: 8/40C

Shown In: Black and Spartina

Finishes: Our light fixture finishes are designed to be as lively and ever-changing as the Lowcountry landscape itself. Providing depth and character to your custom design, our finishes reflect the unique beauty of the coastal landscape and produce a beautiful, natural patina as they age. Our nature-inspired finishes are truly a living art and not only protect your piece, but create a more beautiful luster with time.





Name: MADISON CHANDELIER

Item Number: LCO-240

Description: The Madison Chandelier is stunning with its big, bold, and beautifully curved arms decorated with hand-forged artisan leaves. A sculptural lighting piece for your home.

Dimensions: 45"W (41"ARMS) x 38"H

Canopy: 6" Round

Material: Steel

Bulb/Wattage: 8/40C

Shown In: Antique Platinum and Palmetto

Finishes: Our light fixture finishes are designed to be as lively and ever-changing as the Lowcountry landscape itself. Providing depth and character to your custom design, our finishes reflect the unique beauty of the coastal landscape and produce a beautiful, natural patina as they age. Our nature-inspired finishes are truly a living art and not only protect your piece, but create a more beautiful luster with time.



Name: WAVE CHANDELIER

Item Number: LCO-189

Description: The Eight-Light wave chandelier receives its name for the graceful arms that reach out to the crystal teardrops accented with the crystal sphere at the bottom of the chandelier. Finished in Champagne Mist, it is available in all LCO custom colors and handcrafted by local artisans.

Dimensions: 62"DIA x 38"H

Canopy: 6" Round

Material: Steel with Quartz Crystal Teardrops

Bulb/Wattage: 8/40C

Shown In: Shown in Champagne Mist

Finishes: Our light fixture finishes are designed to be as lively and ever-changing as the Lowcountry landscape itself. Providing depth and character to your custom design, our finishes reflect the unique beauty of the coastal landscape and produce a beautiful, natural patina as they age. Our nature-inspired finishes are truly a living art and not only protect your piece, but create a more beautiful luster with time.



Name: ELONGATED ROUND BAR CHANDELIER

Item Number: LCO-180

Description: Build your room design around this beautiful ten light chandelier with oval accents. Finished in Antique Platinum this chandelier will be the outstanding focal point in any room. The 10 beeswax candle covers add to the uniqueness and graceful height of this fixture. Select any of the custom finishes from Lowcountry's collection. Not available in brass or copper.

Dimensions: 54"L x 15"W x 46"H

Canopy: 6" Round

Material: Steel

Bulb/Wattage: 10/40C

Shown In: Darkened Bronze

Finishes: Our light fixture finishes are designed to be as lively and ever-changing as the Lowcountry landscape itself. Providing depth and character to your custom design, our finishes reflect the unique beauty of the coastal landscape and produce a beautiful, natural patina as they age. Our nature-inspired finishes are truly a living art and not only protect your piece, but create a more beautiful luster with time.



Name: ELLIS ENLONGATED LANTERN

Item Number: LCO-241

Description: Our Ellis Enlongated Lantern light is inspired by modern design trends and is perfectly suited for kitchen islands and dining tables.

Dimensions: 48"L x 18"W x 40"H + CHAIN

Canopy: 5" x 20" RINGS 17.5" APART

Material: Steel

Bulb/Wattage: 8/40C

Shown In: Black and Antique Platinum

Finishes: Our light fixture finishes are designed to be as lively and ever-changing as the Lowcountry landscape itself. Providing depth and character to your custom design, our finishes reflect the unique beauty of the coastal landscape and produce a beautiful, natural patina as they age. Our nature-inspired finishes are truly a living art and not only protect your piece, but create a more beautiful luster with time.



Name: ELLIS SQUARE LANTERN

Item Number: LCO-235

Description: Our Ellis Square Lantern light is inspired by modern design trends. This clean and simple yet thoughtful design has all the right angles for your space.

Dimensions: 16" SQ x 20"W x 22"H + STEM

Canopy: 6" SQUARE SLIDING

Material: Steel

Bulb/Wattage: 4/40C

Shown In: White and Silver Box

Finishes: Our light fixture finishes are designed to be as lively and ever-changing as the Lowcountry landscape itself. Providing depth and character to your custom design, our finishes reflect the unique beauty of the coastal landscape and produce a beautiful, natural patina as they age. Our nature-inspired finishes are truly a living art and not only protect your piece, but create a more beautiful luster with time.



Name: ELLIS SQUARE CHANDELIER

Item Number: LCO-236

Description: Our Ellis Square Lantern chandelier is inspired by modern design trends. This clean and simple yet thoughtful design has all the right angles for your space.

Dimensions: 64"DIA + STEM

Canopy: 6" SQUARE SLIDING

Material: Steel

Bulb/Wattage: 6/40C

Shown In: Sea Salt

Finishes: Our light fixture finishes are designed to be as lively and ever-changing as the Lowcountry landscape itself. Providing depth and character to your custom design, our finishes reflect the unique beauty of the coastal landscape and produce a beautiful, natural patina as they age. Our nature-inspired finishes are truly a living art and not only protect your piece, but create a more beautiful luster with time.



Name: ELONGATED U CHANDELIER

Item Number: LCO-104

Description: The Elongated U Chandelier's charming geometric shaped arms give character to any space. The light fixture size lends itself well to lower ceilings. Good in a variety sizes and all LCO custom finishes..

Dimensions: 48"L x 24"W x 38"H

Canopy: 6" Round

Material: Steel

Bulb/Wattage: 8/40C

Shown In: Rustic Bronze

Finishes: Our light fixture finishes are designed to be as lively and ever-changing as the Lowcountry landscape itself. Providing depth and character to your custom design, our finishes reflect the unique beauty of the coastal landscape and produce a beautiful, natural patina as they age. Our nature-inspired finishes are truly a living art and not only protect your piece, but create a more beautiful luster with time.



Name: 8 LIGHT U CHANDELIER

Item Number: LCO-078

Description: The Eight-Light U Chandelier lends itself to a contemporary tone. Charming geometric shaped arms give character to any space. The light fixture size lends itself well to lower ceilings. Good in a variety sizes and all LCO custom finishes.

Dimensions: 36"SQ x 38"H

Canopy: 6" Round

Material: Steel

Bulb/Wattage: 8/40C

Shown In: Raw Steel

Finishes: Our light fixture finishes are designed to be as lively and ever-changing as the Lowcountry landscape itself. Providing depth and character to your custom design, our finishes reflect the unique beauty of the coastal landscape and produce a beautiful, natural patina as they age. Our nature-inspired finishes are truly a living art and not only protect your piece, but create a more beautiful luster with time.



Name: STAGGERED ARM CHANDELIER

Item Number: LCO-IH-158

Description: The Staggered Arm Chandelier with its rigid arms made of brass and center rod of steel is a mixed metal light fixture that is simply elegant. Used in either modern or traditional room design, it works well in either situation.

Dimensions: 36"SQ x 41"H

Canopy: 6" Round

Material: Brass or Steel

Bulb/Wattage: 8/40C

Shown In: Steel and Brass

Finishes: Our light fixture finishes are designed to be as lively and ever-changing as the Lowcountry landscape itself. Providing depth and character to your custom design, our finishes reflect the unique beauty of the coastal landscape and produce a beautiful, natural patina as they age. Our nature-inspired finishes are truly a living art and not only protect your piece, but create a more beautiful luster with time.



Name: BRASS 8 LIGHT CHANDELIER

Item Number: LCO-IH-502-2TIER

Description: The Brass 8 Light Chandelier shown in brass with brass candle covers completes the streamlined design. This modern chandelier has a stem and chain both customizable in length. Available in all LCO finishes.

Dimensions: 40"SQ X 39"H (TOP 23"SQ)

Canopy: 6" Round

Material: Steel

Bulb/Wattage: 8/40C

Shown In: Brass

Finishes: Our light fixture finishes are designed to be as lively and ever-changing as the Lowcountry landscape itself. Providing depth and character to your custom design, our finishes reflect the unique beauty of the coastal landscape and produce a beautiful, natural patina as they age. Our nature-inspired finishes are truly a living art and not only protect your piece, but create a more beautiful luster with time.



Name: BRASS 4 LIGHT CHANDELIER

Item Number: LCO-IH-502

Description: The Brass Four-Light Chandelier is a contemporary light fixture shown in brass with brass candle covers to complete the solid design. This streamlined chandelier has a stem and chain and offers a soft glow.

Dimensions: 37"SQ x 39"H

Canopy: 6" Round

Material: Brass

Bulb/Wattage: 4/40C

Shown In: Brass

Finishes: Our light fixture finishes are designed to be as lively and ever-changing as the Lowcountry landscape itself. Providing depth and character to your custom design, our finishes reflect the unique beauty of the coastal landscape and produce a beautiful, natural patina as they age. Our nature-inspired finishes are truly a living art and not only protect your piece, but create a more beautiful luster with time.



Name: DOUBLE CROSS BAR CHANDELIER

Item Number: LCO-IH-506

Description: The vintage long bar chandelier now with double cross bars adds interest, balance, and an even more luminous glow. Perfect for dining rooms and kitchen islands.

Dimensions: 60"L x 30"W x 36"H + CHAIN

Canopy: 6" X 24" CANOPY/BEESWAX CC

Material: Copper

Bulb/Wattage: 5/40C

Shown In: Darkened Copper

Finishes: Our light fixture finishes are designed to be as lively and ever-changing as the Lowcountry landscape itself. Providing depth and character to your custom design, our finishes reflect the unique beauty of the coastal landscape and produce a beautiful, natural patina as they age. Our nature-inspired finishes are truly a living art and not only protect your piece, but create a more beautiful luster with time.



Name: VINTAGE LONG BAR CHANDELIER

Item Number: LCO-IH-503

Description: The Vintage Long Bar Chandelier is elegant and simply stated with six staggered candle holders. The beauty within this fixture is that it works well in traditional or contemporary design applications.

Dimensions: 60"L x 3.5"W x 48"H + CHAIN

Canopy: 4" x 24" Rectangular

Material: Steel

Bulb/Wattage: 6/40C

Shown In: Old Gold

Finishes: Our light fixture finishes are designed to be as lively and ever-changing as the Lowcountry landscape itself. Providing depth and character to your custom design, our finishes reflect the unique beauty of the coastal landscape and produce a beautiful, natural patina as they age. Our nature-inspired finishes are truly a living art and not only protect your piece, but create a more beautiful luster with time.



Name: VINTAGE LONG BAR WITH CROSS SECTION CHANDELIER

Item Number: LCO-IH-504

Description: The Vintage Long Bar with Cross Section Chandelier is elegant and simply stated with 5 staggered candle holders. The beauty within this fixture is that it works well in traditional or contemporary design applications.

Dimensions: 26"W x 44"L x 36"H + CHAIN

Canopy: 4" x 24" Rectangular

Material: Steel

Bulb/Wattage: 5/40C

Shown In: Copper

Finishes: Our light fixture finishes are designed to be as lively and ever-changing as the Lowcountry landscape itself. Providing depth and character to your custom design, our finishes reflect the unique beauty of the coastal landscape and produce a beautiful, natural patina as they age. Our nature-inspired finishes are truly a living art and not only protect your piece, but create a more beautiful luster with time.



Name: SOFT CURVED CHANDELIER

Item Number: LCO-161

Description: The subtle yet accented design of the Soft Curved Chandelier will fit into any design, traditional or contemporary. The copper bands pull in the design of the copper bobeches. The arms of this chandelier offer up to 6 lights and will fill your space with an inviting glow.

Dimensions: 39"W x 40"H

Canopy: 6" Round

Material: Steel

Bulb/Wattage: 6/40C

Shown In: Darkened Bronze and Darkened Copper

Finishes: Our light fixture finishes are designed to be as lively and ever-changing as the Lowcountry landscape itself. Providing depth and character to your custom design, our finishes reflect the unique beauty of the coastal landscape and produce a beautiful, natural patina as they age. Our nature-inspired finishes are truly a living art and not only protect your piece, but create a more beautiful luster with time.



Name: HALF SPIRAL CHANDELIER

Item Number: LCO-103

Description: The Half Spiral Chandelier was created with the idea of flow and movement in a room. A contemporary piece is benchmade, with steel arms and beeswax candle covers that add character to any space.

Dimensions: 36"DIA x 29"H

Canopy: 6" Round

Material: Steel

Bulb/Wattage: 6/40C

Shown In: Darkened Bronze

Finishes: Our light fixture finishes are designed to be as lively and ever-changing as the Lowcountry landscape itself. Providing depth and character to your custom design, our finishes reflect the unique beauty of the coastal landscape and produce a beautiful, natural patina as they age. Our nature-inspired finishes are truly a living art and not only protect your piece, but create a more beautiful luster with time.



Name: FRAME WITH OYSTER LINEN GLASS CHANDELIER

Item Number: LCO-201

Description: The Frame with Oyster Linen Glass Chandelier is a sleek statement piece for any style. The linen shades are nestled in a simple steel frame that illuminates a room for a lovely ambiance.

Dimensions: 60"L x 6 1/2"DEEP x 35"H + CHAIN

Canopy: 6" x 36" Rectangular

Material: Steel Frame, Linen Glass Shades

Bulb/Wattage: 4/40C

Shown In: Antique White and Black

Finishes: Our light fixture finishes are designed to be as lively and ever-changing as the Lowcountry landscape itself. Providing depth and character to your custom design, our finishes reflect the unique beauty of the coastal landscape and produce a beautiful, natural patina as they age. Our nature-inspired finishes are truly a living art and not only protect your piece, but create a more beautiful luster with time.



Name: CRESCENT CHANDELIER

Item Number: LCO-202

Description: The Lowcountry Originals Crescent Chandelier is a delicate balance of two crescents in the form of a ying-yang design style. Custom made by skilled artisans at the finish of your choice.

Dimensions: 48"L x 16"W x 26"BODY + STEM

Canopy: 6" Round

Material: Steel

Bulb/Wattage: 10/40C

Shown In: Darkened Bronze

Finishes: Our light fixture finishes are designed to be as lively and ever-changing as the Lowcountry landscape itself. Providing depth and character to your custom design, our finishes reflect the unique beauty of the coastal landscape and produce a beautiful, natural patina as they age. Our nature-inspired finishes are truly a living art and not only protect your piece, but create a more beautiful luster with time.



Name: COPPER & BRASS CHANDELIER

Item Number: LCO-IH-501

Description: The copper and brass chandelier is a melody of metals that work well in both contemporary and urban design. The mixed materials are combined with industrial parts to create a modern look. The Edison bulbs offer a gleaming lucent hue to the polished copper and brass to create an inviting warmth in any space.

Dimensions: 44"L x 44"H

Canopy: 6" Square

Material: Steel

Bulb/Wattage: 4/100M

Shown In: Copper and Brass

Finishes: Our light fixture finishes are designed to be as lively and ever-changing as the Lowcountry landscape itself. Providing depth and character to your custom design, our finishes reflect the unique beauty of the coastal landscape and produce a beautiful, natural patina as they age. Our nature-inspired finishes are truly a living art and not only protect your piece, but create a more beautiful luster with time.



Name: VINTAGE PIPE WORKS CHANDELIER

Item Number: LCO-IH-049-FL

Description: The Raw Brass Vintage Pipe Works chandelier takes us from tradition, blends with modern design, and shifts back to tradition with the beautiful Edison bulbs. Have fun with this handcrafted lighting fixture. Made in raw brass, it can also be crafted in steel as well or a combo of both.

Dimensions: 48"L x 24"W x 36"H

Canopy: 6" Round

Material: Brass; Also available in Steel

Bulb/Wattage: 12/40M

Shown In: Brass and Nickel

Finishes: Our light fixture finishes are designed to be as lively and ever-changing as the Lowcountry landscape itself. Providing depth and character to your custom design, our finishes reflect the unique beauty of the coastal landscape and produce a beautiful, natural patina as they age. Our nature-inspired finishes are truly a living art and not only protect your piece, but create a more beautiful luster with time.



Name: DOME LANTERN

Item Number: LCO-157

Description: The Dome Lantern is an excellent foyer lighting piece. Elegant in an old gold finish, this lantern looks good in its simplicity without glass. The 10" real beeswax candles reach up to the gently curving rods that support this fixture.

Dimensions: 18"SQ x 31"H

Canopy: 6" Round

Material: Steel

Bulb/Wattage: 4/40C

Shown In: Spartina

Finishes: Our light fixture finishes are designed to be as lively and ever-changing as the Lowcountry landscape itself. Providing depth and character to your custom design, our finishes reflect the unique beauty of the coastal landscape and produce a beautiful, natural patina as they age. Our nature-inspired finishes are truly a living art and not only protect your piece, but create a more beautiful luster with time.



Name: BOX HART CHANDELIER WITH STAGGERED ARMS

Item Number: LCO-183

Description: The Box Hart Chandelier with Staggered Arms combines modern flair with timeless tradition. Praised for the delicate round bobèche, the authentic beeswax candle covers, and crystal sphere details. A great solution for tall foyers and all design disciplines.

Dimensions: 24SQ x 38"H

Canopy: 6" Round

Material: Brass and Steel With Crystal Sphere

Bulb/Wattage: 8/40C

Shown In: Steel and Brass

Finishes: Our light fixture finishes are designed to be as lively and ever-changing as the Lowcountry landscape itself. Providing depth and character to your custom design, our finishes reflect the unique beauty of the coastal landscape and produce a beautiful, natural patina as they age. Our nature-inspired finishes are truly a living art and not only protect your piece, but create a more beautiful luster with time.



Name: BOX HART 28" LANTERN

Item Number: LCO-005

Description: The Box Hart Large fixture is made of steel with a rustic finish. Available in a variety of finishes, it is one of the most popular light fixtures and can be customized in a variety of sizes. Sizes range from 15" box to 60" box. Shown with beeswax candle covers. Standard sizes are 24" and 28".

Dimensions: 28" SQ x 42" H + 32" ROD

Canopy: 6" Round

Material: Steel

Bulb/Wattage: 8/25C

Shown In: Old Gold

Finishes: Our light fixture finishes are designed to be as lively and ever-changing as the Lowcountry landscape itself. Providing depth and character to your custom design, our finishes reflect the unique beauty of the coastal landscape and produce a beautiful, natural patina as they age. Our nature-inspired finishes are truly a living art and not only protect your piece, but create a more beautiful luster with time.



Name: RECTANGULAR CHANDELIER WITH SEEDED GLASS

Item Number: LCO-028

Description: The Rectangular Chandelier with Seeded Glass is a versatile and attractive light fixture with and without seeded glass. Shown with real beeswax candle covers.

Dimensions: 36"L x 12"W x 12"H + STEM

Canopy: 5" x 14" Rectangular Sliding

Material: Steel

Bulb/Wattage: 5/40C

Shown In: Raw Steel

Finishes: Our light fixture finishes are designed to be as lively and ever-changing as the Lowcountry landscape itself. Providing depth and character to your custom design, our finishes reflect the unique beauty of the coastal landscape and produce a beautiful, natural patina as they age. Our nature-inspired finishes are truly a living art and not only protect your piece, but create a more beautiful luster with time.



Name: SEMI FLUSH CALIBOGUE

Item Number: LCO-036

Description: The Semi Flush Calibogue fixture with seeded glass is perfect for lower ceiling height. The seeded glass adds an old-world charm. Shown with real beeswax candle covers.

Dimensions: 14" SQ x 6"D x 12"H

Canopy: 5" Square Sliding

Material: Steel

Bulb/Wattage: 4/25C

Shown In: Darkened Bronze

Finishes: Our light fixture finishes are designed to be as lively and ever-changing as the Lowcountry landscape itself. Providing depth and character to your custom design, our finishes reflect the unique beauty of the coastal landscape and produce a beautiful, natural patina as they age. Our nature-inspired finishes are truly a living art and not only protect your piece, but create a more beautiful luster with time.



Name: CALIBOGUE CHANDELIER

Item Number: LCO-044

Description: The Calibogue Chandelier with Seeded Glass lends itself to old-world charm. Beautiful in any setting and an excellent chandelier to create in various sizes provided top stays in proportion.

Dimensions: 24"SQ x 32"H

Canopy: 6" Round

Material: Steel

Bulb/Wattage: 4/40C

Shown In: Darkened Bronze

Finishes: Our light fixture finishes are designed to be as lively and ever-changing as the Lowcountry landscape itself. Providing depth and character to your custom design, our finishes reflect the unique beauty of the coastal landscape and produce a beautiful, natural patina as they age. Our nature-inspired finishes are truly a living art and not only protect your piece, but create a more beautiful luster with time.



Name: 14" BOX PENDANT WITH SEEDED GLASS

Item Number: LCO-109

Description: The Box Pendant with Seeded Glass and sloped sides is a timeless design. The seeded glass creates a graceful glow with the inner four bulb cluster and classic outline. The candle covers are real beeswax.

Dimensions: 14" SQ x 16"H

Canopy: 6" Round

Material: Steel

Bulb/Wattage: 4/40C

Shown In: Ocean Mist

Finishes: Our light fixture finishes are designed to be as lively and ever-changing as the Lowcountry landscape itself. Providing depth and character to your custom design, our finishes reflect the unique beauty of the coastal landscape and produce a beautiful, natural patina as they age. Our nature-inspired finishes are truly a living art and not only protect your piece, but create a more beautiful luster with time.



Name: DOUBLE BOX WITH EDISON PENDANT

Item Number: LCO-120

Description: The handcrafted Double Box Pendant plays geometrically on a square within a square. A fun contemporary piece is toned down with the Edison bulb to note an earlier era. Available in all LCO custom finishes. Finish it any color that fits your design.

Dimensions: 18"W x 18"H + STEM

Canopy: 6" Square Sliding

Material: Steel

Bulb/Wattage: 1/Edison Bulb

Shown In: Silver and Gold

Finishes: Our light fixture finishes are designed to be as lively and ever-changing as the Lowcountry landscape itself. Providing depth and character to your custom design, our finishes reflect the unique beauty of the coastal landscape and produce a beautiful, natural patina as they age. Our nature-inspired finishes are truly a living art and not only protect your piece, but create a more beautiful luster with time.



Name: YOKED LANTERN

Item Number: LCO-164

Description: We took the traditional lantern and dressed up the design adding the seeded glass to an antiqued frame with yoke. The vintage distressing adds to the detail of this delightful piece while the glass accentuates the luminous glow provided by the beeswax candle-covered lights.

Dimensions: 30"L x 15"W x 30"H

Canopy: 5" x 14" Rectangular

Material: Steel with Seeded Glass

Bulb/Wattage: 4/40C

Shown In: Antique White

Finishes: Our light fixture finishes are designed to be as lively and ever-changing as the Lowcountry landscape itself. Providing depth and character to your custom design, our finishes reflect the unique beauty of the coastal landscape and produce a beautiful, natural patina as they age. Our nature-inspired finishes are truly a living art and not only protect your piece, but create a more beautiful luster with time.



Name: LANTERN WITH RINGS

Item Number: LCO-165

Description: The ornamental rings on this lantern offer up a delicate design accent offering an inviting ambiance. Shown in a silver finish, the elegance of this fixture is offset by the vintage seeded glass and gleaming light. Available in all finishes.

Dimensions: 24"W x 12"D x 41"H

Canopy: 6" Round

Material: Steel and Seeded Glass

Bulb/Wattage: 4/40C

Shown In: Silver

Finishes: Our light fixture finishes are designed to be as lively and ever-changing as the Lowcountry landscape itself. Providing depth and character to your custom design, our finishes reflect the unique beauty of the coastal landscape and produce a beautiful, natural patina as they age. Our nature-inspired finishes are truly a living art and not only protect your piece, but create a more beautiful luster with time.



Name: ELONGATED BOX HART CHANDELIER

Item Number: LCO-178

Description: The Enlongated Box Hart Lantern in Old Gold finish with square candle covers in beeswax adds to Lowcountry flair with it's the geometric shape and antique-like finish. Available in all the Lowcountry finishes. This fixture can be custom designed to fit your application and style.

Dimensions: 36"L x 15"W x 27"H + STEM

Canopy: 6" Round

Material: Steel

Bulb/Wattage: 6/40C

Shown In: Old Gold

Finishes: Our light fixture finishes are designed to be as lively and ever-changing as the Lowcountry landscape itself. Providing depth and character to your custom design, our finishes reflect the unique beauty of the coastal landscape and produce a beautiful, natural patina as they age. Our nature-inspired finishes are truly a living art and not only protect your piece, but create a more beautiful luster with time.



Name: DOUBLE CHANDELIER TIER WITH RODS

Item Number: LCO-230

Description: The Double Tier Chandelier with Rods is a contemporary twist to the Circular Tubing piece in our collection. This large-scale chandelier is perfect for vaulted ceilings and larger rooms. A statement piece for any design.

Dimensions: 63" DIA X 60"H

Canopy: 6" Round

Material: Steel

Bulb/Wattage: 20/40C

Shown In: Sea Salt + Anchor Gray

Finishes: Our light fixture finishes are designed to be as lively and ever-changing as the Lowcountry landscape itself. Providing depth and character to your custom design, our finishes reflect the unique beauty of the coastal landscape and produce a beautiful, natural patina as they age. Our nature-inspired finishes are truly a living art and not only protect your piece, but create a more beautiful luster with time.



Name: CROSSWINDS CHANDELIER

Item Number: LCO-221

Description: Our Crosswinds chandelier presents an industrial design with southern charm. The linear shape boasts arms that reach across the room for a luminous glow. The crafted accent coil and bobeches in a contrasting color add an artful touch. Shown in darkened bronze with spartina accents.

Dimensions: 47" L X 19" W X 29" H

Canopy: 5" X 8" Rectangular

Material: Steel

Bulb/Wattage: 6/40C

Shown In: Darkened Bronze and Spartina

Finishes: Our light fixture finishes are designed to be as lively and ever-changing as the Lowcountry landscape itself. Providing depth and character to your custom design, our finishes reflect the unique beauty of the coastal landscape and produce a beautiful, natural patina as they age. Our nature-inspired finishes are truly a living art and not only protect your piece, but create a more beautiful luster with time.



Name: OSPREY BRANCH CHANDELIER

Item Number: LCO-222

Description: The Osprey Branch Chandelier is a masterpiece design. The artful branches with hand-cut copper leaves and the grand scale of the branches make this a truly magnificent piece of art.

Dimensions: 60"L x 24"H x CHAIN

Canopy: 4" x 24" Rectangular

Material: Steel

Bulb/Wattage: 6/40C

Shown In: Antique Platinum

Finishes: Our light fixture finishes are designed to be as lively and ever-changing as the Lowcountry landscape itself. Providing depth and character to your custom design, our finishes reflect the unique beauty of the coastal landscape and produce a beautiful, natural patina as they age. Our nature-inspired finishes are truly a living art and not only protect your piece, but create a more beautiful luster with time.



Name: ATLAS GLOBE CHANDELIER

Item Number: LCO-023

Description: The Atlas Globe Chandelier is as universal as its design. It is beautifully accented a six-light cluster. Available in all finishes except brass and copper and can be customized.

Dimensions: 30"DIA x 36"H

Canopy: 6" Round

Material: Steel

Bulb/Wattage: 6/40C

Shown In: Darkened Bronze

Finishes: Our light fixture finishes are designed to be as lively and ever-changing as the Lowcountry landscape itself. Providing depth and character to your custom design, our finishes reflect the unique beauty of the coastal landscape and produce a beautiful, natural patina as they age. Our nature-inspired finishes are truly a living art and not only protect your piece, but create a more beautiful luster with time.



Name: GARDEN BASKET CHANDELIER

Item Number: LCO-122

Description: The handcrafted bowl-shaped Garden Basket Chandelier lends itself not only to a lighting fixture but a bowl to hold a seasonal bouquet or plant. A fixture for all seasons. Available in all finishes.

Dimensions: 24"DIA x 36"H

Canopy: 6" Round

Material: Steel

Bulb/Wattage: 6/40C

Shown In: Antique Platinum

Finishes: Our light fixture finishes are designed to be as lively and ever-changing as the Lowcountry landscape itself. Providing depth and character to your custom design, our finishes reflect the unique beauty of the coastal landscape and produce a beautiful, natural patina as they age. Our nature-inspired finishes are truly a living art and not only protect your piece, but create a more beautiful luster with time.



Name: ANTIQUE ROUND BASKET

Item Number: LCO-050

Description: The Antique Round Basket is a sizable piece and perfect for grand foyers, lodges, and ranch-style design. Beeswax candle covers enhance the vintage detail of this piece.

Dimensions: 43"DIA x 48"H

Canopy: 6" Round

Material: Steel

Bulb/Wattage: 6/40C

Shown In: Darkened Bronze

Finishes: Our light fixture finishes are designed to be as lively and ever-changing as the Lowcountry landscape itself. Providing depth and character to your custom design, our finishes reflect the unique beauty of the coastal landscape and produce a beautiful, natural patina as they age. Our nature-inspired finishes are truly a living art and not only protect your piece, but create a more beautiful luster with time.



Name: TWISTED METAL CHANDELIER

Item Number: LCO-141

Description: The Twisted Metal Chandelier blends Savannah's inviting charm and the Lowcountry natural beauty. Elegant and unique with interesting wrapped metal rods and decorative rings..

Dimensions: 32"DIA x 36"H

Canopy: 6" Round

Material: Steel

Bulb/Wattage: 9/40C

Shown In: Antique Green

Finishes: Our light fixture finishes are designed to be as lively and ever-changing as the Lowcountry landscape itself. Providing depth and character to your custom design, our finishes reflect the unique beauty of the coastal landscape and produce a beautiful, natural patina as they age. Our nature-inspired finishes are truly a living art and not only protect your piece, but create a more beautiful luster with time.



Name: ELONGATED SCROLL CHANDELIER

Item Number: LCO-151

Description: The handcrafted Elongated Scroll Chandelier is simple and beautiful. Made in steel with small brass spheres under the bobeches, this chandelier adds charm with its graceful gentle sweeping scrolls. It is a beautiful touch of style so true to the Lowcountry's casual elegance.

Dimensions: 51"L x 28"W x 31"H

Canopy: 5" Round

Material: Steel with Brass Spheres

Bulb/Wattage: 8/40C

Shown In: Shown in Darkened Bronze

Finishes: Our light fixture finishes are designed to be as lively and ever-changing as the Lowcountry landscape itself. Providing depth and character to your custom design, our finishes reflect the unique beauty of the coastal landscape and produce a beautiful, natural patina as they age. Our nature-inspired finishes are truly a living art and not only protect your piece, but create a more beautiful luster with time.



Name: 8 LIGHT GAS REPLICA

Item Number: LCO-013

Description: The handcrafted 8 Light Gas Replica Chandelier provides a luminous glow over your dining area. It is traditional in its style with matador globes and decorative globe holding cups. Use flicker bulbs to get that authentic gas flame look.

Dimensions: 51"L x 28"W + STEM

Canopy: 5" x 14" Rectangular

Material: Steel

Bulb/Wattage: 8/60C

Shown In: Darkened Bronze and Brass

Finishes: Our light fixture finishes are designed to be as lively and ever-changing as the Lowcountry landscape itself. Providing depth and character to your custom design, our finishes reflect the unique beauty of the coastal landscape and produce a beautiful, natural patina as they age. Our nature-inspired finishes are truly a living art and not only protect your piece, but create a more beautiful luster with time.



Name: 8 LIGHT STEP MATADOR CHANDELIER

Item Number: LCO-152

Description: The Matador globe staggered eight-light gas replica chandelier is graceful with its gently bending arms and varied arm lengths. The slender matador chimneys are elegant and reflect the light for a subtle glow and presentation. Consider the *flicker bulb for a true gas light feeling in an electric fixture.

Dimensions: 42" DIA x 42"H

Canopy: 6" Round

Material: Steel with Glass Matador Chimneys

Bulb/Wattage: 8/40C

Shown In: Shown in Black

Finishes: Our light fixture finishes are designed to be as lively and ever-changing as the Lowcountry landscape itself. Providing depth and character to your custom design, our finishes reflect the unique beauty of the coastal landscape and produce a beautiful, natural patina as they age. Our nature-inspired finishes are truly a living art and not only protect your piece, but create a more beautiful luster with time.



Name: EIGHT LIGHT J CHANDELIER

Item Number: LCO-163

Description: The Eight-Light J Chandelier offers an old-world oil lamp design in a chandelier style. The fixture is shown in Old Gold to accentuate the vintage styling. The flicker bulbs and matador glass offers an incandescent hue inviting all to enjoy the soft glow of this exquisite piece.

Dimensions: 40"DIA x 48"H

Canopy: 6" Round

Material: Steel/Matador Glass

Bulb/Wattage: 8/40C

Shown In: Old Gold

Finishes: Our light fixture finishes are designed to be as lively and ever-changing as the Lowcountry landscape itself. Providing depth and character to your custom design, our finishes reflect the unique beauty of the coastal landscape and produce a beautiful, natural patina as they age. Our nature-inspired finishes are truly a living art and not only protect your piece, but create a more beautiful luster with time.



Name: GAS REPLICA LANTERN

Item Number: LCO-139

Description: The Gas Replica Lantern offers an old-time Lowcountry ambiance. Old fashioned 8 glass globes reflect the beauty of an era of easy-going casual living. Enhancing the beauty of this handcrafted fixture are the flicker bulbs that hold true to the original gas inspired design.

Dimensions: 36"SQ x 36"H

Canopy: 6" Round

Material: Steel

Bulb/Wattage: 4/40C

Shown In: Darkened Bronze

Finishes: Our light fixture finishes are designed to be as lively and ever-changing as the Lowcountry landscape itself. Providing depth and character to your custom design, our finishes reflect the unique beauty of the coastal landscape and produce a beautiful, natural patina as they age. Our nature-inspired finishes are truly a living art and not only protect your piece, but create a more beautiful luster with time.



Name: 4 LIGHT GAS REPLICA CHANDELIER

Item Number: LCO-010

Description: The Gas Replica Four-Light Chandelier is a concession of the past modern flair. Handcrafted made of steel. This fixture is also available in 2, 3 and 5 lights. A classic any way you select it. Use flicker bulbs to get that authentic gas flame look.

Dimensions: 43"SQ + STEM

Canopy: 6" Round Sliding

Material: Steel

Bulb/Wattage: 4/60C

Shown In: Darkened Bronze

Finishes: Our light fixture finishes are designed to be as lively and ever-changing as the Lowcountry landscape itself. Providing depth and character to your custom design, our finishes reflect the unique beauty of the coastal landscape and produce a beautiful, natural patina as they age. Our nature-inspired finishes are truly a living art and not only protect your piece, but create a more beautiful luster with time.



Name: 3 LIGHT GAS REPLICA CHANDELIER

Item Number: LCO-012

Description: The 3 Light Gas Replica Chandelier is as versatile as it is beautiful. It is traditional and enhances any designed space. Truly charming and inviting in the Lowcountry style. Ask about flicker bulbs to get that authentic gas flame flicker look.

Dimensions: 60"L x 9 3/4"W + STEM

Canopy: 25 1/2"L x 4 1/4"W

Shades: 8"x 9 3/4" Glass Globes

Material: Steel and Glass

Bulb/Wattage: 3/60C

Shown In: Darkened Bronze

Finishes: Our light fixture finishes are designed to be as lively and ever-changing as the Lowcountry landscape itself. Providing depth and character to your custom design, our finishes reflect the unique beauty of the coastal landscape and produce a beautiful, natural patina as they age. Our nature-inspired finishes are truly a living art and not only protect your piece, but create a more beautiful luster with time.



Name: 2 LIGHT GAS REPLICA CHANDELIER

Item Number: LCO-009

Description: The electric 2 Light Gas Replica Chandelier offers a wonderfully nostalgic feeling and is a great choice for a traditional room design. The 12" glass globes help add the charm. Use flicker bulbs to get that authentic gas flame look.

Dimensions: 43"L x 9"W x 15"H to top of globe + STEM

Canopy: 6" Round Sliding

Material: Steel

Bulb/Wattage: 2/60C

Shown In: Darkened Bronze

Finishes: Our light fixture finishes are designed to be as lively and ever-changing as the Lowcountry landscape itself. Providing depth and character to your custom design, our finishes reflect the unique beauty of the coastal landscape and produce a beautiful, natural patina as they age. Our nature-inspired finishes are truly a living art and not only protect your piece, but create a more beautiful luster with time.



Name: OLD TIME PENDANT

Item Number: LCO-137

Description: The handcrafted gas replica Old Time Pendant is the perfect example of American tradition and a nostalgic piece full of charm and grace. Available in various finishes.

Dimensions: 12"W x 30"H x 8"D + STEM

Canopy: 4.5" Dome

Material: Steel

Bulb/Wattage: 1/40C

Shown In: Darkened Bronze

Finishes: Our light fixture finishes are designed to be as lively and ever-changing as the Lowcountry landscape itself. Providing depth and character to your custom design, our finishes reflect the unique beauty of the coastal landscape and produce a beautiful, natural patina as they age. Our nature-inspired finishes are truly a living art and not only protect your piece, but create a more beautiful luster with time.



Name: TEAR DROP GAS REPLICA PENDANT

Item Number: LCO-011

Description: The Gas Replica Tear Drop Pendant is handcrafted from steel tubing. A perfect selection for a special room or nook. The glass globe reflects beauty and ambiance within the designed space. Use flicker bulbs to get that authentic gas flame look.

Dimensions: 12"W x 7"DEEP x 21"H + STEM

Canopy: 5" Round Sliding

Shades: 8"x 9 3/4" Glass Globes

Material: Steel and Glass

Bulb/Wattage: 1/60C

Shown In: Darkened Bronze

Finishes: Our light fixture finishes are designed to be as lively and ever-changing as the Lowcountry landscape itself. Providing depth and character to your custom design, our finishes reflect the unique beauty of the coastal landscape and produce a beautiful, natural patina as they age. Our nature-inspired finishes are truly a living art and not only protect your piece, but create a more beautiful luster with time.



Name: OGLETHORPE PENDANT

Item Number: LCO-004

Description: The Oglethorpe Gas Light Replica Pendant is a modern take on the historic favorite with handcrafted steel tubing and glass globe. Available in various LCO finishes.

Dimensions: 10"DIA X 11"H

Canopy: 6" Round

Material: Steel

Bulb/Wattage: 3/40C

Shown In: Darkened Bronze & Dark Copper

Finishes: Our light fixture finishes are designed to be as lively and ever-changing as the Lowcountry landscape itself. Providing depth and character to your custom design, our finishes reflect the unique beauty of the coastal landscape and produce a beautiful, natural patina as they age. Our nature-inspired finishes are truly a living art and not only protect your piece, but create a more beautiful luster with time.



Name: DRIFTWOOD 4 LIGHT CHANDELIER

Item Number: LCO-008-4LT

Description: The Driftwood 4 Light Chandelier is made with the assist of Nature. Every piece is unique. Copper cones in darkened copper create a rustic, weathered look. It is also available in 3 and 5 lights. Due to the nature of driftwood, we will collect as close to your required length as possible.

Dimensions: 56"L x 11"DIA x 52"H

Canopy: 5" x 14" Rectangular

Material: Steel

Bulb/Wattage: 4/60 Watt

Shown In: Dark Copper

Finishes: Our light fixture finishes are designed to be as lively and ever-changing as the Lowcountry landscape itself. Providing depth and character to your custom design, our finishes reflect the unique beauty of the coastal landscape and produce a beautiful, natural patina as they age. Our nature-inspired finishes are truly a living art and not only protect your piece, but create a more beautiful luster with time.



Name: DRIFTWOOD 3 LIGHT CHANDELIER

Item Number: LCO-008-3LT

Description: The Driftwood 3 Light Chandelier is made with the assist of nature, making every piece unique. The copper cones are darkened copper for a weathered and rustic look. The fixture is also available in 4 and 5 lights. Due to the nature of driftwood, we will collect as close to your required length as possible.

Dimensions: 48"L x 11"DIA x 52"H

Canopy: 5" x 14" Rectangular

Material: Steel

Bulb/Wattage: 3/60 Watt

Shown In: Dark Copper

Finishes: Our light fixture finishes are designed to be as lively and ever-changing as the Lowcountry landscape itself. Providing depth and character to your custom design, our finishes reflect the unique beauty of the coastal landscape and produce a beautiful, natural patina as they age. Our nature-inspired finishes are truly a living art and not only protect your piece, but create a more beautiful luster with time.



Name: ZINC DRUM

Item Number: LCO-047-Zinc

Description: The handcrafted raw Zinc Drum light fixture is handsome in any setting. The pendant edges are trimmed in accent rivets and add to the rustic detail. Perfect for islands, in offices, and over pool tables, this piece is most versatile.

Dimensions: 20"DIA x 29"H

Canopy: 6" Round

Material: Steel, Zinc or Copper Only (Drum)

Bulb/Wattage: 1/100M

Shown In: Darkened Bronze and Raw Zinc

Finishes: Our light fixture finishes are designed to be as lively and ever-changing as the Lowcountry landscape itself. Providing depth and character to your custom design, our finishes reflect the unique beauty of the coastal landscape and produce a beautiful, natural patina as they age. Our nature-inspired finishes are truly a living art and not only protect your piece, but create a more beautiful luster with time.



Name: CYLINDER YOKE PENDANT

Item Number: LCO-058-PENDANT

Description: The Zinc and Steel Cylinder with Yoke Pendant is hand-forged in our Carolina studio. The two tones of mixed metals are both rustic and refined. All LCO custom finishes are available on the yoke only.

Dimensions: 16"DIA x 22"H + STEM

Canopy: 6" Round Sliding

Material: Steel/Copper

Bulb/Wattage: 2/60M

Shown In: Black and Zinc

Finishes: Our light fixture finishes are designed to be as lively and ever-changing as the Lowcountry landscape itself. Providing depth and character to your custom design, our finishes reflect the unique beauty of the coastal landscape and produce a beautiful, natural patina as they age. Our nature-inspired finishes are truly a living art and not only protect your piece, but create a more beautiful luster with time.



Name: DOUBLE COPPER DRUM

Item Number: LCO-047-DBL

Description: This handcrafted Double Copper Drum lends itself beautifully to an extended space. Made of copper then dipped in an acid bath, the finish brings us back to the old times. Boasting with exciting finishing details like the shade with copper rivets and sweeping flat bar.

Dimensions: 73"L x 20"DIA x 24 1/2"H + CHAIN

Canopy: 5" x 14" Rectangular

Material: Steel, Copper or Zinc Only (Drum)

Bulb/Wattage: 2/100M

Shown In: Darkened Copper

Finishes: Our light fixture finishes are designed to be as lively and ever-changing as the Lowcountry landscape itself. Providing depth and character to your custom design, our finishes reflect the unique beauty of the coastal landscape and produce a beautiful, natural patina as they age. Our nature-inspired finishes are truly a living art and not only protect your piece, but create a more beautiful luster with time.



Name: COPPER PYRAMID ISLAND

Item Number: LCO-051

Description: The Copper Pyramid Chandelier is perfect over an island or pool table. Its unique shape and beautiful attaching rings to steel bars add excitement in metalworking with steel and copper. The finish is available in raw copper or dipped in an acid bath for a vintage look. Also see the pendant, LCO-070.

Dimensions: 46"L x 14"SQ x 52"H

Canopy: 5" x 14" Rectangular

Material: Steel

Bulb/Wattage: 3/100M

Shown In: Darkened Bronze

Finishes: Our light fixture finishes are designed to be as lively and ever-changing as the Lowcountry landscape itself. Providing depth and character to your custom design, our finishes reflect the unique beauty of the coastal landscape and produce a beautiful, natural patina as they age. Our nature-inspired finishes are truly a living art and not only protect your piece, but create a more beautiful luster with time.



Name: COPPER PYRAMID PENDANT

Item Number: LCO-070

Description: The Copper Pyramid Pendant has a simple, yet elegant shape. Design details include a large ring and rope for added texture. The fixture's metal acid bath creates exquisite details and adds interest to your room.

Dimensions: 14"W x 21"H + ROPE

Canopy: 6" Square

Material: Steel

Bulb/Wattage: 1/100M

Shown In: Aged Copper

Finishes: Our light fixture finishes are designed to be as lively and ever-changing as the Lowcountry landscape itself. Providing depth and character to your custom design, our finishes reflect the unique beauty of the coastal landscape and produce a beautiful, natural patina as they age. Our nature-inspired finishes are truly a living art and not only protect your piece, but create a more beautiful luster with time.



Name: COPPER CONE PENDANT

Item Number: LCO-094

Description: Our Copper Cone Pendant works beautifully on it's own, or grouped with multiple pieces. The copper is drenched in an acid bath to create a stunning patina for any room of your home.

Dimensions: 14"DIA x 16"H

Canopy: 6" Round

Material: Copper

Bulb/Wattage: 1/100M

Shown In: Copper

Finishes: Our light fixture finishes are designed to be as lively and ever-changing as the Lowcountry landscape itself. Providing depth and character to your custom design, our finishes reflect the unique beauty of the coastal landscape and produce a beautiful, natural patina as they age. Our nature-inspired finishes are truly a living art and not only protect your piece, but create a more beautiful luster with time.



Name: INVERTED PYRAMID PENDANT

Item Number: LCO-092

Description: The Inverted Pyramid Pendant is a distinct piece full of character. The geometric outline, handsome chain detail, canopy, and copper mesh screen highlight a four bulb cluster with beeswax candle covers. Also available with seeded glass.

Dimensions: 24"SQ x 38"H

Canopy: 6" Round

Material: Steel

Bulb/Wattage: 4/40C

Shown In: Gun Metal

Finishes: Our light fixture finishes are designed to be as lively and ever-changing as the Lowcountry landscape itself. Providing depth and character to your custom design, our finishes reflect the unique beauty of the coastal landscape and produce a beautiful, natural patina as they age. Our nature-inspired finishes are truly a living art and not only protect your piece, but create a more beautiful luster with time.



Name: PENDANT WITH SHADE

Item Number: LCO-096

Description: The Pendant with Shade is a classic light fixture. This timeless shade rests on a steel frame accented with mini-chain and rings attaching to a canopy. The steel frame accepts all LCO custom finishes. Shades are available in white linen or white burlap and natural colors.

Dimensions: 20" DIA x 35"H

Canopy: 6" Round

Material: Steel

Shade: 11" X 17" X 20"

Bulb/Wattage: 4/40C

Shown In: Darkened Bronze

Finishes: Our light fixture finishes are designed to be as lively and ever-changing as the Lowcountry landscape itself. Providing depth and character to your custom design, our finishes reflect the unique beauty of the coastal landscape and produce a beautiful, natural patina as they age. Our nature-inspired finishes are truly a living art and not only protect your piece, but create a more beautiful luster with time.



Name: LARGE BURLAP DRUM

Item Number: LCO-053

Description: The Large Burlap Drum with natural burlap lends itself to any décor because of its simple shape. This fixture is also offered in white burlap and white linen. Available in all LCO custom finishes.

Dimensions: 30"DIA x 14"H + STEM

Canopy: 6" Round Sliding

Material: Steel and Natural Linen

Bulb/Wattage: 5/40C

Shown In: Darkened Bronze and Natural Burlap

Finishes: Our light fixture finishes are designed to be as lively and ever-changing as the Lowcountry landscape itself. Providing depth and character to your custom design, our finishes reflect the unique beauty of the coastal landscape and produce a beautiful, natural patina as they age. Our nature-inspired finishes are truly a living art and not only protect your piece, but create a more beautiful luster with time.



Name: BURLAP CYLINDER PENDANT

Item Number: LCO-087

Description: The Burlap Cylinder Pendant makes a statement with its deep tones and textured burlap insert. The piece adds depth and interest to any design. Also available in white burlap and a variety of finishes.

Dimensions: 8" DIA x 25"H

Canopy: 6" Round

Material: Steel/Burlap

Bulb/Wattage: 2/60C

Shown In: Darkened Bronze

Finishes: Our light fixture finishes are designed to be as lively and ever-changing as the Lowcountry landscape itself. Providing depth and character to your custom design, our finishes reflect the unique beauty of the coastal landscape and produce a beautiful, natural patina as they age. Our nature-inspired finishes are truly a living art and not only protect your piece, but create a more beautiful luster with time.



Name: MARSH REED DRUM

Item Number: LCO-002

Description: The Marsh Reed Drum Chandelier is an organic light fixture that pulls in the golden hue of the reeds to warm and illuminate the room. The fixture is made of steel and sustainably sourced Marsh Reeds gathered from the Lowcountry Inlets near the Savannah River.

Dimensions: 28"DIA X 14"H + STEM

Canopy: 6" Round

Material: Steel

Bulb/Wattage: 5/40C

Shown In: Palmetto

Finishes: Our light fixture finishes are designed to be as lively and ever-changing as the Lowcountry landscape itself. Providing depth and character to your custom design, our finishes reflect the unique beauty of the coastal landscape and produce a beautiful, natural patina as they age. Our nature-inspired finishes are truly a living art and not only protect your piece, but create a more beautiful luster with time.



Name: BARNWOOD SQUARE CHANDELIER

Item Number: LCO-063

Description: Our Barnwood Square Chandelier is simple and rustic in its style and offers a lovely glow. This is one of the few chandeliers featuring a rope hanger. The candle sleeves are made of metal and the corners of the square are accented with copper wraps.

Dimensions: 26"SQ x 31"H

Canopy: 6" Square

Material: Rope and Wood

Bulb/Wattage: 4/60C

Shown In: Driftwood Finish

Finishes: Our light fixture finishes are designed to be as lively and ever-changing as the Lowcountry landscape itself. Providing depth and character to your custom design, our finishes reflect the unique beauty of the coastal landscape and produce a beautiful, natural patina as they age. Our nature-inspired finishes are truly a living art and not only protect your piece, but create a more beautiful luster with time.



Name: WOODEN TROUGH CHANDELIER

Item Number: LCO-088

Description: The Wooden Trough Chandelier is inspired by a pastoral lifestyle. The stained wood canopy with hand-forged handles and "s" hook attachments lend to a charming rural style.

Dimensions: 46"L x 26"W x 12"H

Canopy: 5" x 14" Rectangular

Material: Wood

Bulb/Wattage: 3/100M

Shown In: Stained Wood

Finishes: Our light fixture finishes are designed to be as lively and ever-changing as the Lowcountry landscape itself. Providing depth and character to your custom design, our finishes reflect the unique beauty of the coastal landscape and produce a beautiful, natural patina as they age. Our nature-inspired finishes are truly a living art and not only protect your piece, but create a more beautiful luster with time.



Name: OVAL WIRE EXPANDED METAL DRUM

Item Number: LCO-143

Description: The rustic oval drum chandelier is finished with steel metal mesh that illuminates a room in a stunning way. A statement piece for any design. Available in various finishes.

Dimensions: 36"L x 23"W x 16"H + STEM

Canopy: 6" Round

Material: Steel

Bulb/Wattage: 6/40C

Shown In: Rustic Bronze

Finishes: Our light fixture finishes are designed to be as lively and ever-changing as the Lowcountry landscape itself. Providing depth and character to your custom design, our finishes reflect the unique beauty of the coastal landscape and produce a beautiful, natural patina as they age. Our nature-inspired finishes are truly a living art and not only protect your piece, but create a more beautiful luster with time.



Name: ELONGATED CHIPPENDALE

Item Number: LCO-144

Description: The custom wood and steel mixed material Elongated Chippendale Chandelier lends itself to all types of creative ideas. A great fixture to customize with your specific paint color on the wood. You can customize it in different sizes as well.

Dimensions: 42"L x 14"W x 30"H

Canopy: 6" x 14" Rectangular

Material: Steel

Bulb/Wattage: 6/40C

Shown In: Sky Blue and Silver

Finishes: Our light fixture finishes are designed to be as lively and ever-changing as the Lowcountry landscape itself. Providing depth and character to your custom design, our finishes reflect the unique beauty of the coastal landscape and produce a beautiful, natural patina as they age. Our nature-inspired finishes are truly a living art and not only protect your piece, but create a more beautiful luster with time.



Name: CHIPPENDALE PENDANT

Item Number: LCO-123

Description: The classic Chippendale design is transformed as a dramatic pendant. Handcrafted in mixed materials, the Chippendale Pendant is made of wood and steel. Available in a variety of finishes and paint colors.

Dimensions: 18"W x 18"H x 34"H

Canopy: 6" Round

Material: Steel

Bulb/Wattage: 4/40C

Shown In: White Dove and Gold

Finishes: Our light fixture finishes are designed to be as lively and ever-changing as the Lowcountry landscape itself. Providing depth and character to your custom design, our finishes reflect the unique beauty of the coastal landscape and produce a beautiful, natural patina as they age. Our nature-inspired finishes are truly a living art and not only protect your piece, but create a more beautiful luster with time.



Name: INVERTED PYRAMID WITH GLASS PENDANT

Item Number: LCO-155

Description: The Inverted Pyramid Pendant with seeded glass was derived from the Inverted Pyramid Chandelier. The creative inspiration came from simply turning the inverted pyramid upright to be hung as a pendant over an island. Looks great as a pair and is available in all Lowcountry custom finishes.

Dimensions: 18" SQ x 15"H

Canopy: 6" Round

Material: Steel

Bulb/Wattage: 4/40C

Shown In: Old Gold

Finishes: Our light fixture finishes are designed to be as lively and ever-changing as the Lowcountry landscape itself. Providing depth and character to your custom design, our finishes reflect the unique beauty of the coastal landscape and produce a beautiful, natural patina as they age. Our nature-inspired finishes are truly a living art and not only protect your piece, but create a more beautiful luster with time.



Name: QUARTZ CRYSTAL DRUM

Item Number: LCO-159

Description: This streamlined drum fixture is dressed in rough-cut crystal nested in steel bands. The airy yet elegant design is a conversation piece in your home. The natural cut crystals come in a variety of tones. Customize your fixture for a one of a kind piece that is sure to capture your design in its entirety.

Dimensions: 30"DIA x 15"H + STEM

Canopy: 6" Sliding Round

Material: Steel / Crystal

Bulb/Wattage: 5/40C

Shown In: Anchor Gray and Aqua Quartz Crystal

Finishes: Our light fixture finishes are designed to be as lively and ever-changing as the Lowcountry landscape itself. Providing depth and character to your custom design, our finishes reflect the unique beauty of the coastal landscape and produce a beautiful, natural patina as they age. Our nature-inspired finishes are truly a living art and not only protect your piece, but create a more beautiful luster with time.



Name: CIRCULAR SCROLL CHANDELIER

Item Number: LCO-160

Description: The Circular Scroll Chandelier is certainly a one-of-a-kind fixture. The steel swoops and swirls of the design soften the overall pastoral look. The piece holds twelve lights that pull your eye to the lustrous detail of the handcrafted fixture. Available in a variety of finishes.

Dimensions: 42" DIA x 52"H

Canopy: 6" Round

Material: Raw Steel and Copper

Bulb/Wattage: 12/40C

Shown In: Spartina

Finishes: Our light fixture finishes are designed to be as lively and ever-changing as the Lowcountry landscape itself. Providing depth and character to your custom design, our finishes reflect the unique beauty of the coastal landscape and produce a beautiful, natural patina as they age. Our nature-inspired finishes are truly a living art and not only protect your piece, but create a more beautiful luster with time.



Name: RANDOM STIX CHANDELIER

Item Number: LCO-193

Description: The Lowcountry Originals Random Stix Chandelier is artisan crafted from hand-hammered steel and available in multiple finishes. This modern chandelier includes four candle covers and is perfect for industrial interiors.

Dimensions: 24" SQ x 25"H

Canopy: 6" Round

Material: Hand Hammered Steel

Bulb/Wattage: 4/40C

Shown In: Silver

Finishes: Our light fixture finishes are designed to be as lively and ever-changing as the Lowcountry landscape itself. Providing depth and character to your custom design, our finishes reflect the unique beauty of the coastal landscape and produce a beautiful, natural patina as they age. Our nature-inspired finishes are truly a living art and not only protect your piece, but create a more beautiful luster with time.



Name: MEDALLION PENDANT

Item Number: LCO-181

Description: The accented gold medallions add a beautiful touch to this steel chandelier finished in dark bronze. A great library or foyer piece, this handcrafted fixture takes us back into history with old-world charm.

Dimensions: 31"DIA x 32"H

Canopy: 6" Round

Material: Steel

Bulb/Wattage: 4/40C

Shown In: Darkened Bronze and Gold

Finishes: Our light fixture finishes are designed to be as lively and ever-changing as the Lowcountry landscape itself. Providing depth and character to your custom design, our finishes reflect the unique beauty of the coastal landscape and produce a beautiful, natural patina as they age. Our nature-inspired finishes are truly a living art and not only protect your piece, but create a more beautiful luster with time.



Name: DEEP CRYSTAL ELONGATED BOX CHANDELIER

Item Number: LCO-185

Description: Crystal Elongated Chandelier is draped in amber crystal nuggets and sweeping bars extending to a ring canopy. Also available in oyster shell, oyster shell and crystal nugget combination, or aqua and clear tumbled quartz nuggets.

Dimensions: 42"L x 14"W x 26"H

Canopy: 5" x 10" Rectangular

Material: Steel and Amber Crystal

Bulb/Wattage: 6/40C

Shown In: Darkend Bronze and Amber Crystal

Finishes: Our light fixture finishes are designed to be as lively and ever-changing as the Lowcountry landscape itself. Providing depth and character to your custom design, our finishes reflect the unique beauty of the coastal landscape and produce a beautiful, natural patina as they age. Our nature-inspired finishes are truly a living art and not only protect your piece, but create a more beautiful luster with time.



Name: CRYSTAL DRAPE CHANDELIER

Item Number: LCO-192

Description: The Lowcountry Originals Crystal Nugget Drape Chandelier is handcrafted with raw steel and designed with intricate strands of translucent quartz crystal. Each crystal strand ends with a quartz crystal drop adding to this chandelier's balanced mix of contemporary style and traditional elegance. Available in multiple finishes.

Dimensions: 63"DIA x 40"H

Canopy: 6" Round

Material: Steel and Quartz Crystal

Bulb/Wattage: 8/40C

Shown In: Gun Metal

Finishes: Our light fixture finishes are designed to be as lively and ever-changing as the Lowcountry landscape itself. Providing depth and character to your custom design, our finishes reflect the unique beauty of the coastal landscape and produce a beautiful, natural patina as they age. Our nature-inspired finishes are truly a living art and not only protect your piece, but create a more beautiful luster with time.



Name: THREE SHADE CRYSTAL CHANDELIER

Item Number: LCO-194

Description: The Lowcountry Originals Three Shade Crystal Chandelier features three light shades made of clear quartz crystal strands and accented with steel angular beams. This chandelier is available in multiple finishes. .

Dimensions: 60"L x 12" DIA x 37"H

Canopy: 5" x 8" Rectangular

Material: Clear Quartz Crystal and Steel

Bulb/Wattage: 12/40C

Shown In: Silver

Finishes: Our light fixture finishes are designed to be as lively and ever-changing as the Lowcountry landscape itself. Providing depth and character to your custom design, our finishes reflect the unique beauty of the coastal landscape and produce a beautiful, natural patina as they age. Our nature-inspired finishes are truly a living art and not only protect your piece, but create a more beautiful luster with time.



Name: DROP CLUSTER LANTERN

Item Number: LCO-196

Description: The Lowcountry Originals Drop Cluster Lantern is made of steel and features four candle covers. This sleek and contemporary take on a lantern chandelier works well in foyers and walkways and is available in multiple finishes.

Dimensions: 24"DIA x 48"H

Canopy: 6" Round

Material: Steel

Bulb/Wattage: 4/40C

Shown In: Black and Gold

Finishes: Our light fixture finishes are designed to be as lively and ever-changing as the Lowcountry landscape itself. Providing depth and character to your custom design, our finishes reflect the unique beauty of the coastal landscape and produce a beautiful, natural patina as they age. Our nature-inspired finishes are truly a living art and not only protect your piece, but create a more beautiful luster with time.



Name: ELLIPSE CHANDELIER

Item Number: LCO-197

Description: The Lowcountry Originals Ellipse Chandelier features 12 candle covers and is made of raw steel. Available in multiple finishes.

Dimensions: 57"L x 34"W x 24"H

Canopy: 6" Round

Material: Steel

Bulb/Wattage: 12/40C

Shown In: Raw Steel

Finishes: Our light fixture finishes are designed to be as lively and ever-changing as the Lowcountry landscape itself. Providing depth and character to your custom design, our finishes reflect the unique beauty of the coastal landscape and produce a beautiful, natural patina as they age. Our nature-inspired finishes are truly a living art and not only protect your piece, but create a more beautiful luster with time.



Name: PALMETTO LANTERN

Item Number: LCO-199

Description: The Palmetto Lantern is the perfect southern flair for your home. The tapered sloping sides meet at the bottom for a pointed finish. A gold band fixes the top of the lantern while the raw steel elements remain available in multiple finishes.

Dimensions: 11" DIA x 33"H

Canopy: 6" Round

Material: Raw Steel

Bulb/Wattage: 3/40C

Shown In: Darkened Bronze

Finishes: Our light fixture finishes are designed to be as lively and ever-changing as the Lowcountry landscape itself. Providing depth and character to your custom design, our finishes reflect the unique beauty of the coastal landscape and produce a beautiful, natural patina as they age. Our nature-inspired finishes are truly a living art and not only protect your piece, but create a more beautiful luster with time.



Name: RADIUS WITH CRYSTAL DROPLETS

Item Number: LCO-203

Description: The Radius Chandelier with Quartz Crystal Droplets is truly a piece of jewelry for your home. The steel crossbar frame is dripping with crystals and natural oyster shells and finished with a glass sphere. There is not another fixture like it. Available in Various Finishes and customizable in size.

Dimensions: 32"DIA x 22"BODY + STEM

Canopy: 6" Round

Material: Steel, Glass, Crystal, and Oysters

Bulb/Wattage: 6/40C

Shown In: Silver

Finishes: Our light fixture finishes are designed to be as lively and ever-changing as the Lowcountry landscape itself. Providing depth and character to your custom design, our finishes reflect the unique beauty of the coastal landscape and produce a beautiful, natural patina as they age. Our nature-inspired finishes are truly a living art and not only protect your piece, but create a more beautiful luster with time.



Name: FORSYTH CHANDELIER

Item Number: LCO-211

Description: Our Forsyth swivel arm Chandelier is a functional hanging sculpture for your space. This distinctive chandelier is made of rusted and torched mixed metals, and individually handcrafted with variations in each piece. The tubular Edison Bulbs enhance the unique design.

Dimensions: 47"W X 32"H

Canopy: 6" Round

Material: Steel and Copper

Bulb/Wattage: 4/MED

Shown In: Torched Copper Patina

Finishes: Our light fixture finishes are designed to be as lively and ever-changing as the Lowcountry landscape itself. Providing depth and character to your custom design, our finishes reflect the unique beauty of the coastal landscape and produce a beautiful, natural patina as they age. Our nature-inspired finishes are truly a living art and not only protect your piece, but create a more beautiful luster with time.



Name: MCCORMICK PENDANT

Item Number: LCO-209

Description: McCormick Pendant with Seeded Glass on an impressive pyramid frame can be used with or without glass. This light fixture has a modern feel with a timeless look and is customizable in various sizes and finishes.

Dimensions: 20"SQ X 23"H

Canopy: 6" Round

Material: Steel and Seeded Glass

Bulb/Wattage: 1/MED

Shown In: Darkened Bronze

Finishes: Our light fixture finishes are designed to be as lively and ever-changing as the Lowcountry landscape itself. Providing depth and character to your custom design, our finishes reflect the unique beauty of the coastal landscape and produce a beautiful, natural patina as they age. Our nature-inspired finishes are truly a living art and not only protect your piece, but create a more beautiful luster with time.



Name: PROMENADE CHANDELIER

Item Number: LCO-224

Description: The Promenade Chandelier is bold and beautiful. The chandelier has elongated arms and contemporary rings that demand attention. The hand-forged steel curvature is a unique feature of this classic silhouette. A striking piece customizable in scale and finish to complement your design.

Dimensions: 55"L X 35"W X 39"H

Canopy: 6" Round

Material: Steel

Bulb/Wattage: 6/40C

Shown In: Matte Black / Raw Steel

Finishes: Our light fixture finishes are designed to be as lively and ever-changing as the Lowcountry landscape itself. Providing depth and character to your custom design, our finishes reflect the unique beauty of the coastal landscape and produce a beautiful, natural patina as they age. Our nature-inspired finishes are truly a living art and not only protect your piece, but create a more beautiful luster with time.



Name: PROMENADE LANTERN

Item Number: LCO-226

Description: The Promenade Lantern is a ceremonious piece of art for your home. The hand-forged steel curvature is a unique feature of this classic silhouette. A striking piece customizable in scale and finish to complement your design.

Dimensions: 16"SQ X 32"OAH

Canopy: 6" Round

Material: Steel

Bulb/Wattage: 4/40C

Shown In: Darkened Bronze with Old Gold

Finishes: Our light fixture finishes are designed to be as lively and ever-changing as the Lowcountry landscape itself. Providing depth and character to your custom design, our finishes reflect the unique beauty of the coastal landscape and produce a beautiful, natural patina as they age. Our nature-inspired finishes are truly a living art and not only protect your piece, but create a more beautiful luster with time.



Name: SAVANNAH SQUARE LANTERN

Item Number: LCO-186

Description: The Savannah Lantern takes us back to an era of elegance and charm of the historic days of the Lowcountry. This steel lantern is simple in line and introduces half-round bobeche that hold four authentic beeswax candle covered lights. The graceful hand-forged "S" hook tops it off with 2" rings to which the chain attaches. A great foyer piece, this antique gold finished fixture with its simple form works well with any application.

Dimensions: 28"SQ x 23"H

Canopy: 6" Round

Material: Steel

Bulb/Wattage: 4/40C

Shown In: Darkened Bronze

Finishes: Our light fixture finishes are designed to be as lively and ever-changing as the Lowcountry landscape itself. Providing depth and character to your custom design, our finishes reflect the unique beauty of the coastal landscape and produce a beautiful, natural patina as they age. Our nature-inspired finishes are truly a living art and not only protect your piece, but create a more beautiful luster with time.



Name: HAMPTON CHANDELIER

Item Number: LCO-208

Description: The Hampton Chandelier is a classic beauty. Another one of our favorite fixtures that illuminates a room with the open steel arms and 6 metal candles. Customizable in various sizes and finishes.

Dimensions: 30"DIA X 32"H

Canopy: 6" Round

Material: Steel Frame, Metal Sphere

Bulb/Wattage: 6/40C

Shown In: Spartina

Finishes: Our light fixture finishes are designed to be as lively and ever-changing as the Lowcountry landscape itself. Providing depth and character to your custom design, our finishes reflect the unique beauty of the coastal landscape and produce a beautiful, natural patina as they age. Our nature-inspired finishes are truly a living art and not only protect your piece, but create a more beautiful luster with time.



Name: HARBOUR TOWN CHANDELIER

Item Number: LCO-229

Description: The Harbour Town Chandelier draws inspiration from nautical lighting with an untraditional approach to design. This chandelier's open frame and interesting angles make it interesting and functional. Customizable in scale and finish.

Dimensions: 32" DIA X 27"H

Canopy: 6" Round

Material: Steel with Copper Accents

Bulb/Wattage: 6/40C

Shown In: White Dove and Darkened Copper

Finishes: Our light fixture finishes are designed to be as lively and ever-changing as the Lowcountry landscape itself. Providing depth and character to your custom design, our finishes reflect the unique beauty of the coastal landscape and produce a beautiful, natural patina as they age. Our nature-inspired finishes are truly a living art and not only protect your piece, but create a more beautiful luster with time.



Name: DROP CLUSTER PENDANT

Item Number: LCO-231

Description: The Drop Cluster pendant is the smart solution for smaller spaces. This petite piece is the perfect simple southern flair for your home. This piece can be customized in scale to fit the application.

Dimensions: 30"DIA X 21"H

Canopy: 6" Round

Material: Steel

Bulb/Wattage: 4/40C

Shown In: Sand Dollar-Beeswax

Finishes: Our light fixture finishes are designed to be as lively and ever-changing as the Lowcountry landscape itself. Providing depth and character to your custom design, our finishes reflect the unique beauty of the coastal landscape and produce a beautiful, natural patina as they age. Our nature-inspired finishes are truly a living art and not only protect your piece, but create a more beautiful luster with time.



Name: MAJESTIC PALM LANTERN

Item Number: LCO-232

Description: This exquisite box-like lantern was designed for lower ceiling heights and smaller spaces. The unique lantern style boasts dramatic hand-forged steel palm leaves with hand-some flat bars in contrasting finishes.

Dimensions: 28"SQ X 24"H

Canopy: 6" Round

Material: Steel

Bulb/Wattage: 6/40C

Shown In: Darkened Bronze / A.P Palms - Beeswax CC

Finishes: Our light fixture finishes are designed to be as lively and ever-changing as the Lowcountry landscape itself. Providing depth and character to your custom design, our finishes reflect the unique beauty of the coastal landscape and produce a beautiful, natural patina as they age. Our nature-inspired finishes are truly a living art and not only protect your piece, but create a more beautiful luster with time.



Name: MAJESTIC PALM

Item Number: LCO-223

Description: The Majestic Palm Lantern is the flagship piece for the 2021 Collection. The exquisite classic lantern style boasts dramatic hand-forged steel palm leaves with handsome flat bars in contrasting finishes. The benchmade light can be customized in scale and finish to complement your design.

Dimensions: 14"SQ X 31"OAH (approx 6"H grass varied heights)

Canopy: 6' ROUND

Material: Steel

Bulb/Wattage: 4/40C

Shown In: Navy with Solid Gold Accents

Finishes: Our light fixture finishes are designed to be as lively and ever-changing as the Lowcountry landscape itself. Providing depth and character to your custom design, our finishes reflect the unique beauty of the coastal landscape and produce a beautiful, natural patina as they age. Our nature-inspired finishes are truly a living art and not only protect your piece, but create a more beautiful luster with time.



Name: PALMETTO LANTERN

Item Number: LCO-233

Description: The Palmetto Lantern has a large drop pendant that adds the perfect southern flair for your home. The tapered sloping sides meet at the bottom for a pointed finish. A gold band fixes the top of the lantern while the raw steel elements remain available in multiple finishes.

Dimensions: 24"W X 60"H

Canopy: 6" Round

Material: Raw Steel

Bulb/Wattage: 6/40C

Shown In: Darkened Bronze with Old Gold, Old Gold CC

Finishes: Our light fixture finishes are designed to be as lively and ever-changing as the Lowcountry landscape itself. Providing depth and character to your custom design, our finishes reflect the unique beauty of the coastal landscape and produce a beautiful, natural patina as they age. Our nature-inspired finishes are truly a living art and not only protect your piece, but create a more beautiful luster with time.

SCONCES



Name: NAPLES SCONCE

Item Number: LCO-244

Description: The Naples Sconce is inspired by vintage Floridian designs with an art deco influence. The steel palm frond is centered between two candelabra-style bulbs with beeswax candle covers that emanate a beautiful, soft glow.

Dimensions: 18"W x 27"OAH

Backplate: 7" Round Backplate

Material: Steel

Bulb/Wattage: 2/40C

Shown In: Antique Platinum and Palmetto

Finishes: Our light fixture finishes are designed to be as lively and ever-changing as the Lowcountry landscape itself. Providing depth and character to your custom design, our finishes reflect the unique beauty of the coastal landscape and produce a beautiful, natural patina as they age. Our nature-inspired finishes are truly a living art and not only protect your piece, but create a more beautiful luster with time.



Name: SINGLE 18" SCONCE

Item Number: LCO-006-SCONCE

Description: This single scone is made of steel with a darkened bronze finish. This particular fixture works with both modern and traditional designs. It comes in 18 and 24-inch height and is also available with petite drum shade.

Dimensions: 5"W x 18"H x 7"EXT

Backplate: 5" x 6"

Material: Steel

Bulb/Wattage: 1/60C

Shown In: Darkened Bronze

Finishes: Our light fixture finishes are designed to be as lively and ever-changing as the Lowcountry landscape itself. Providing depth and character to your custom design, our finishes reflect the unique beauty of the coastal landscape and produce a beautiful, natural patina as they age. Our nature-inspired finishes are truly a living art and not only protect your piece, but create a more beautiful luster with time.



Name: SINGLE 24" SCONCE

Item Number: LCO-006-LG-SCONCE

Description: This single scone is made of steel with a darkened bronze finish. This particular fixture works with both modern and traditional designs. It comes in 18 and 24-inch height and is also available with petite drum shade.

Dimensions: 5"W x 24"H x 7"EXT

Backplate: 5" x 6"

Material: Steel

Bulb/Wattage: 1/60C

Shown In: Darkened Bronze

Finishes: Our light fixture finishes are designed to be as lively and ever-changing as the Lowcountry landscape itself. Providing depth and character to your custom design, our finishes reflect the unique beauty of the coastal landscape and produce a beautiful, natural patina as they age. Our nature-inspired finishes are truly a living art and not only protect your piece, but create a more beautiful luster with time.



Name: SHELL CYLINDER SCONCE

Item Number: LCO-014-SCONCE

Description: The Shell Cylinder Sconce is designed with oyster shells gathered off the coast of Georgia. This sconce is one of a kind due to the oyster shells that are provided by Nature. It is also available with quartz crystal nuggets and is available in all LCO custom finishes. Not available in brass or copper.

Dimensions: 8" DIA x 17"H x 30"H

Backplate: 5" x 10" WITH Arm

Material: Steel

Bulb/Wattage: 2/60C

Shown In: Ocean Mist

Finishes: Our light fixture finishes are designed to be as lively and ever-changing as the Lowcountry landscape itself. Providing depth and character to your custom design, our finishes reflect the unique beauty of the coastal landscape and produce a beautiful, natural patina as they age. Our nature-inspired finishes are truly a living art and not only protect your piece, but create a more beautiful luster with time.



Name: SPIDER SCONCE

Item Number: LCO-016-SCONCE

Description: The Spider Sconce made of steel tubing with interesting arms and angles. Candle covers are made of real beeswax and the arms attach to the half-sphere backplate. This sconce can take on both an urban look or a rustic design with your choice of finish.

Dimensions: 28"W x 7"H x 15"EXT.

Backplate: 4" Round Backplate

Material: Steel

Bulb/Wattage: 4/40C

Shown In: Darkened Bronze

Finishes: Our light fixture finishes are designed to be as lively and ever-changing as the Lowcountry landscape itself. Providing depth and character to your custom design, our finishes reflect the unique beauty of the coastal landscape and produce a beautiful, natural patina as they age. Our nature-inspired finishes are truly a living art and not only protect your piece, but create a more beautiful luster with time.



Name: GAS REPLICA SCONCE

Item Number: LCO-021-SCONCE

Description: The Gas Replica Sconce with the single globe is a perfect match for the replica gas light chandelier fixtures. Its beautiful traditional style is available in all LCO custom finishes.

Dimensions: 8"W x 24"H x 16"EXT.

Backplate: 6" Round Backplate

Material: Steel

Bulb/Wattage: 1/60C

Shown In: Darkened Bronze

Finishes: Our light fixture finishes are designed to be as lively and ever-changing as the Lowcountry landscape itself. Providing depth and character to your custom design, our finishes reflect the unique beauty of the coastal landscape and produce a beautiful, natural patina as they age. Our nature-inspired finishes are truly a living art and not only protect your piece, but create a more beautiful luster with time.



Name: SEEDED GLASS SCONCE

Item Number: LCO-030-SCONCE

Description: The handcrafted Seeded Glass Sconce with vertical seeded glass is a beautiful addition to any dining room, hallway, or wine cellar. Beeswax candle covers take us back in time when those areas were lit with candles.

Dimensions: 24"H x 12"W x 6"EXT

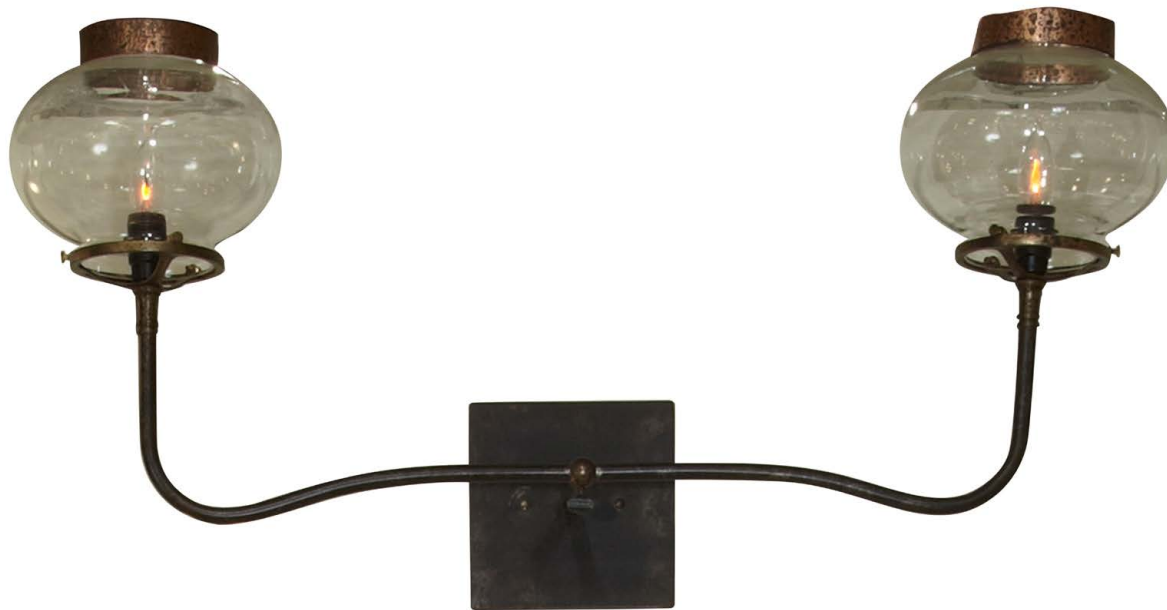
Backplate: 5" x 12" Rectangular

Material: Steel

Bulb/Wattage: 2/40C

Shown In: Darkened Bronze

Finishes: Our light fixture finishes are designed to be as lively and ever-changing as the Lowcountry landscape itself. Providing depth and character to your custom design, our finishes reflect the unique beauty of the coastal landscape and produce a beautiful, natural patina as they age. Our nature-inspired finishes are truly a living art and not only protect your piece, but create a more beautiful luster with time.



Name: 2 LIGHT GAS REPLICA SCONCE

Item Number: LCO-031-SCONCE

Description: The Two Light Gas Replica Sconce is a modern interpretation of the historic gas replica lighting. The sconce creates a charming flickering candlelight glow. Pair with another piece from the gas replica series.

Dimensions: 30"W x 15"H 10"EXT 7 1/4"

(Glass Ring; 4" Fitters)

Backplate: 6" x 6" Square

Material: Steel

Bulb/Wattage: 2/60C

Shown In: Darkened Bronze

Finishes: Our light fixture finishes are designed to be as lively and ever-changing as the Lowcountry landscape itself. Providing depth and character to your custom design, our finishes reflect the unique beauty of the coastal landscape and produce a beautiful, natural patina as they age. Our nature-inspired finishes are truly a living art and not only protect your piece, but create a more beautiful luster with time.



Name: SINGLE J SCONCE

Item Number: LCO-032-SCONCE

Description: The Single J Sconce with its long loop adds to the elegance and simplicity of this piece. Shown in a dark bronze finish and beeswax candle cover, this sconce is equally as beautiful as the Double J Sconce.

Dimensions: 24"H X 5"W x 8"EXT

Canopy: 5" x 6"

Material: Steel

Bulb/Wattage: 1/40C

Shown In: Darkened Bronze

Finishes: Our light fixture finishes are designed to be as lively and ever-changing as the Lowcountry landscape itself. Providing depth and character to your custom design, our finishes reflect the unique beauty of the coastal landscape and produce a beautiful, natural patina as they age. Our nature-inspired finishes are truly a living art and not only protect your piece, but create a more beautiful luster with time.



Name: DOUBLE J SCONCE

Item Number: LCO-033-SCONCE

Description: The handcrafted Double J Sconce with its long loop adds to the elegance and simplicity of this piece. This fixture is shown in the champagne mist finish with beeswax candle covers. Metal sleeves are available for more wattage if necessary.

Dimensions: 12" W x 24"H X 6"EXT

Canopy: 5" x 6

Material: Steel

Bulb/Wattage: 2/40C

Shown In: Champagne Mist

Finishes: Our light fixture finishes are designed to be as lively and ever-changing as the Lowcountry landscape itself. Providing depth and character to your custom design, our finishes reflect the unique beauty of the coastal landscape and produce a beautiful, natural patina as they age. Our nature-inspired finishes are truly a living art and not only protect your piece, but create a more beautiful luster with time.



Name: COPPER CONE SCONCE

Item Number: LCO-039-SCONCE

Description: The copper cone sconce is a great fixture for accent lighting. The sconce is handcrafted in copper and dipped in an acid wash which takes on the patina of old-world charm. Available in a flat finish.

Dimensions: 11"DIA x 22"EXT x 11"H

Backplate: 5" x 5" Diamond Backplate WITH Arm

Material: Steel

Bulb/Wattage: 1/100M

Shown In: Darkened Bronze and Darkened Copper

Finishes: Our light fixture finishes are designed to be as lively and ever-changing as the Lowcountry landscape itself. Providing depth and character to your custom design, our finishes reflect the unique beauty of the coastal landscape and produce a beautiful, natural patina as they age. Our nature-inspired finishes are truly a living art and not only protect your piece, but create a more beautiful luster with time.



Name: STACKED DOUBLE SCONCE

Item Number: LCO-055-SCONCE

Description: The Stacked Double Sconce is rustic and refined. The layered arms create interest and the perfect glow for your space. It is available in all custom finishes with beeswax or painted metal candle sleeves.

Dimensions: 5"W x 17"H x 9"EXT.

Backplate: 5" x 15"

Material: Steel

Bulb/Wattage: 2/60C

Shown In: Darkened Bronze

Finishes: Our light fixture finishes are designed to be as lively and ever-changing as the Lowcountry landscape itself. Providing depth and character to your custom design, our finishes reflect the unique beauty of the coastal landscape and produce a beautiful, natural patina as they age. Our nature-inspired finishes are truly a living art and not only protect your piece, but create a more beautiful luster with time.



Name: BURLAP SCONCE

Item Number: LCO-056

Description: Our Burlap Double Wall Sconce is a great accent piece for your home. The sconce pairs well with the other rustic burlap fixtures handcrafted in our studio.

Dimensions: 20"H x 9"W x 5"EXT.

Backplate: 5" x 12

Material: Steel

Bulb/Wattage: 2/40C

Shown In: Rustic Bronze

Finishes: Our light fixture finishes are designed to be as lively and ever-changing as the Lowcountry landscape itself. Providing depth and character to your custom design, our finishes reflect the unique beauty of the coastal landscape and produce a beautiful, natural patina as they age. Our nature-inspired finishes are truly a living art and not only protect your piece, but create a more beautiful luster with time.



Name: CYLINDER YOKE SCONCE

Item Number: LCO-058

Description: The Copper Cylinder Yoke Sconce was created in response to our favored Yoke Cylinder pendant. The fixture creates interest and provides a soft glow. Various finishes are available for the yoke. The cylinder body of the sconce is handcrafted in copper only.

Dimensions: 16" DIA x 16" H

Backplate: 5" x 5" WITH Arm

Material: Steel

Bulb/Wattage: 1/60M

Shown In: Raw Copper and Antique Green

Finishes: Our light fixture finishes are designed to be as lively and ever-changing as the Lowcountry landscape itself. Providing depth and character to your custom design, our finishes reflect the unique beauty of the coastal landscape and produce a beautiful, natural patina as they age. Our nature-inspired finishes are truly a living art and not only protect your piece, but create a more beautiful luster with time.



Name: SPRING ISLAND BASKET SCONCE

Item Number: LCO-059-SCONCE

Description: The Spring Island Basket Sconce is a lovely compliment to the Spring Island Basket Chandelier. The sconce is both graceful and full of Lowcountry charm. Perfect for small corners and accent walls in your interior design.

Dimensions: 16"W x 26"H x 6"EXT.

Backplate: 5" Round Backplate

Material: Steel

Bulb/Wattage: 2/40C

Shown In: Antique White

Finishes: Our light fixture finishes are designed to be as lively and ever-changing as the Lowcountry landscape itself. Providing depth and character to your custom design, our finishes reflect the unique beauty of the coastal landscape and produce a beautiful, natural patina as they age. Our nature-inspired finishes are truly a living art and not only protect your piece, but create a more beautiful luster with time.



Name: PIPE & SHADE SCONCE

Item Number: LCO-071

Description: The Lowcountry Original's Pipe and Shade Sconce is charming and simple in design. The fixture is constructed with rustic copper and steel pipe and fittings to create an industrial look.

Dimensions: 8"W x 20"H x 12"EXT.

Backplate: 4 1/8" Round Backplate

Material: Steel and Copper

Bulb/Wattage: 1/100M

Shown In: Darkened Bronze and Darkened Copper

Finishes: Our light fixture finishes are designed to be as lively and ever-changing as the Lowcountry landscape itself. Providing depth and character to your custom design, our finishes reflect the unique beauty of the coastal landscape and produce a beautiful, natural patina as they age. Our nature-inspired finishes are truly a living art and not only protect your piece, but create a more beautiful luster with time.



Name: 2 LIGHT U SCONCE

Item Number: LCO-079-SCONCE

Description: The Two Light U Sconce compliments the 8 Light U Chandelier. We have customized this sconce in a variety of ways by increasing the height and adding oyster shells and crystals. It is an impressive piece either as a pair with the chandelier or as an enlarged accent piece. Both are excellent contemporary fixtures.

Dimensions: 8"W x 22"H

Backplate: 5" x 8" Rectangular Backplate

Material: Steel

Bulb/Wattage: 2/40C

Shown In: Raw Steel

Finishes: Our light fixture finishes are designed to be as lively and ever-changing as the Lowcountry landscape itself. Providing depth and character to your custom design, our finishes reflect the unique beauty of the coastal landscape and produce a beautiful, natural patina as they age. Our nature-inspired finishes are truly a living art and not only protect your piece, but create a more beautiful luster with time.



Name: BURLAP CYLINDER SCONCE

Item Number: LCO-087-SCONCE

Description: The Burlap Cylinder scone has a unique circular shape with a burlap insert that lends an impressive glow. The handcrafted arm gently arching off rectangular backplate adds old-world charm. Enjoy a variety of LCO custom finishes.

Dimensions: 8" DIA x 25"H x 12"EXT

Backplate: 5" x 10

Material: Steel/Burlap

Bulb/Wattage: 2/60C

Shown In: Darkened Bronze

Finishes: Our light fixture finishes are designed to be as lively and ever-changing as the Lowcountry landscape itself. Providing depth and character to your custom design, our finishes reflect the unique beauty of the coastal landscape and produce a beautiful, natural patina as they age. Our nature-inspired finishes are truly a living art and not only protect your piece, but create a more beautiful luster with time.



Name: MARSH REED DOUBLE SCONCE

Item Number: LCO-093-SCONCE

Description: The Marsh Reed Double Sconce is truly a one-of-a-kind piece of work. Natural marsh reeds are gathered, dried, and hand-selected for each piece. The hand-forged steel frame is the perfect contrast between the two materials. Creative piece of artwork for your walls.

Dimensions: 12"W x 24"H x 8"EXT

Backplate: 5" x 12

Material: Steel/Marsh Grass

Bulb/Wattage: 2/40C

Shown In: Darkened Bronze

Finishes: Our light fixture finishes are designed to be as lively and ever-changing as the Lowcountry landscape itself. Providing depth and character to your custom design, our finishes reflect the unique beauty of the coastal landscape and produce a beautiful, natural patina as they age. Our nature-inspired finishes are truly a living art and not only protect your piece, but create a more beautiful luster with time.



Name: DOUBLE LAUREL BAY SHELL SCONCE

Item Number: LCO-102-SCONCE

Description: The Laurel Bay Double Sconce is made with steel tubing embellished with natural oyster shell strands. This exquisite piece is customizable in shells or natural quartz crystals.

Dimensions: 19"W x 17"H x 7"EXT.

Backplate: 5" x 7"

Material: Steel

Bulb/Wattage: 2/40C

Shown In: Antique White

Finishes: Our light fixture finishes are designed to be as lively and ever-changing as the Lowcountry landscape itself. Providing depth and character to your custom design, our finishes reflect the unique beauty of the coastal landscape and produce a beautiful, natural patina as they age. Our nature-inspired finishes are truly a living art and not only protect your piece, but create a more beautiful luster with time.



Name: SINGLE LAUREL BAY CRYSTAL SCONCE

Item Number: LCO-101-QC-SCONCE

Description: The Single Sconce Laurel Bay was inspired by the Laurel Bay Chandelier. Handcrafted with square steel tubing and natural crystal droplets for depth and glimmer.

Dimensions: 5"W x 22"H x 10"EXT.

Backplate: 5" x 7

Material: Steel

Bulb/Wattage: 1/40C

Shown In: Darkened Bronze

Finishes: Our light fixture finishes are designed to be as lively and ever-changing as the Lowcountry landscape itself. Providing depth and character to your custom design, our finishes reflect the unique beauty of the coastal landscape and produce a beautiful, natural patina as they age. Our nature-inspired finishes are truly a living art and not only protect your piece, but create a more beautiful luster with time.



Name: GAS REPLICA SCONCE WITH MATADOR CHIMNEY

Item Number: LCO-107-SCONCE

Description: The Gas Replica Sconce with Matador Chimney is a piece of beauty. The delicate metalwork of the globe cup holder and the gentle swoop of the steel tubing adds to the sconces beauty and simplicity of the Lowcountry style. The steel material accepts all LCO custom finishes.

Dimensions: 6"W x 30"H x 8" EXT.

Canopy: 6" Round

Material: Brass Cup and Steel Frame

Bulb/Wattage: 1/40C

Shown In: Darkened Bronze

Finishes: Our light fixture finishes are designed to be as lively and ever-changing as the Lowcountry landscape itself. Providing depth and character to your custom design, our finishes reflect the unique beauty of the coastal landscape and produce a beautiful, natural patina as they age. Our nature-inspired finishes are truly a living art and not only protect your piece, but create a more beautiful luster with time.



Name: SHELL HALF SPHERE SCONCE

Item Number: LCO-136

Description: The Half Shell Sphere Sconce is a stunning piece for any space. Each sconce is uniquely different than the next and always an original due to the beautiful oyster shells colored by nature. The steel frame is a beautiful contrast with a darkened finish.

Dimensions: 18"W x 9"H x 9"EXT

Backplate: 18" x 9

Material: Steel/Shells

Bulb/Wattage: 2/40C

Shown In: Darkened Bronze

Finishes: Our light fixture finishes are designed to be as lively and ever-changing as the Lowcountry landscape itself. Providing depth and character to your custom design, our finishes reflect the unique beauty of the coastal landscape and produce a beautiful, natural patina as they age. Our nature-inspired finishes are truly a living art and not only protect your piece, but create a more beautiful luster with time.



Name: DOUBLE GRANDE MARSH GRASS SCONCE

Item Number: LCO-138-SCONCE

Description: This versatile custom handcrafted Double Grande Marsh Grass Sconce is a design that lends itself to size variations. We have customized this sconce into many sizes from a single-arm up to as many as three arms. Beautiful no matter how you design it. Shown in Dark Bronze with Old Gold Leaves and available in a variety of finishes.

Dimensions: 19"W x 33"H x 5"EXT

Canopy: 5" x 10

Material: Steel

Bulb/Wattage: 2/40C

Shown In: Darkened Bronze and Old Gold

Finishes: Our light fixture finishes are designed to be as lively and ever-changing as the Lowcountry landscape itself. Providing depth and character to your custom design, our finishes reflect the unique beauty of the coastal landscape and produce a beautiful, natural patina as they age. Our nature-inspired finishes are truly a living art and not only protect your piece, but create a more beautiful luster with time.



Name: SINGLE GRANDE MARSH SCONCE

Item Number: LCO-145-SCONCE

Description: Single Grande Marsh Grass Sconce makes it a beautiful choice for all uniquely designed spaces. Made of steel and finished in antique green with darkened bronze backplate gives it a contrast in color and an excellent representation of the Lowcountry marshland. Accepts all LCO custom finish colors.

Dimensions: 12"W x 24"H x 9"EXT.

Canopy: 5" x 15"

Material: Steel

Bulb/Wattage: 1/40C

Shown In: Darkened Bronze and Antique Green

Finishes: Our light fixture finishes are designed to be as lively and ever-changing as the Lowcountry landscape itself. Providing depth and character to your custom design, our finishes reflect the unique beauty of the coastal landscape and produce a beautiful, natural patina as they age. Our nature-inspired finishes are truly a living art and not only protect your piece, but create a more beautiful luster with time.



Name: LONG LOOP SCONCE

Item Number: LCO-147-SCONCE

Description: The Long Loop Sconce stands out for its simplicity. It lends itself beautifully to all Lowcountry custom finishes and satisfies the need for classical, traditional or modern room designs. Beautiful with or without shade. Shade not included.

Dimensions: 6"W x 18"H x 11"EXT

Backplate: 5" Square Backplate

Material: Steel

Bulb/Wattage: 1/40C

Shown In: Champaigne Mist

Finishes: Our light fixture finishes are designed to be as lively and ever-changing as the Lowcountry landscape itself. Providing depth and character to your custom design, our finishes reflect the unique beauty of the coastal landscape and produce a beautiful, natural patina as they age. Our nature-inspired finishes are truly a living art and not only protect your piece, but create a more beautiful luster with time.



Name: TEEPEE SCONCE

Item Number: LCO-148-SCONCE

Description: TeePee Sconce with old world charm handcrafted with 10" metal candle sleeves shows its unique selling point. Embellished with handcrafted copper candle holder, an old gold finish on backplate and arm this piece adds a unique old-world charm to any designed space.

Dimensions: 10"W X 15"H x 4" EXT

Backplate: 5" Diamond Backplate

Material: Steel with Copper Bobeche

Bulb/Wattage: 1/40C

Shown In: Old Gold and Darkened Copper

Finishes: Our light fixture finishes are designed to be as lively and ever-changing as the Lowcountry landscape itself. Providing depth and character to your custom design, our finishes reflect the unique beauty of the coastal landscape and produce a beautiful, natural patina as they age. Our nature-inspired finishes are truly a living art and not only protect your piece, but create a more beautiful luster with time.



Name: SINGLE SCROLL ARM SCONCE

Item Number: LCO-167-SCONCE

Description: Handcrafted Single Scroll Arm Sconce with its rough-cut quartz and shell accent adds elegance and detail to the overall design space. This fixture is shown in the champagne mist finish with beeswax candle covers. Metal sleeves are available for more wattage if necessary.

Dimensions: 23"H x 7"EXT.

Backplate: 5" x 10

Material: Steel, Shell, and Quartz Crystal

Bulb/Wattage: 1/40C

Shown In: Champagne Mist

Finishes: Our light fixture finishes are designed to be as lively and ever-changing as the Lowcountry landscape itself. Providing depth and character to your custom design, our finishes reflect the unique beauty of the coastal landscape and produce a beautiful, natural patina as they age. Our nature-inspired finishes are truly a living art and not only protect your piece, but create a more beautiful luster with time.



Name: MINIMALIST SCONCE

Item Number: LCO-187-SCONCE

Description: The Minimalist Sconce with Globe Bulb is simple in design. A great option for a library. Made in steel and finished in gold paint, this sconce offers a new twist on an old theme with the oversized globe bulb and a 24 sconce neck. The bulb can be replaced with an Edison bulb as well as a Metallic Crown bulb.

Dimensions: 27 1/2"H x 14 "Ext.(ARM 24")

Backplate: 5" x 12

Material: Steel

Bulb/Wattage: 1/Globe Bulb

Shown In: Gold

Finishes: Our light fixture finishes are designed to be as lively and ever-changing as the Lowcountry landscape itself. Providing depth and character to your custom design, our finishes reflect the unique beauty of the coastal landscape and produce a beautiful, natural patina as they age. Our nature-inspired finishes are truly a living art and not only protect your piece, but create a more beautiful luster with time.



Name: FLAT BAR SCONCE

Item Number: LCO-188-SCONCE

Description: This flat-bar sconce brings us back to the days of the horse and carriage of the historic South. The sconce is beautifully accented with copper wraps. The finish shown is antique white. It is equally as beautiful with copper candle covers as it is with the authentic beeswax candle covers shown.

Dimensions: 24"H x 10" EXT

Backplate: 4 ½"W x 18"H Backplate

Material: Steel

Bulb/Wattage: 1/40C

Shown In: Antique White

Finishes: Our light fixture finishes are designed to be as lively and ever-changing as the Lowcountry landscape itself. Providing depth and character to your custom design, our finishes reflect the unique beauty of the coastal landscape and produce a beautiful, natural patina as they age. Our nature-inspired finishes are truly a living art and not only protect your piece, but create a more beautiful luster with time.



Name: CRYSTAL HALF ROUND SCONCE

Item Number: LCO-191-SCONCE

Description: The aqua tones in this rounded scone are created by a colorful palette of quartz crystal nuggets. The fixture is available in clear and amber quartz crystal nuggets to suit your space. LCO custom finishes available for the steel frame. This scone offers great flexibility with its' unique shape and size.

Dimensions: 8"W x 17"H x 5"EXT

Backplate: 8" x 17"

Material: Steel and quartz crystal aqua tumbled nuggets

Bulb/Wattage: 2/40C

Shown In: Antique Silver

Finishes: Our light fixture finishes are designed to be as lively and ever-changing as the Lowcountry landscape itself. Providing depth and character to your custom design, our finishes reflect the unique beauty of the coastal landscape and produce a beautiful, natural patina as they age. Our nature-inspired finishes are truly a living art and not only protect your piece, but create a more beautiful luster with time.



Name: RANDOM STIX SCONCE

Item Number: LCO-198-SCONCE

Description: The Random Stix Sconce is handcrafted with hand-hammered steel and is available in multiple finishes.

Dimensions: 12" BODY (15" OAH) x 8"W x 4" EXT

Backplate: 4 ½" x 18"

Material: Hand Hammered Steel

Bulb/Wattage: 2/40C

Shown In: Champagne Mist

Finishes: Our light fixture finishes are designed to be as lively and ever-changing as the Lowcountry landscape itself. Providing depth and character to your custom design, our finishes reflect the unique beauty of the coastal landscape and produce a beautiful, natural patina as they age. Our nature-inspired finishes are truly a living art and not only protect your piece, but create a more beautiful luster with time.



Name: OYSTER LINEN SCONCE

Item Number: LCO-205-SCONCE

Description: The oyster linen shade sconce with amber crystals is a Designer favorite. This sconce is larger than others in the collection and makes quite the statement in any application. The sconce provides a substantial amount of ambient light for your space.

Dimensions: 18 1/4" W x 9" H (FRAME) x 35" OAH

Backplate: 5" x 8"

Material: Steel frame, oyster shade, natural crystal nuggets

Bulb/Wattage: 4/40C

Shown In: Spartina

Finishes: Our light fixture finishes are designed to be as lively and ever-changing as the Lowcountry landscape itself. Providing depth and character to your custom design, our finishes reflect the unique beauty of the coastal landscape and produce a beautiful, natural patina as they age. Our nature-inspired finishes are truly a living art and not only protect your piece, but create a more beautiful luster with time.



Name: CHESTERFIELD SCONCE

Item Number: LCO-207

Description: Our Chesterfield Sconce is a statement of simplicity at its best. This sconce pairs well with the Chesterfield Chandelier, however, it will work well with any piece in our collections. Available in a variety of finishes.

Dimensions: 30"W X 24"H

Backplate: 4 ½

Material: Steel

Bulb/Wattage: 2/40C

Shown In: Matte Black Finish with Spartina Gold

Finishes: Our light fixture finishes are designed to be as lively and ever-changing as the Lowcountry landscape itself. Providing depth and character to your custom design, our finishes reflect the unique beauty of the coastal landscape and produce a beautiful, natural patina as they age. Our nature-inspired finishes are truly a living art and not only protect your piece, but create a more beautiful luster with time.



Name: FORSYTH SCONCE

Item Number: LCO-210-SCONCE

Description: The swivel arm Forsyth Sconce is a piece of art and takes on a genre of its own. The rusted torched mixed metal sconces are individually handcrafted and unique in design.

Dimensions: 16" W X 10" H X 20" EXT

Backplate: 5" X 10"

Material: Mixed Metals: Copper and Steel

Bulb/Wattage: 2/EDISON

Shown In: Torched Copper Patina

Finishes: Our light fixture finishes are designed to be as lively and ever-changing as the Lowcountry landscape itself. Providing depth and character to your custom design, our finishes reflect the unique beauty of the coastal landscape and produce a beautiful, natural patina as they age. Our nature-inspired finishes are truly a living art and not only protect your piece, but create a more beautiful luster with time.



Name: OSPREY SCONCE

Item Number: LCO-214-SCONCE L/R

Description: The oversized Osprey Sconce is an impressive light fixture featuring twig accents. The design comes with a left and a right (left is shown) and can be completed in a variety of finishes.

Dimensions: 12"W X 24"H X 4" EXT

Backplate: 4 ½" Round Backplate

Material: Steel

Bulb/Wattage: 2/40C

Shown In: Osprey (shown in left version)

Finishes: Our light fixture finishes are designed to be as lively and ever-changing as the Lowcountry landscape itself. Providing depth and character to your custom design, our finishes reflect the unique beauty of the coastal landscape and produce a beautiful, natural patina as they age. Our nature-inspired finishes are truly a living art and not only protect your piece, but create a more beautiful luster with time.



Name: HERITAGE SCONCE

Item Number: LCO-217

Description: A piece of history for the present. Reminiscent of the lighting in Southern interior design, the Heritage scone makes quite the statement in any application.

The piece includes handcrafted ornate metal leaves with beeswax candle covers. Available in various finishes.

Dimensions: 10"W X 24"H X 8"EXT

Backplate: 5" X 5

Material: Steel

Bulb/Wattage: 1/40C

Shown In: Darkened Bronze and Spartina

Finishes: Our light fixture finishes are designed to be as lively and ever-changing as the Lowcountry landscape itself. Providing depth and character to your custom design, our finishes reflect the unique beauty of the coastal landscape and produce a beautiful, natural patina as they age. Our nature-inspired finishes are truly a living art and not only protect your piece, but create a more beautiful luster with time.



Name: PROMENADE SCONCE

Item Number: LCO-225

Description: The Promenade Line of LCO lighting is bold and beautiful. The sconce boasts the same hand-forged steel curvature as the chandelier and lantern. A striking piece customizable in scale and finish to complement your design.

Dimensions: 22"W X 20"H X 7" EXT

Backplate: 5 ¼" ROUND Backplate

Material: Steel

Bulb/Wattage: 2/40C

Shown In: Anchor Gray with Pearl

Finishes: Our light fixture finishes are designed to be as lively and ever-changing as the Lowcountry landscape itself. Providing depth and character to your custom design, our finishes reflect the unique beauty of the coastal landscape and produce a beautiful, natural patina as they age. Our nature-inspired finishes are truly a living art and not only protect your piece, but create a more beautiful luster with time.



Name: COLLETON SCONCE

Item Number: LCO-227

Description: The Colleton Sconce is a charming simplistic design. The clever handcrafted piece is customizable in scale and finishes to complement your home.

Dimensions: 4 ½"W x 24"H x 6" EXT
with 3" BOBECHE

Backplate: 4 ½"

Material: Steel

Bulb/Wattage: 1/40C

Shown In: Palmetto Green

Finishes: Our light fixture finishes are designed to be as lively and ever-changing as the Lowcountry landscape itself. Providing depth and character to your custom design, our finishes reflect the unique beauty of the coastal landscape and produce a beautiful, natural patina as they age. Our nature-inspired finishes are truly a living art and not only protect your piece, but create a more beautiful luster with time.



Name: VINTAGE PIPE WORKS SCONCE

Item Number: LCO-IH-049-SCONCE

Description: The Raw Brass Vintage Pipe Works Sconce is available in raw brass, brass, and steel combinations. The versatile modern fixture can be hung vertical or horizontal.

Dimensions: 20"H x 3" EXT.

Backplate: 5" x 7"

Material: Brass, Steel

Bulb/Wattage: 2/40C

Shown In: Brass

Finishes: Our light fixture finishes are designed to be as lively and ever-changing as the Lowcountry landscape itself. Providing depth and character to your custom design, our finishes reflect the unique beauty of the coastal landscape and produce a beautiful, natural patina as they age. Our nature-inspired finishes are truly a living art and not only protect your piece, but create a more beautiful luster with time.



Name: 2 LIGHT COLLETON SCONCE

Item Number: LCO-228

Description: The Colleton Sconce is a double wall sconce with distinctive character and charm. The oversized scale and two light balance give this piece a lot of personality. It is customizable in scale and finishes to complement your home.

Dimensions: 8"W x 24"H x 6" EXT

Backplate: 4 ½

Material: Steel

Bulb/Wattage: 2/40C

Shown In: Navy finish with white accents

Finishes: Our light fixture finishes are designed to be as lively and ever-changing as the Lowcountry landscape itself. Providing depth and character to your custom design, our finishes reflect the unique beauty of the coastal landscape and produce a beautiful, natural patina as they age. Our nature-inspired finishes are truly a living art and not only protect your piece, but create a more beautiful luster with time.



Left Sconce



Right Sconce

Name: LONG BAR DOUBLE SCONCE LEFT/RIGHT

Item Number: LCO-IH-505-L/R

Description: This handsome geometric sconce is just what your hallway needs. The design comes with a left and a right (both are shown) and is made with copper piping and beeswax candle covers.

Dimensions: 12"W x 3"EXT x 22"H (Lower Arm 17")

Backplate: 4 ½" x 8

Material: Copper

Bulb/Wattage: 2/40C

Shown In: Darkened Copper (shown paired as left and right)

Finishes: Our light fixture finishes are designed to be as lively and ever-changing as the Lowcountry landscape itself. Providing depth and character to your custom design, our finishes reflect the unique beauty of the coastal landscape and produce a beautiful, natural patina as they age. Our nature-inspired finishes are truly a living art and not only protect your piece, but create a more beautiful luster with time.

LAMPS



Name: NAPLES BAY FLOOR LAMP

Item Number: LCO-L39

Description: The Naples Bay Floor Lamp adds an organic, sculptural presence to any room. The hand-cut leaves are illuminated with a soft glow casted by the light and shade above.

Dimensions: 16"W x 64"H

Material: Steel

Bulb/Wattage: 2/MED

Shown In: Spartina and Antique Platinum

Finishes: Our light fixture finishes are designed to be as lively and ever-changing as the Lowcountry landscape itself. Providing depth and character to your custom design, our finishes reflect the unique beauty of the coastal landscape and produce a beautiful, natural patina as they age. Our nature-inspired finishes are truly a living art and not only protect your piece, but create a more beautiful luster with time.



Name: CRAYTON COVE FLOOR LAMP

Item Number: LCO-L40

Description: The Crayton Cove Floor Lamp is created with authentic oyster shells gathered off the coast of Georgia. Handcrafted in steel, the Crayton Cove floor lamp is a romantic piece in true Lowcountry style. Available in all LCO finishes.

Dimensions: 16"W x 64"H

Material: Steel

Bulb/Wattage: 2/MED

Shown In: Antique Platinum

Finishes: Our light fixture finishes are designed to be as lively and ever-changing as the Lowcountry landscape itself. Providing depth and character to your custom design, our finishes reflect the unique beauty of the coastal landscape and produce a beautiful, natural patina as they age. Our nature-inspired finishes are truly a living art and not only protect your piece, but create a more beautiful luster with time.



Name: SHELL DRUM SHADE FLOOR LAMP

Item Number: LCO-L37

Description: The Shell Drum Shade Floor Lamp with shell and quartz crystal accents is a romantic piece in true Lowcountry style. Made of square steel tubing with the shell drum pendant as inspiration. Available in all Lowcountry custom finishes.

Dimensions: 16"W x 60"H

Shade: 16" Shell Drum with Quartz Crystal Nugget Accent

Material: Steel/Shells

Bulb/Wattage: 1/150 3 WAY

Shown In: Gun Metal

Finishes: Our light fixture finishes are designed to be as lively and ever-changing as the Lowcountry landscape itself. Providing depth and character to your custom design, our finishes reflect the unique beauty of the coastal landscape and produce a beautiful, natural patina as they age. Our nature-inspired finishes are truly a living art and not only protect your piece, but create a more beautiful luster with time.



Name: VINTAGE PIPE WORKS FLOOR LAMP

Item Number: LCO-IH-FL

Description: The vintage pipe works floor lamp is a celebration of simple forms and ordinary materials. The floor lamp is made of brass tubing materials in an elegant finish and accented with Edison bulbs and shades.

Dimensions: Base: 12"x 9"; Height 58"

Material: Steel

Bulb/Wattage: 1/60M

Shown In: Brass

Finishes: Our light fixture finishes are designed to be as lively and ever-changing as the Lowcountry landscape itself. Providing depth and character to your custom design, our finishes reflect the unique beauty of the coastal landscape and produce a beautiful, natural patina as they age. Our nature-inspired finishes are truly a living art and not only protect your piece, but create a more beautiful luster with time.



Name: VINTAGE PIPE WORK TABLE LAMP

Item Number: LCO-IH-049-TBL

Description: The Raw Brass Vintage table lamp blends modern with vintage to convert a traditional lamp into a conversational piece. The golden tones of the brass will turn your workspace into a warm and inviting oasis where style meets functionality. Also offered in raw steel and designed to complement the Lowcountry Vintage Pipework chandelier.

Dimensions: 7"W x 19"H

Material: Steel

Bulb/Wattage: 1/60M, Edison Bulb

Shown In: Raw Brass

Finishes: Our light fixture finishes are designed to be as lively and ever-changing as the Lowcountry landscape itself. Providing depth and character to your custom design, our finishes reflect the unique beauty of the coastal landscape and produce a beautiful, natural patina as they age. Our nature-inspired finishes are truly a living art and not only protect your piece, but create a more beautiful luster with time.



Name: PIPE & SHADE FLOOR LAMP

Item Number: LCO-L35-101

Description: The handcrafted Pipe and Shade Floor Lamp is crafted with plumbing parts. It was created to go with the swinging beds on a porch and the handle to turn on the lamp is actually a spigot.

Dimensions: 60" Tall

Shade: 16" DIA Metal Shade

Material: Steel

Bulb/Wattage: 1 3WAY

Shown In: Rustic Bronze

Finishes: Our light fixture finishes are designed to be as lively and ever-changing as the Lowcountry landscape itself. Providing depth and character to your custom design, our finishes reflect the unique beauty of the coastal landscape and produce a beautiful, natural patina as they age. Our nature-inspired finishes are truly a living art and not only protect your piece, but create a more beautiful luster with time.



Name: CAT TAIL LAMP

Item Number: LCO-L35-102

Description: The handcrafted Cat Tail Lamp with gold accents pairs beautifully on a buffet. Shades are available in natural burlap or white burlap. Another opportunity to have an accent piece truly in the Lowcountry style.

Dimensions: 16"W x 36"H

Shade: (15"x8"T) x (6"x12"B) x 36"H

Material: Steel

Bulb/Wattage: 1/150M

Shown In: Darkened Bronze

Finishes: Our light fixture finishes are designed to be as lively and ever-changing as the Lowcountry landscape itself. Providing depth and character to your custom design, our finishes reflect the unique beauty of the coastal landscape and produce a beautiful, natural patina as they age. Our nature-inspired finishes are truly a living art and not only protect your piece, but create a more beautiful luster with time.



Name: SHELL DRUM TABLE LAMP

Item Number: LCO-L35-109

Description: The Shell Drum Table Lamp is a clever combination of square steel tubing and a shell drum pendant as shade. With a sphere finial on top you can accent it in quartz crystal nuggets.

Dimensions: 10"DIA. X 35"H

Shade: Shell Drum Shade

Material: Steel/Shells/Quartz Crystals

Bulb/Wattage: 1/150M

Shown In: Rustic Bronze

Finishes: Our light fixture finishes are designed to be as lively and ever-changing as the Lowcountry landscape itself. Providing depth and character to your custom design, our finishes reflect the unique beauty of the coastal landscape and produce a beautiful, natural patina as they age. Our nature-inspired finishes are truly a living art and not only protect your piece, but create a more beautiful luster with time.



Name: PYRAMID FLOOR LAMP

Item Number: LCO-L35-110

Description: This ornamental floor lamp is shown with an aureate finish in Old Gold with a linen shade. The impressive elongated copper tubing is both sturdy and beautiful.

Dimensions: 12" x 12" Base | 72" Tall

Shade: 18"T x 24"B x 14"H

Material: Raw Steel and Copper

Bulb/Wattage: 1/150M

Shown In: Old Gold

Finishes: Our light fixture finishes are designed to be as lively and ever-changing as the Lowcountry landscape itself. Providing depth and character to your custom design, our finishes reflect the unique beauty of the coastal landscape and produce a beautiful, natural patina as they age. Our nature-inspired finishes are truly a living art and not only protect your piece, but create a more beautiful luster with time.



Name: OYSTER BOX LAMP

Item Number: LCO-L35-OSTRBX

Description: The Oyster Box Lamp with Linen Shade adds character to any design. The rectangular box-like shape makes quite the statement with a bushel of coastal charm.

Dimensions: 22"L x 8"H x 22"H

Shade: (24"x10"T) x (24"x10"B) x 10"H

Material: Steel

Bulb/Wattage: 1/150M

Shown In: Oyster Shell and White

Finishes: Our light fixture finishes are designed to be as lively and ever-changing as the Lowcountry landscape itself. Providing depth and character to your custom design, our finishes reflect the unique beauty of the coastal landscape and produce a beautiful, natural patina as they age. Our nature-inspired finishes are truly a living art and not only protect your piece, but create a more beautiful luster with time.



Name: SHELL CENTER LAMP

Item Number: LCO-L35-SH

Description: The custom lamp with seeded glass and shell center is one of the most versatile table lamps designed by Lowcountry Originals. Designed with beautiful seeded glass panes. Available in all LCO custom finishes.

Dimensions: 8"W x 31"W

Shade: 17"T x 19"B x 10"H

Material: Steel

Bulb/Wattage: 1/150 3 Way

Shown In: Ocean Mist

Finishes: Our light fixture finishes are designed to be as lively and ever-changing as the Lowcountry landscape itself. Providing depth and character to your custom design, our finishes reflect the unique beauty of the coastal landscape and produce a beautiful, natural patina as they age. Our nature-inspired finishes are truly a living art and not only protect your piece, but create a more beautiful luster with time.



Name: KIAWAH LAMP

Item Number: LCO-L35-SEED

Description: The Kiawah Lamp has a handsome hand-forged steel frame with a delicate linen shade. The steel frame can be customized in any LCO finish.

Dimensions: 22"L x 8"Deep x 8 1/2"H

Shade: (24"x10"T) x (24"x10"B) x 10"H

Material: Steel

Bulb/Wattage: 1/MED

Shown In: Sand Dollar

Finishes: Our light fixture finishes are designed to be as lively and ever-changing as the Lowcountry landscape itself. Providing depth and character to your custom design, our finishes reflect the unique beauty of the coastal landscape and produce a beautiful, natural patina as they age. Our nature-inspired finishes are truly a living art and not only protect your piece, but create a more beautiful luster with time.



Name: CANDLELABRA FLOOR LAMP

Item Number: LCO-L38

Description: The handcrafted Candelabra Floor Lamp with Shade was inspired by the original design of the Laurel Bay Chandelier. Beautifully accented with shell and crystal swags make a beautiful statement. Available in all LCO custom color finishes.

Dimensions: 72" Tall

Shade: 24"T x 24"B x 14"H

Material: Steel

Bulb/Wattage: 1/150 3 WAY

Shown In: Silver

Finishes: Our light fixture finishes are designed to be as lively and ever-changing as the Lowcountry landscape itself. Providing depth and character to your custom design, our finishes reflect the unique beauty of the coastal landscape and produce a beautiful, natural patina as they age. Our nature-inspired finishes are truly a living art and not only protect your piece, but create a more beautiful luster with time.

FURNITURE



Name: Original Bed Swing

Item Number: LCO-F10

Description: Our very first-bed swing design. The original bed swing is a true Lowcountry Originals favorite that provides simple lines and luxurious comfort.

Twin Dimensions: 84"L X 44"W OD 76"L X 41"W ID

Hanging Hardware: 4 Point Steel Rod System

Material: Pine, Upcharge for Cypress

Outdoor Mattress and Cover Included: Tempotest Sand 1033/929, 100% Solution Dyed Acrylic Fabric with 6 Year Manufacturer Warranty

Shown In: Birchbark

Finishes: Available in Various Finishes

Weight: 120 lbs



Name: SWINGING DAY BED WITH BACK

Item Number: LCO-F10-BK-TWIN

Description: Our Swinging Day Bed with a slanted back on a two-point hanging system is designed for comfort and movement. The deep seat incline allows you to lounge while enjoying a cool drink with a gentle swaying motion.

Twin Dimensions: OD: 92"L X 44"W, ID: 76"L X 41"W

Hanging Hardware: 2 Point Steel Rod System

Material: Pine, Upcharge for Cypress

Outdoor Mattress and Cover Included: Tempotest Sand 1033/929, 100% Solution Dyed Acrylic Fabric with 6 Year Manufacturer Warranty

Shown In: Driftwood

Finishes: Available in Various Finishes

Weight: 150 lbs



Name: BED SWING WITH SIDES

Item Number: LCO-F10-SD

Description: The Bed Swing with Sides offers another option for relaxing in Lowcountry style. Copper wrapping on the corners gives an overall vintage feel.

Twin Dimensions: OD: 88L x 44W, ID: 76L x 41W

Hanging Hardware: 4 Point Steel Rod System

Material: Pine, Upcharge for Cypress

Outdoor Mattress and Cover Included: Tempotest Sand 1033/929, 100% Solution Dyed Acrylic Fabric with 6 Year Manufacturer Warranty

Shown In: Birchbark

Finishes: Available in Various Finishes

Weight: 140 lbs



Name: HANGING DAY BED WITH "X" DESIGN

Item Number: LCO-F10-XB-TWIN

Description: The Bed Swing with "X" Sides and vertical back allows relaxing in true Lowcountry style. This style dresses very well with decorative pillows and cushions.

Twin Dimensions: OD: 88"L x 44"W, ID: 76"L x 41"W

Hanging Hardware: 4 Point Steel Rod System

Material: Pine, Upcharge for Cypress

Outdoor Mattress and Cover Included: Tempotest Sand 1033/929, 100% Solution Dyed Acrylic Fabric with 6 Year Manufacturer Warranty

Shown In: Honey

Finishes: Available in Various Finishes

Weight: 140 lbs



Name: CHIPPENDALE BED SWING

Item Number: LCO-F10-CD

Description: The Chippendale Bed Swing is an American classic. This timeless swing adds a sophisticated touch to wrap around porches.

Twin Dimensions: OD: 88"L x 44"W, ID: 76"L x 41"W

Hanging Hardware: 4 Point Steel Rod System

Material: Pine, Upcharge for Cypress

Outdoor Mattress and Cover Included: Tempotest Sand 1033/929, 100% Solution Dyed Acrylic Fabric with 6 Year Manufacturer Warranty

Shown In: White Dove

Finishes: Available in Various Finishes

Weight: 150 lbs



Name: SLATTED BED SWING

Item Number: LCO-F10-SLT

Description: The Slatted Bed Swing is an authentic sturdy style for any look. The bed can be found in both indoor and outdoor applications.

Twin Dimensions: OD: 88L x 44W, ID: 76L x 41W

Hanging Hardware: 4 Point Steel Rod System

Material: Pine, Upcharge for Cypress

Outdoor Mattress and Cover Included: Tempotest Sand 1033/929, 100% Solution Dyed Acrylic Fabric with 6 Year Manufacturer Warranty

Shown In: Onyx

Finishes: Available in Various Finishes

Weight: 160 lbs



Name: BED WITH DECORATIVE ARCH

Item Number: LCO-F10-ARCH

Description: The bed swing with the decorative arch is a mixed material style piece with vertical slats as a back. Ideal to be dressed with your favorite cushions and throws. Enjoy the lovely surroundings in this classic bed swing.

Twin Dimensions: OD: 92"L x 44"W, ID: 76"L X 41"W, Arch

Hanging Hardware: 4 Point Steel Rod System

Material: Pine, Upcharge for Cypress

Outdoor Mattress and Cover Included: Tempotest Sand 1033/929, 100% Solution Dyed Acrylic Fabric with 6 Year Manufacturer Warranty

Shown In: White Dove

Finishes: Available in Various Finishes

Weight: 160 lbs



Name: DIAMOND PATTERN BED SWING

Item Number: LCO-F10-DIAM

Description: The argyle pattern of this bed swing suites both a traditional or modern look. This size fits perfectly on almost any front porch or patio.

Twin Dimensions: OD: 88"L x 44"W , ID: 76"L x 41" W

Hanging Hardware: 4 Point Steel Rod System (2 point shown)

Material: Pine, Upcharge for Cypress

Outdoor Mattress and Cover Included: Tempotest Sand 1033/929, 100% Solution Dyed Acrylic Fabric with 6 Year Manufacturer Warranty

Shown In: Naval Blue

Finishes: Available in Various Finishes

Weight: 150 lbs



Name: TETE-A-TETE HANGING DAY BED

Item Number: LCO-F10-TDT

Description: Our tête-à-tête bed swing is the modern take on an American tradition. Designed for style and comfort. This piece is sure to be a topic of conversation for your home.

Twin Dimensions: OD: 88"L x 44"W, ID: 76"L x 41" 24", INSET

Hanging Hardware: 4 Point Steel Rod System

Material: Pine, Upcharge for Cypress

Outdoor Mattress and Cover Included: Tempotest Sand 1033/929, 100% Solution Dyed Acrylic Fabric with 6 Year Manufacturer Warranty

Shown In: Onyx with Raw Steel Inserts

Finishes: Available in Various Finishes

Weight: 150 lbs



Name: LOWCOUNTRY HANGING DAY BED

Item Number: LCO-F10-LOW

Description: Our newest bed swing in the Lowcountry Originals collection. The Southern-style deep seat swing boasts a palmetto leaf design with new beverage holders on each arm. Luxury and comfort at its best. We also have a high country style that fits perfectly in your mountain home getaway.

Twin Dimensions: OD: 92L x 44W, ID: 76L x 41W

Hanging Hardware: 2 Point Steel Rod System

Material: Pine, Upcharge for Cypress

Outdoor Mattress and Cover Included: Tempotest Sand 1033/929, 100% Solution Dyed Acrylic Fabric with 6 Year Manufacturer Warranty

Shown In: Birchbark with Darkened Bronze Inserts

Finishes: Available in Various Finishes

Weight: 150 lbs



Name: HIGH COUNTRY HANGING DAY BED

Item Number: LCO-F10-HIGH

Description: Our newest bed swing in the Lowcountry Originals collection. The piece was inspired by the natural landscape of the Carolina high country. The back inserts are made with an artful twig design and include new beverage holders on each arm. Luxury and comfort at its best.

Twin Dimensions: OD: 92L x 44W ID: 76L x 41W

Hanging Hardware: 2 Point Steel Rod System

Material: Pine, Upcharge for Cypress

Outdoor Mattress and Cover Included: Tempotest Sand 1033/929, 100% Solution Dyed Acrylic Fabric with 6 Year Manufacturer Warranty

Shown In: Birchbark with Darkened Bronze Inserts

Finishes: Available in Various Finishes

Weight: 150 lbs



Name: CONSOLE WITH ZINC INSERTS

Item Number: LCO-F01

Description: The console chest with zinc panels is simply built with accent panels in zinc. An elegant solid piece for either foyer or dining room. Panels can also be inserted in copper.

Dimensions: 72"L x 18"DEEP x 36"H

Material: Poplar with Copper or Zinc inserts

Shown In: White

Finishes: This versatile piece comes in various LCO finishes or you may submit your own stain or paint color.



Name: BUFFET SERVER

Item Number: LCO-F02

Description: The Buffet Server is a handsome handcrafted piece of furniture designed to serve multiple purposes for your home. Open the exquisite solid wood doors with copper and zinc inserts to find three shelves for great storage. Open the exquisite solid wood doors with copper and zinc inserts to find three shelves for great storage.

Dimensions: 78"L x 20"DEEP x 36"H

Material: Poplar with Copper or Zinc inserts

Shown In: White

Finishes: This versatile piece comes in various LCO finishes or you may submit your own stain or paint color.



Name: STACKED WOOD CHEST

Item Number: LCO-F04

Description: The stacked chest is a very unique and functional chest of drawers with natural oyster shell hardware. The piece of furniture is made into three pieces, each stacked on top of the other. Available in your custom size.

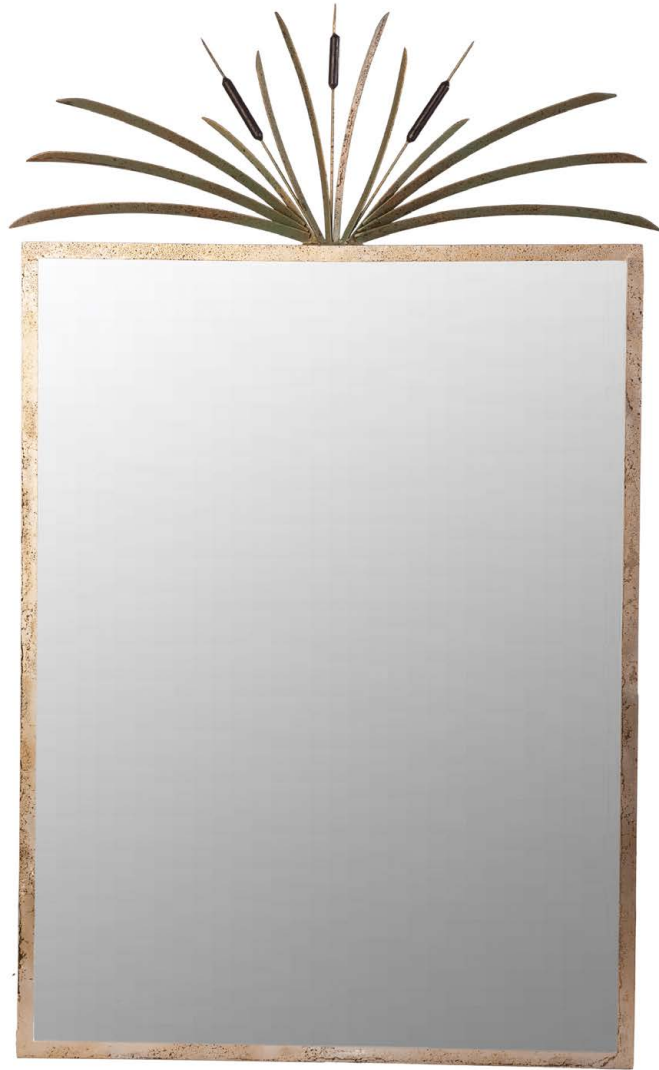
Dimensions: 48"W x 50"H

Material: Poplar with Oysters

Shown In: Driftwood

Finishes: This versatile piece comes in various LCO finishes or you may submit your own stain or paint color.

ACCESSORIES



Name: CAT TAIL MIRROR

Item Number: LCO-M-CATTAIL

Dimensions: 36"W x 62"H

Material: Steel

Shown In: Darkened Bronze with Palmetto
and Antique Platinum

Finishes: Our finishes are designed to be as lively and ever-changing as the Lowcountry landscape itself. Providing depth and character to your custom design, our finishes reflect the unique beauty of the coastal landscape and produce a beautiful, natural patina as they age. Our nature-inspired finishes are truly a living art and not only protect your piece, but create a more beautiful luster with time.



Name: FLAT FIREPLACE SCREEN WITH RIVETS

Item Number: LCO-FS-FLT

Description: The handcrafted Flat Fireplace Screen is simple, rectangular and accented around the perimeter of the screen with rivets. A great looking industrial piece. Because of its simplicity, it works with every fireplace façade over every period of time.

Dimensions: 48"W x 34"H

Material: Steel

Shown In: Rustic Bronze

Finishes: Available in all LCO custom finishes.