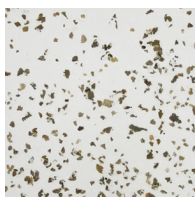
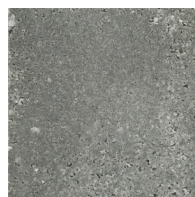


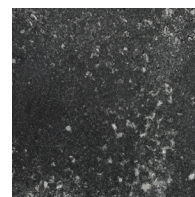
WHITE STONE



NATURAL STONE



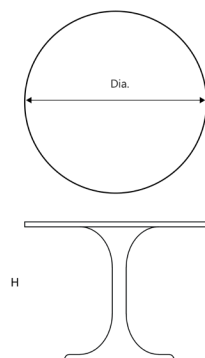
KEY STONE



COAL STONE



AGED STONE



SPINDLE DINING TABLE

An unlikely material takes on an iconic form. Strength and durability with a delicate elegance, made possible by the marriage of stone, resin, and fiberglass.

Fiberglass resin and aggregate.

ZBT208 | 27"Dia. x 30"H - 40 lbs

ZBT208-48 | 48"Dia. x 30"H - 80 lbs